

UNITED STATES PUBLIC LAND SURVEY CORNER CERTIFICATE

OF 14 11  
Land Survey Monuments situated in Section 14, Township 96 NORTH, Range 13 WEST, of the Fifth Principal Meridian, CHICKASAW County, Iowa.  
Previously recorded in (NONE) in County Recorder's Office.  
(book, page, document number, etc.)

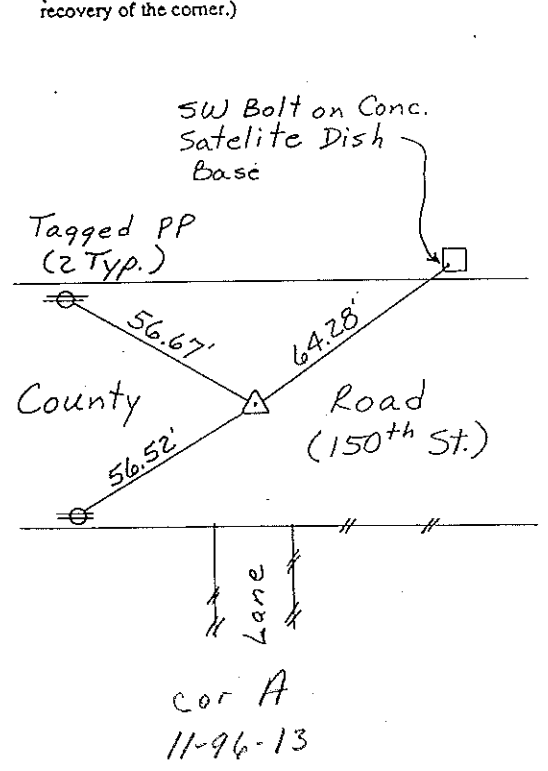
Section 11-96-13  
As referred to in  
Engr. The Book

(Show reason for preparing this certificate, the evidence and detailed procedures used in establishing the corner positions and monumentation found or placed.)

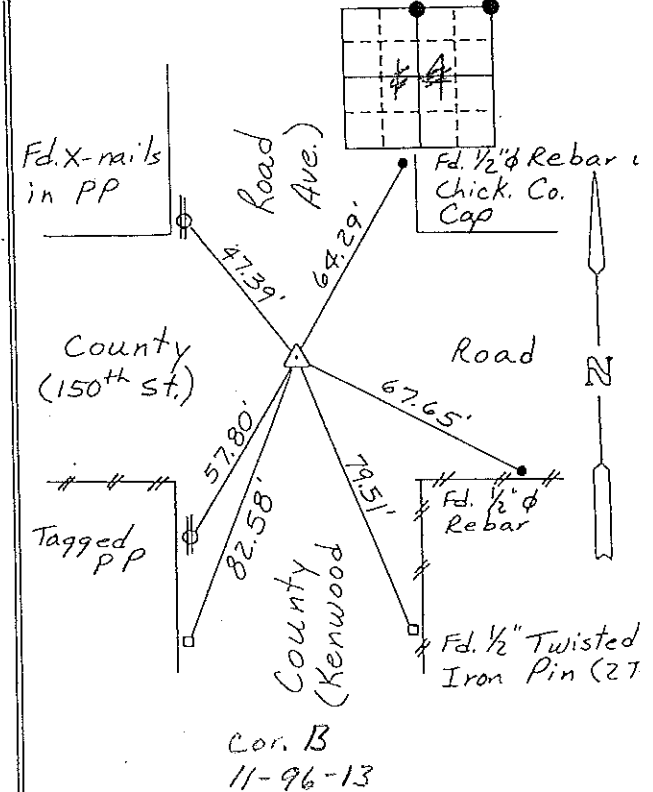
Monument Description and Remarks: N 1/4 CORNER, SECTION 14-T96N-R13W:  
FOUND 3/4" Ø IRON PIPE.  
NE CORNER, SECTION 14-T96N-R13W: FOUND 5/8" Ø IRON PIN.

PLAN - VIEW

(Show a minimum of three reference ties to durable physical objects, relevant monuments and physical conditions that will enable recovery of the corner.)



N 1/4 CORNER, SECTION 14-96-13



NE CORNER, SECTION 14-96-13

I hereby certify that the survey work was completed and this certificate was prepared by me or under my direct personal supervision and that I am a duly registered land surveyor under the laws of the state of Iowa.

Signature: Gary L. Casady  
Name typed or printed: Gary L. Casady

Date: 3-23-93 Reg. No. 12532

My Registration Expires December 31, 1994

Comers	Section	Twp	Range
N 1/4	14	96N	13W
	COR A 11-96-13		
NE	14	96N	13W
	COR B 11-96-13		

SEAL



Placed in the  
book 4/1/93

151-376

"County Engineer's Copy"