

Prepared by & Return to: Harold - Reicks Surveying, 19 East Main Street, New Hampton, IA 50658, Ph. 641-394-2725

UNITED STATES PUBLIC LAND SURVEY CORNER CERTIFICATE

Land Survey Monuments situated in Section 10, Township 96 North, Range 13 West of the Fifth Principal Meridian, Chickasaw County, Iowa. Previously recorded in Document #2008-1784, in the County Recorder's office.

This certificate is being prepared in compliance with Iowa Code Chapter 355.11 because:

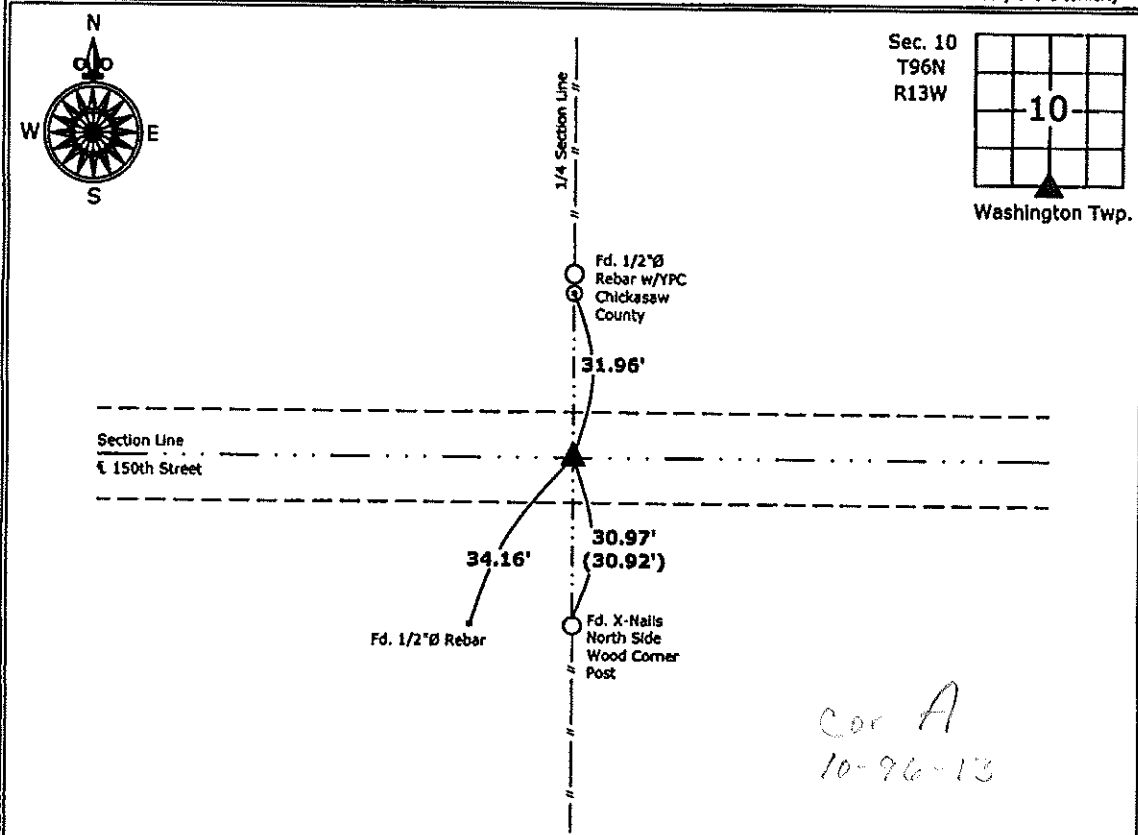
- There is no certificate on file for this corner.
- There are no longer three valid ties of record.
- There are changes to reference ties of record.
- There is change of monumentation of record.
- To clarify description of record monument (ties).

Monument Description and Remarks:

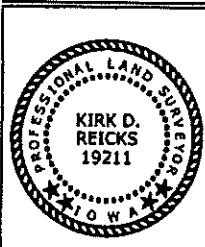
South 1/4 Corner: Found 1/2"Ø rebar w/yellow plastic cap "Chickasaw County" with information obtained from the previous Section Corner Certificate. Updated reference ties of record.

PLAN - VIEW

(Show a minimum of three reference ties to durable physical objects, relevant monuments and physical conditions that will enable recovery of the corner.)



South 1/4 Section 10-96-13
 Found 1/2"Ø rebar w/Yellow Plastic Cap "Chickasaw County"



I hereby certify that this land surveying document was prepared and the related survey work was performed by me or under my direct personal supervision and that I am a duly licensed Land Surveyor under the laws of the State of Iowa.

Kirk D. Reicks 7-15-13
 Kirk D. Reicks Date:

License number 19211
 My license renewal date is December 31, 2014.
 Sheets covered by this seal: Individual sheet only

List Corners to be Indexed			
Corners	Section	Twp.	Range
S 1/4	10	96	13

Project Number: 2012-209
 FB: Chickasaw County 5, Pgs. 7-11

Prepared by & Return to: Harold - Reicks Surveying, 10 East Main Street, New Hampton, IA 50659, Ph. 641-394-2725

UNITED STATES PUBLIC LAND SURVEY CORNER CERTIFICATE

Land Survey Monuments situated in Section 10, Township 96 North, Range 13 West of the Fifth Principal Meridian, Chickasaw County, Iowa. Previously recorded in Document #2008-1784, in the County Recorder's office.

This certificate is being prepared in compliance with Iowa Code Chapter 355.11 because:

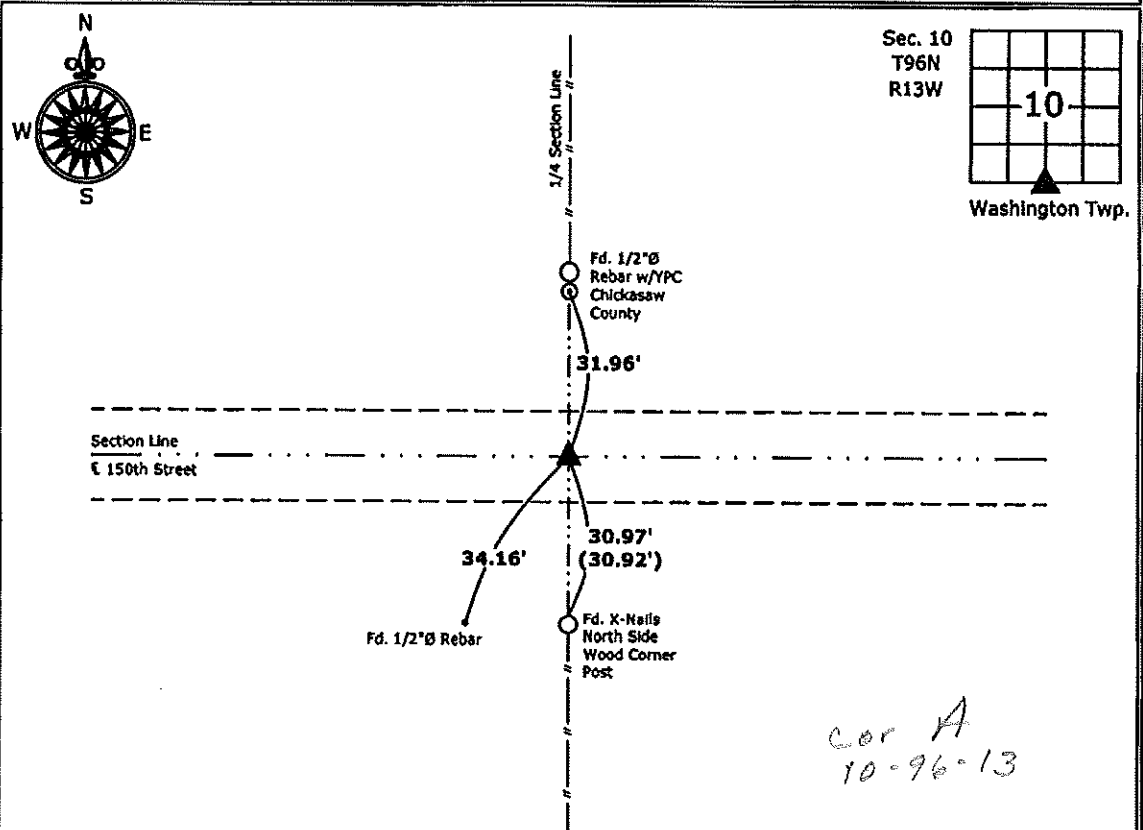
- There is no certificate on file for this corner.
- There are no longer three valid ties of record.
- There are changes to reference ties of record.
- There is change of monumentation of record.
- To clarify description of record monument (ties).

Monument Description and Remarks:

South 1/4 Corner: Found 1/2"Ø rebar w/yellow plastic cap "Chickasaw County" with information obtained from the previous Section Corner Certificate. Updated reference ties of record.

PLAN - VIEW

(Show a minimum of three reference ties to durable physical objects, relevant monuments and physical conditions that will enable recovery of the corner.)



South 1/4 Section 10-96-13
 Found 1/2"Ø rebar w/Yellow Plastic Cap "Chickasaw County"



I hereby certify that this land surveying document was prepared and the related survey work was performed by me or under my direct personal supervision and that I am a duly licensed Land Surveyor under the laws of the State of Iowa.

Kirk D. Reicks 1-7-13
 Kirk D. Reicks Date:

License number 19211
 My license renewal date is December 31, 2014.
 Sheets covered by this seal: Individual sheet only

List Corners to be Indexed			
Corners	Section	Twp.	Range
S 1/4	10	96	13

Project Number: 2012-209
 FB: Chickasaw County 5, Pgs. 7-11

SEP 15 2008

2008-1784

9-16-08 @ 8:36

PREPARED BY: BRIAN J. DIEHL LS 13644 WHKS & CO. 1412 6th ST. S.W. MASON CITY, IOWA 50401 -- (641) 423-8271

UNITED STATES PUBLIC LAND SURVEY CORNER CERTIFICATE

SLST 9-90

Section 10-96-13
As referred to in
Engr. Tie Book

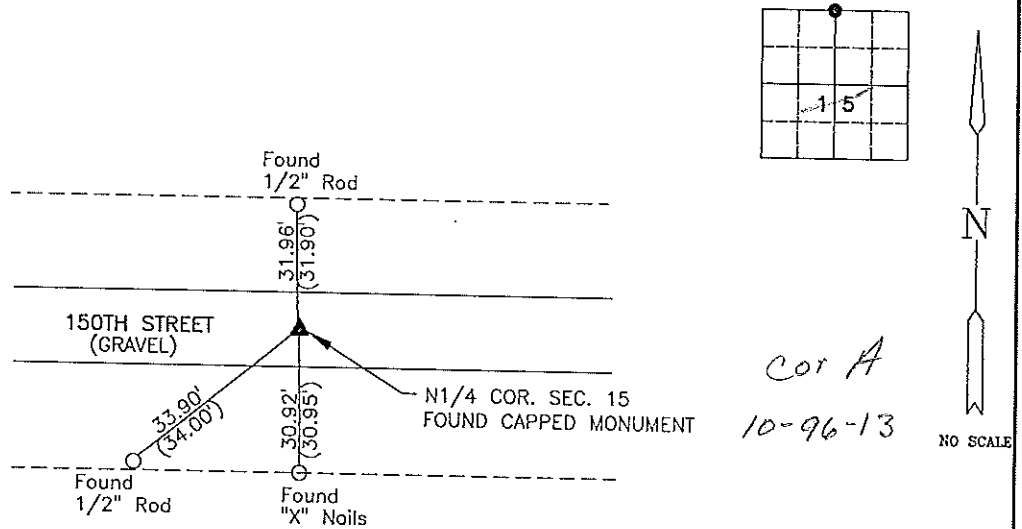
Land Survey Monuments Situated in Section 15 10, Township 96 N, Range 13 W, of the Fifth Principle Meridian, CHICKASAW County, Iowa
Previously Recorded in (NO RECORD) in County Recorder's Office
(book, page, document number, etc.)

(Show reason for preparing this certificate, the evidence and detailed procedures used in establishing the corner positions and monumentation found or placed.)

Monument Description and Remarks: N1/4 COR. - FOUND CAPPED MONUMENT 0.2' DEEP IN CENTERLINE OF GRAVEL ROAD. COUNTY ENGINEER'S RECORD STATES FOUND STONE MIDWAY BETWEEN FENCES. (4-20-36)

PLAN-VIEW

(Show a minimum of three reference ties to durable physical objects, relevant monuments and physical conditions that will enable recovery of the corner.)

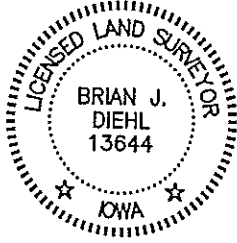


COUNTY ENGINEER'S RECORD.....()

I hereby certify that this land surveying document was prepared and the related survey work was performed by me or under my direct personal supervision and that I am a duly licensed Land Surveyor under the laws of the State of Iowa.

Brian J. Diehl
Brian J. Diehl
September 7, 2008
Date

License number 13644.
My license renewal date is December 31, 2009
Sheets covered by this seal: 1



WHKS & CO.

ENGINEERS PLANNERS LAND SURVEYORS
1412 - 6th STREET S.W. P.O. BOX 1467 MASON CITY, IOWA 50402-1467
641-423-8271

Corners	List Corners To Be Indexed		
	Section	Twp	Range
N1/4 COR.	15	96	13