

PREPARED BY : North Star Land Surveyors LLC, 107 Pine Street, New Hampton, IA 50659, Phone : 641-330-6948

UNITED STATES PUBLIC LAND CORNER CERTIFICATE

OF: 9

Land Survey Monuments situated in Section 15, Township 96 North, Range 13 West of the Fifth Principal Meridian, Chickasaw County, Iowa. Previously recorded in W 1/4 Corner : none previous NW Corner: fee bk 2008-1783, fee bk 2013-0034, & fee bk 2013-1149 in Office of County Recorder.

(book, page, document number, etc.)

(Show reason for preparing this certificate, the evidence and detailed procedures used in establishing the corner positions and monumentation found or placed.)

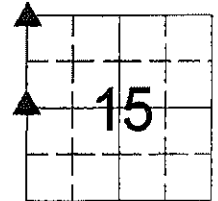
Monument Description and Remarks :

NW Corner: Found 15"x15"x6" stone 15" deep. Found 1/2" diameter pipe 2" deep leaning South. Prominent point of stone was 0.3' North and 0.12' East of top of pipe location. Discarded pipe. Set 1/2" x 12" long rebar with yellow cap embossed 18149 on stone.
 Reason for recording: Modified monumentation.

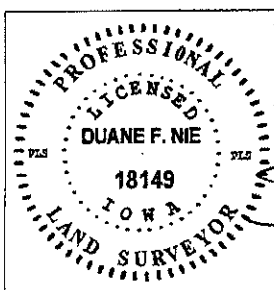
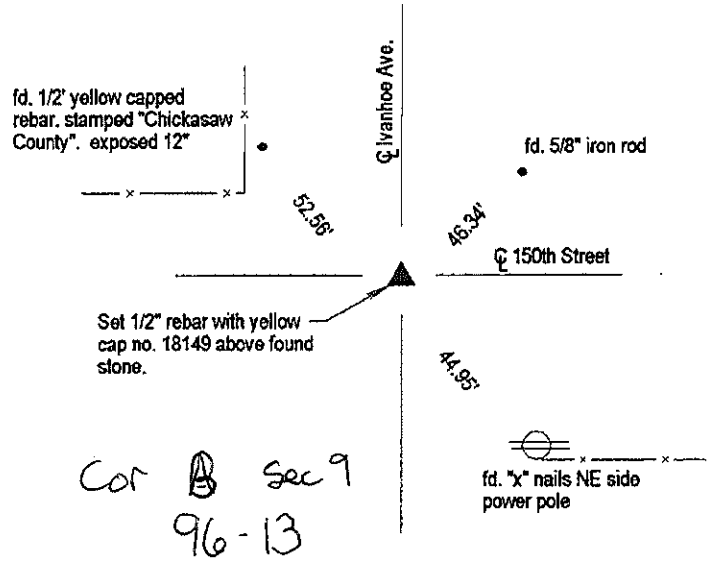
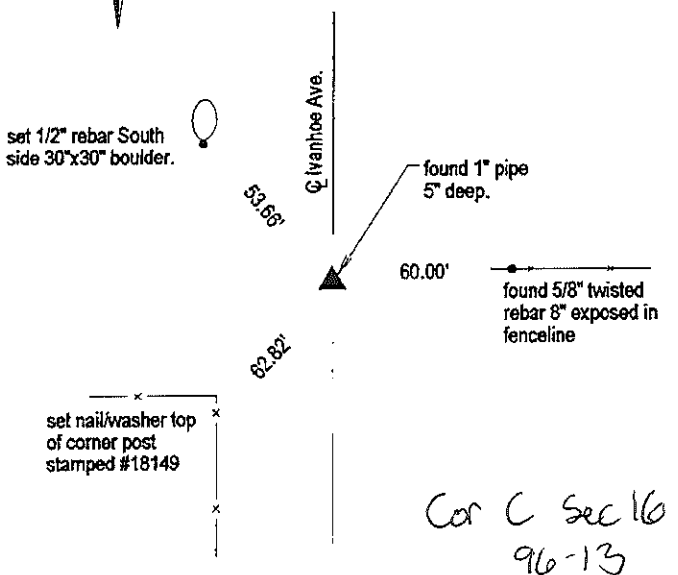
W 1/4 Corner: Found 1" pipe 5" below gravel road surface. Found reference tie East that matches County Engineers' record. Doug 2'x3' hole 18" deep. Probed to depth of 3.5'. No other evidence of corner found. Reason for recording: Did not find certificate on record.

PLAN-VIEW

(Show a minimum of three reference ties to durable physical objects, relevant monuments and physical conditions that will enable recovery of the corner.)



Washington Township



I hereby certify that this land surveying document was prepared and the related survey work was performed by me or under my direct personal supervision and that I am a duly LICENSED LAND SURVEYOR under the laws of the State of IOWA.
 Duane F. Nie License number 18149 Date April 15th 2015
 My license renewal date is December 31, 2016
 Pages or sheets covered by this seal. This page only 19159613

List Corners to be Indexed			
Corner	Section	Township	Range
NW Cor.	15	96	13
W 1/4 Cor.	15	96	13