

PREPARED BY : North Star Land Surveyors LLC, 107 Pine Street, New Hampton, IA 50659, Phone : 641-330-6948

# UNITED STATES PUBLIC LAND CORNER CERTIFICATE

OF: 9

Land Survey Monuments situated in Section 15, Township 96 North, Range 13 West of the Fifth Principal Meridian, Chickasaw County, Iowa. Previously recorded in W 1/4 Corner : none previous NW Corner: fee bk 2008-1783, fee bk 2013-0034, & fee bk 2013-1149 in Office of County Recorder.

(book, page, document number, etc.)

(Show reason for preparing this certificate, the evidence and detailed procedures used in establishing the corner positions and monumentation found or placed.)

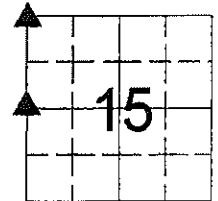
**Monument Description and Remarks :**

NW Corner: Found 15"x15"x6" stone 15" deep. Found 1/2" diameter pipe 2" deep leaning South. Prominent point of stone was 0.3' North and 0.12' East of top of pipe location. Discarded pipe. Set 1/2" x 12" long rebar with yellow cap embossed 18149 on stone.  
 Reason for recording: Modified monumentation.

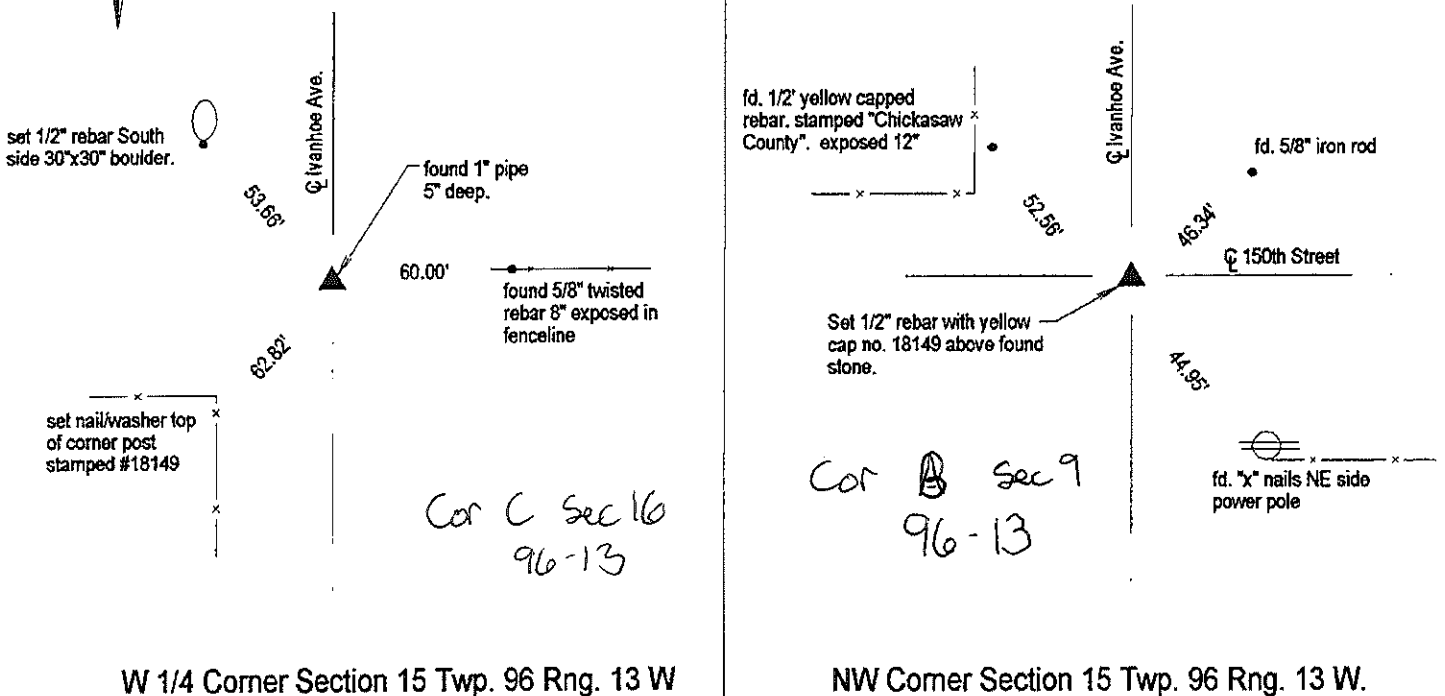
W 1/4 Corner: Found 1" pipe 5" below gravel road surface. Found reference tie East that matches County Engineers' record. Doug 2'x3' hole 18" deep. Probed to depth of 3.5'. No other evidence of corner found. Reason for recording: Did not find certificate on record.

## PLAN-VIEW

(Show a minimum of three reference ties to durable physical objects, relevant monuments and physical conditions that will enable recovery of the corner.)

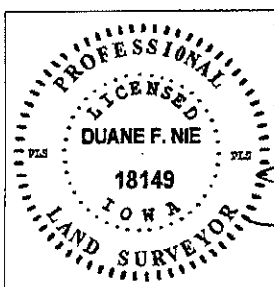


Washington Township



W 1/4 Corner Section 15 Twp. 96 Rng. 13 W

NW Corner Section 15 Twp. 96 Rng. 13 W.



I hereby certify that this land surveying document was prepared and the related survey work was performed by me or under my direct personal supervision and that I am a duly LICENSED LAND SURVEYOR under the laws of the State of IOWA.  
*Duane F. Nie* April 15<sup>th</sup> 2015  
 Duane F. Nie License number 18149 Date  
 My license renewal date is December 31, 2016  
 Pages or sheets covered by this seal. This page only 19159613

List Corners to be Indexed			
Corner	Section	Township	Range
NW Cor.	15	96	13
W 1/4 Cor.	15	96	13

Prepared by & Return to: Harold - Reicks Surveying, 101 East Main Street, New Hampton, IA 50658, Ph. 641-394-2725

### UNITED STATES PUBLIC LAND SURVEY CORNER CERTIFICATE

Land Survey Monuments situated in Section 10, Township 96 North, Range 13 West of the Fifth Principal Meridian, Chickasaw County, Iowa. 1.) Not previously recorded in the County Recorder's office. 2.) Previously recorded in Document #2008-1783, in the County Recorder's office.

This certificate is being prepared in compliance with Iowa Code Chapter 355.11 because:



- 1  There is no certificate on file for this corner.
- There are no longer three valid ties of record.
- There are changes to reference ties of record.
- There is change of monumentation of record.
- 2  To clarify description of record monument (ties).

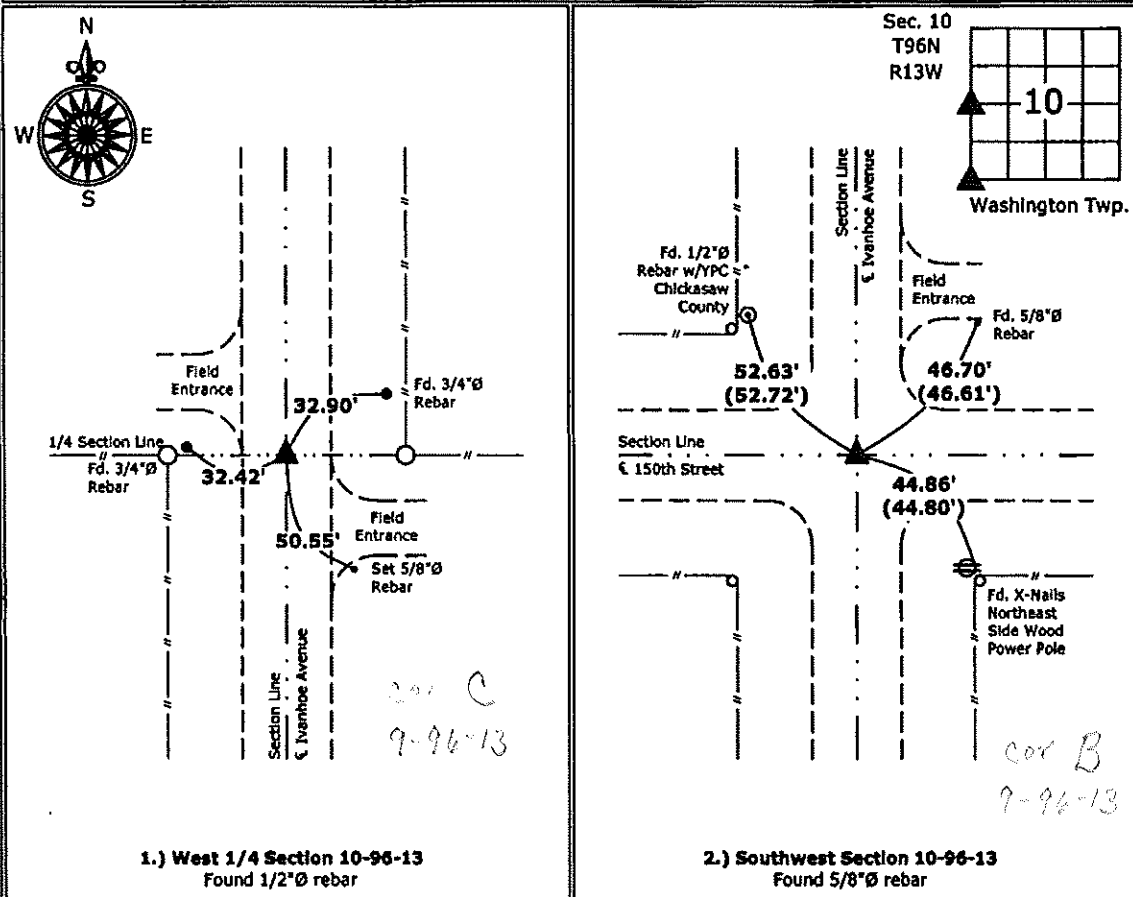
**Monument Description and Remarks:**

**1.) West 1/4 Corner:** Found 1/2"Ø rebar with information obtained from the County Engineer's office in Field Book Washington Twp. Corner Ties, Section 9, Corner "C".

**2.) Southwest Corner:** Found 5/8"Ø rebar with information obtained from the previous Section Corner Certificate. Updated reference ties of record and clarified monument description.

### PLAN - VIEW

(Show a minimum of three reference ties to durable physical objects, relevant monuments and physical conditions that will enable recovery of the corner.)



I hereby certify that this land surveying document was prepared and the related survey work was performed by me or under my direct personal supervision and that I am a duly licensed Land Surveyor under the laws of the State of Iowa.  
*Kirk D. Reicks 7-15-13*  
 Kirk D. Reicks Date:  
 License number 19211  
 My license renewal date is December 31, 2014.  
 Sheets covered by this seal: Individual sheet only

List Corners to be Indexed			
Corners	Section	Twp.	Range
W 1/4	10	96	13
SW	10	96	13

Project Number: 2012-209  
 FB: Chickasaw County 5, Pgs. 7-11

Prepared by & Return to: Harold - Reicks Surveying, 10 East Main Street, New Hampton, IA 50658, Ph. 641-394-2725

### UNITED STATES PUBLIC LAND SURVEY CORNER CERTIFICATE

Land Survey Monuments situated in Section **10**, Township **96 North**, Range **13 West** of the Fifth Principal Meridian, **Chickasaw County, Iowa**. 1.) Not previously recorded in the County Recorder's office. 2.) Previously recorded in Document #2008-1783, in the County Recorder's office.

This certificate is being prepared in compliance with Iowa Code Chapter 355.11 because:

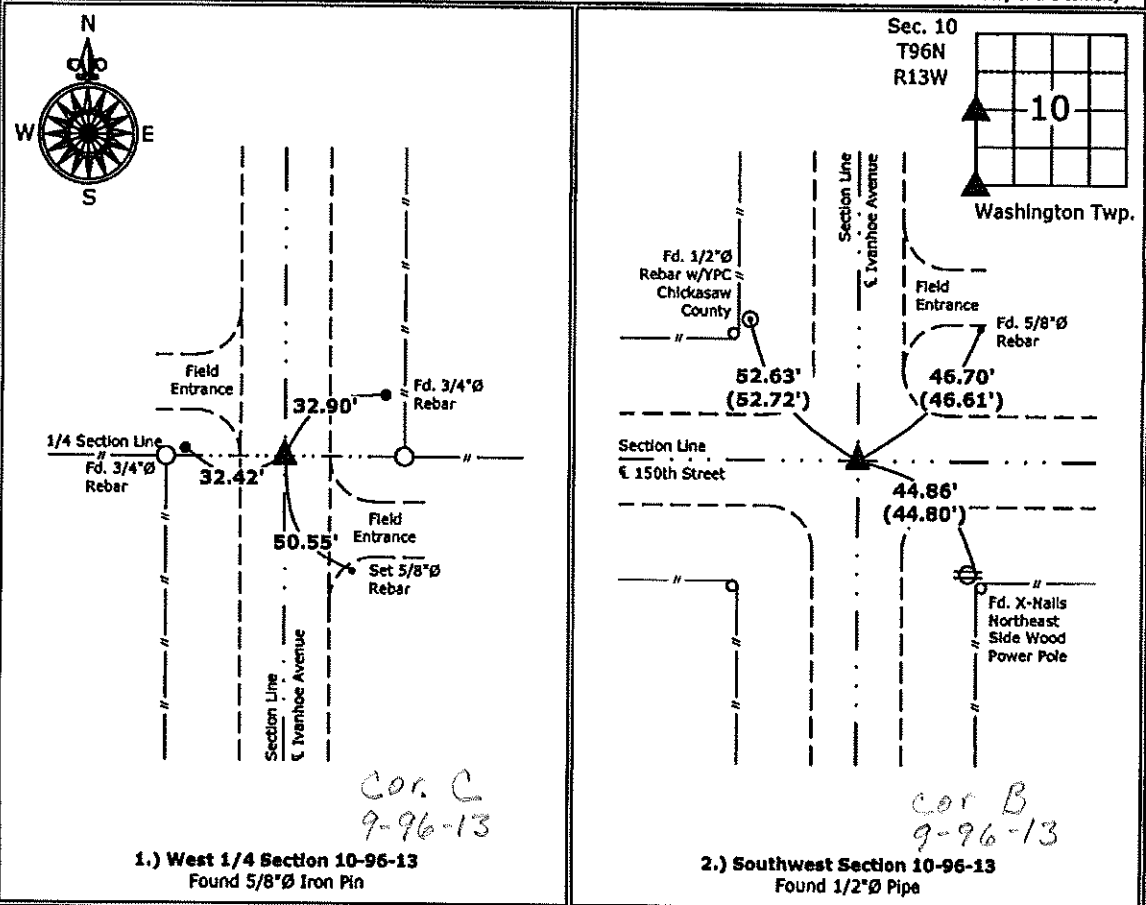
- 1  There is no certificate on file for this corner.
- There are no longer three valid ties of record.
- There are changes to reference ties of record.
- There is change of monumentation of record.
- 2  To clarify description of record monument (ties).

**Monument Description and Remarks:**

- 1.) **West 1/4 Corner:** Found 5/8"Ø Iron pin with information obtained from the County Engineer's office in Field Book Washington Twp. Corner Ties, Section 9, Corner "C".
- 2.) **Southwest Corner:** Found 1/2"Ø pipe with information obtained from previous Section Corner Certificate. Updated reference ties of record and clarified monument description.

#### PLAN - VIEW

(Show a minimum of three reference ties to durable physical objects, relevant monuments and physical conditions that will enable recovery of the corner.)



I hereby certify that this land surveying document was prepared and the related survey work was performed by me or under my direct personal supervision and that I am a duly licensed Land Surveyor under the laws of the State of Iowa.  
*Kirk D. Reicks 1-7-13*  
 Kirk D. Reicks Date:  
 License number 19211  
 My license renewal date is December 31, 2014.  
 Sheets covered by this seal: Individual sheet only

List Corners to be Indexed			
Corners	Section	Twp.	Range
W 1/4	10	96	13
SW	10	96	13

Project Number: 2012-209  
 FB: Chickasaw County 5, Pgs. 7-11

Section 9-96-13  
 As referred to in  
 Engr. Tric Book

SEP 15 2003  
 2008-1783  
 9-16-08 @ 8:34

PREPARED BY: BRIAN J. DIEHL LS 13644 WHKS & CO. 1412 6th ST. S.W. MASON CITY, IOWA 50401 -- (641) 423-8271

UNITED STATES PUBLIC LAND SURVEY CORNER CERTIFICATE

SLSI 9-90

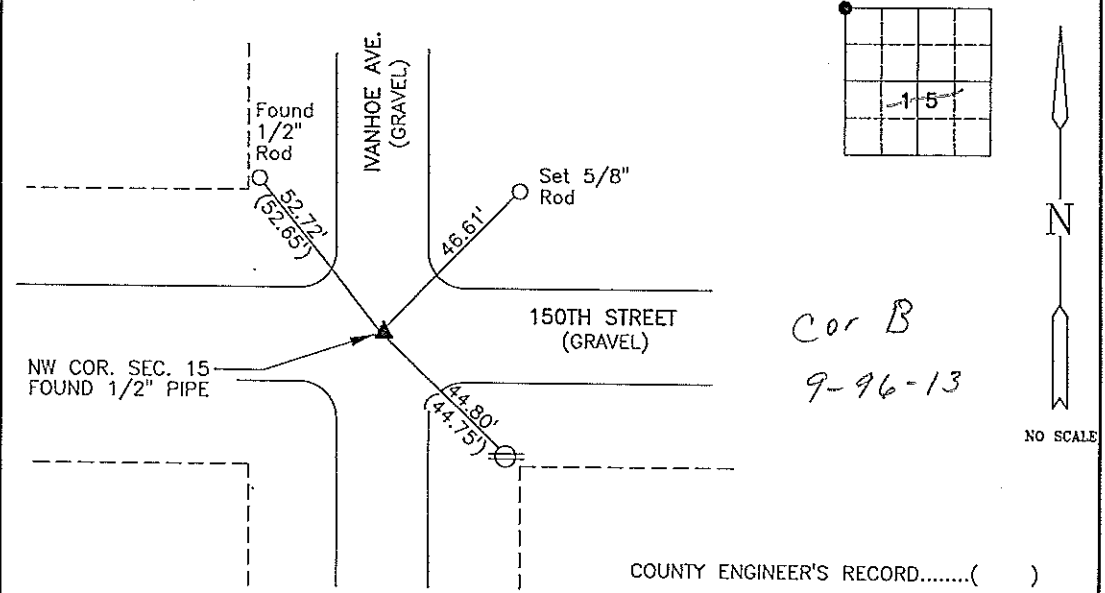
Land Survey Monuments Situated in Section 15 9, Township 96 N, Range 13 W, of the Fifth Principle Meridian, CHICKASAW County, Iowa  
 Previously Recorded in (NO RECORD) in County Recorder's Office  
(book, page, document number, etc.)

(Show reason for preparing this certificate, the evidence and detailed procedures used in establishing the corner positions and monumentation found or placed.)

Monument Description and Remarks: NW COR. - FOUND 1/2" PIPE 0.3' DEEP  
IN GRAVEL ROAD AT INTERSECTION. COUNTY ENGINEER'S RECORD STATES STONE  
WITH BENT IRON PIN. RESET I.P. ON TOP OF STONE MAY 31, 1960, FOUND  
IRON PIN. (10-20-05)

PLAN-VIEW

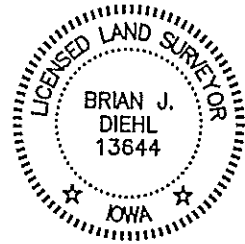
(Show a minimum of three reference ties to durable physical objects, relevant monuments and physical conditions that will enable recovery of the corner.)



I hereby certify that this land surveying document was prepared and the related survey work was performed by me or under my direct personal supervision and that I am a duly licensed Land Surveyor under the laws of the State of Iowa.

*[Signature]*  
 Brian J. Diehl  
 Date September 2, 2008

License number 13644.  
 My license renewal date is December 31, 2009  
 Sheets covered by this seal: 1



WHKS & CO.  
 ENGINEERS PLANNERS LAND SURVEYORS

Corners	List Corners To Be Indexed		
	Section	Twp	Range
NW COR.	15	96	13

1412 - 6th STREET S.W. P.O. BOX 1467 MASON CITY, IOWA 50402-1467  
 641-423-8271