

UNITED STATES PUBLIC LAND SURVEY CORNER CERTIFICATE

OF

Land Survey Monuments situated in Section 17, Township 26, Range 13, of the Fifth Principal Meridian, CHICKASAW County, Iowa. Previously recorded in _____ in County Recorder's Office.

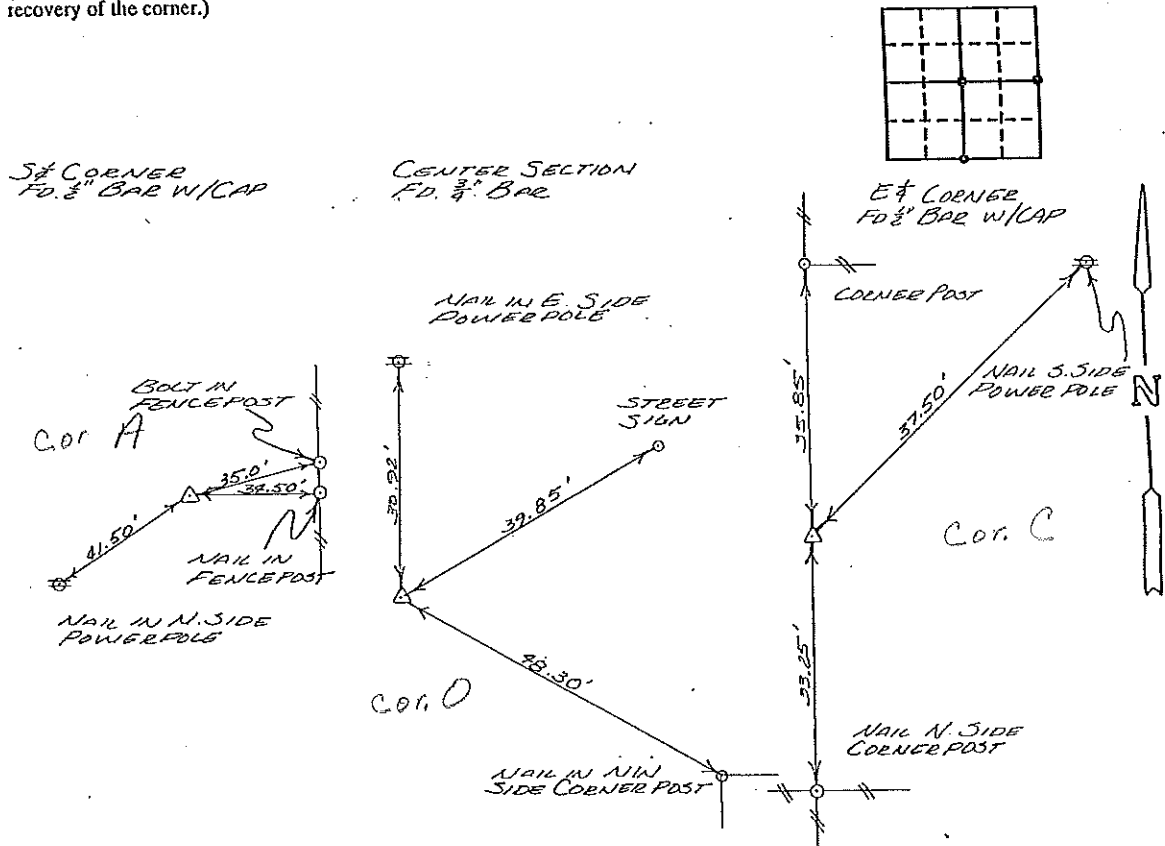
(book, page, document number, etc.)

(Show reason for preparing this certificate, the evidence and detailed procedures used in establishing the corner positions and monumentation found or placed.)

Monument Description and Remarks: _____

PLAN - VIEW

(Show a minimum of three reference ties to durable physical objects, relevant monuments and physical conditions that will enable recovery of the corner.)



I hereby certify that the survey work was completed and this certificate was prepared by me or under my direct personal supervision and that I am a duly registered land surveyor under the laws of the state of Iowa.

Signature: L.P. Erdman
Name typed or printed: L.P. ERDMAN
Date: 12-02-92 Reg. No. 2886

✓ Corners	List Corners to be Indexed Section	Twp	Range	
✓ SW	17	26	13	A 17-96-13
✓ CS	17	26	13	O 17-96-13
✓ SE	17	26	13	C 17-196-13

SEAL



Placed in tie book 2/22/93