

UNITED STATES PUBLIC LAND SURVEY CORNER CERTIFICATE

OF

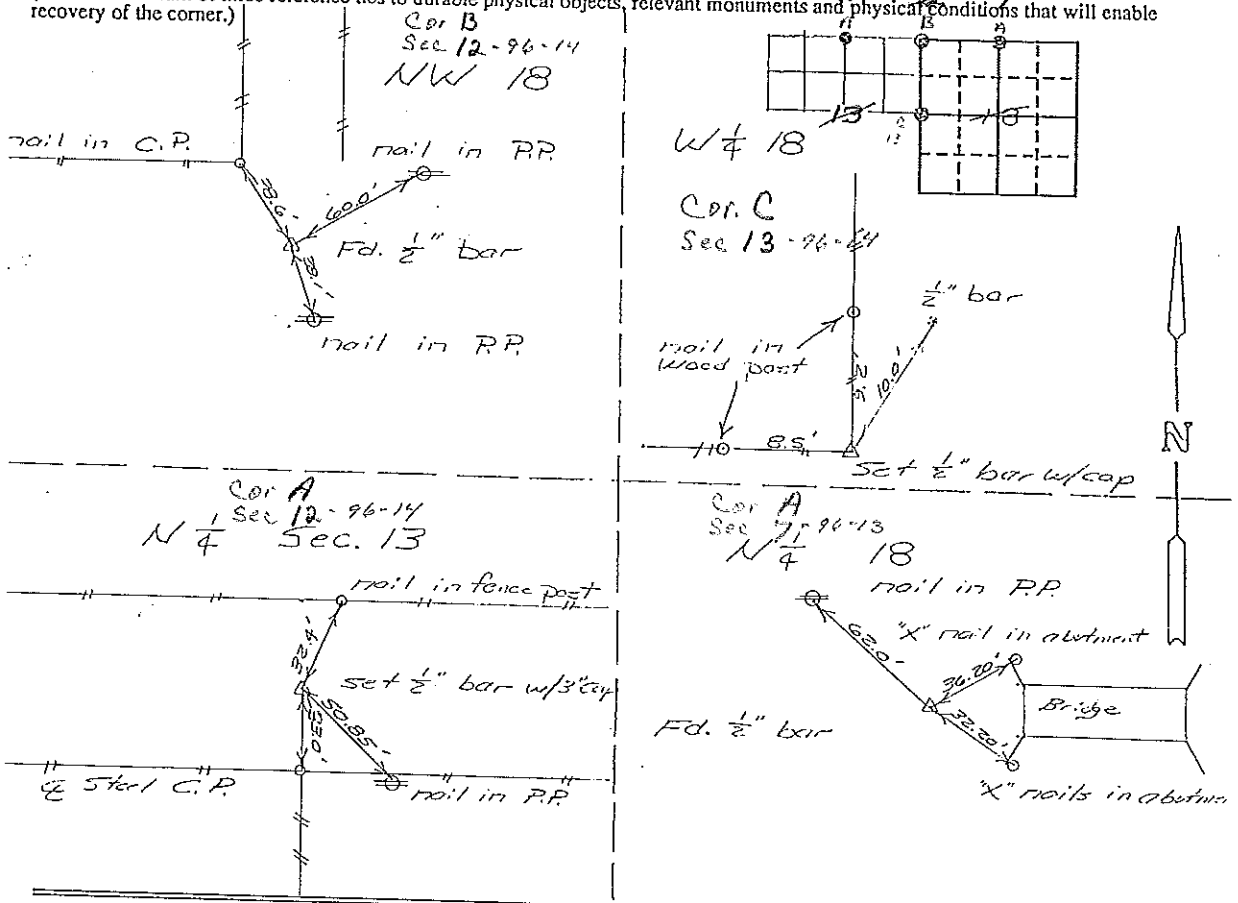
Land Survey Monuments situated in Section 18 ⁷, Township 96N, Range 13W, of the Fifth Principal Meridian, CHICKASAW County, Iowa. Previously recorded in Does not apply in County Recorder's Office.

(Show reason for preparing this certificate, the evidence and detailed procedures used in establishing the corner positions and monumentation found or placed.)
Monument Description and Remarks: also NW Cor Sec 13-T96N-R14W

Section 7-96-13 is referred to in ngr. Tie Book

PLAN - VIEW

(Show a minimum of three reference ties to durable physical objects, relevant monuments and physical conditions that will enable recovery of the corner.)



I hereby certify that the survey work was completed and this certificate was prepared by me or under my direct personal supervision and that I am a duly registered land surveyor under the laws of the state of Iowa.

Signature: L. P. Erdman
Name typed or printed: L. P. Erdman
Date: 7-14-92 Reg. No. 2886

Corners	Section	Twp	Range
N 1/4	18	96N	13W
NW 1/4	18	96N	13W
W 1/4	18	96N	13W
N 1/4	13	96N	14W

SEAL

