

Section 18-96-13
As referred to in
Engr. Tie Book

Chickasaw Co. Recorder
Cindy Messersmith
Fee Book 2008-2121
11/05/2008 @1053AM
SCC SEC COR CERT
Book: Page: # Pages: 1
Total Fees: \$7.00

Herold - Recks Surveying, 25 1/2 East Main Street, Suite 204, New Hampton, IA 50659, Ph. 515-394-2725

UNITED STATES PUBLIC LAND SURVEY CORNER CERTIFICATE

Land Survey Monuments situated in Section ¹⁸20, Township 96 North, Range 13 West of the Fifth Principal Meridian, Chickasaw County, Iowa. Previously not recorded in the Chickasaw County Recorder's office.

This certificate is being prepared in compliance with Iowa Code Chapter 355.11 because:

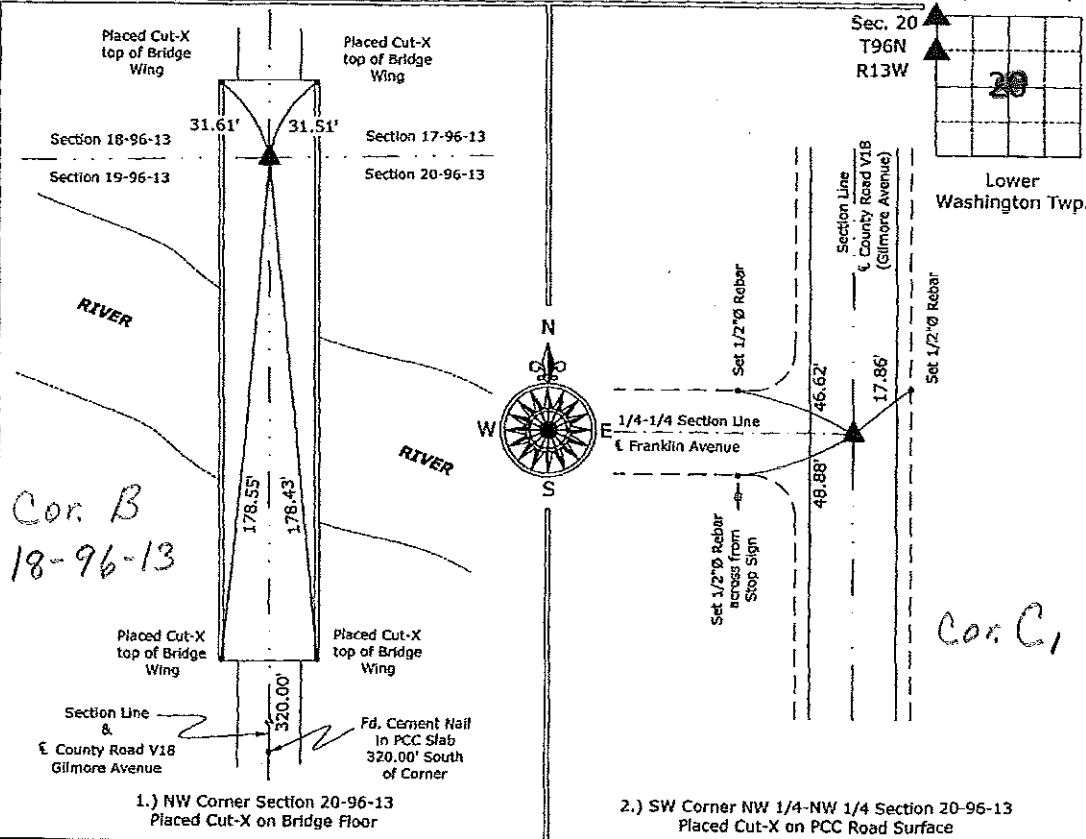
- 1.) & 2.) There is no certificate on file for this corner.
 There are no longer three valid ties of record.
 There are changes to reference ties of record.
 There is change of monumentation of record.
 To clarify description of record monument (ties).

Monument Description and Remarks:

- 1.) NW Corner Section 20-96-13: Placed Cut-X on Bridge Floor by extending a Line the record distance (2672.50') from the W 1/4 Corner through a Fd. Nail established by the Chickasaw County Engineer's Office prior to the bridge construction.
- 2.) SW Corner NW 1/4-NW 1/4 Section 20-96-13: Placed Cut-X on PCC Road Surface equidistant and on Line between the W 1/4 Corner and the NW Corner.

PLAN - VIEW

(Show a minimum of three reference ties to durable physical objects, relevant monuments and physical conditions that will enable recovery of the corner.)



1.) NW Corner Section 20-96-13
Placed Cut-X on Bridge Floor

2.) SW Corner NW 1/4-NW 1/4 Section 20-96-13
Placed Cut-X on PCC Road Surface



I hereby certify that this land surveying document was prepared and the related survey work was performed by me or under my direct personal supervision and that I am a duly licensed Land Surveyor under the laws of the State of Iowa.

Paul R. Herold 11-5-08
Paul R. Herold Date:
License number 15525
My license renewal date is December 31, 2008.
Sheets covered by this seal: Individual sheet only

List Corners to be Indexed			
Corners	Section	Twp.	Range
NW	20	96	13
SW-NW-NW	20	96	13

Project Number: 2008-114

FB: North Washington 1, Pgs. 1-3

File: S:\Projects\2008\2008-114.dwg [2008-114.dwg], 11/5/2008 08:36:26