

Section 19-96-13  
 As referred to in  
 Engr. Trc Book.

Chickasaw Co. Recorder  
 Cindy Messersmith  
**Fee Book 2007-1452**  
 07/13/2007 @0132PM  
 SCC SEC COR CERT  
 Book: Page: # Pages: 1  
 Total Fees: \$7.00

PREPARED BY: North Star Land Surveyors, 107 Pine Street, New Hampton, IA 50659, Phone : 641-394-3449

**UNITED STATES PUBLIC LAND CORNER CERTIFICATE**

OF: 19

Land Survey Monuments situated in Section 20, Township 96 North, Range 13 West  
 of the Fifth Principal Meridian, Chickasaw County, Iowa. Previously recorded in  
none in Office of County Recorder.

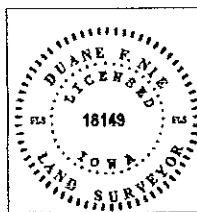
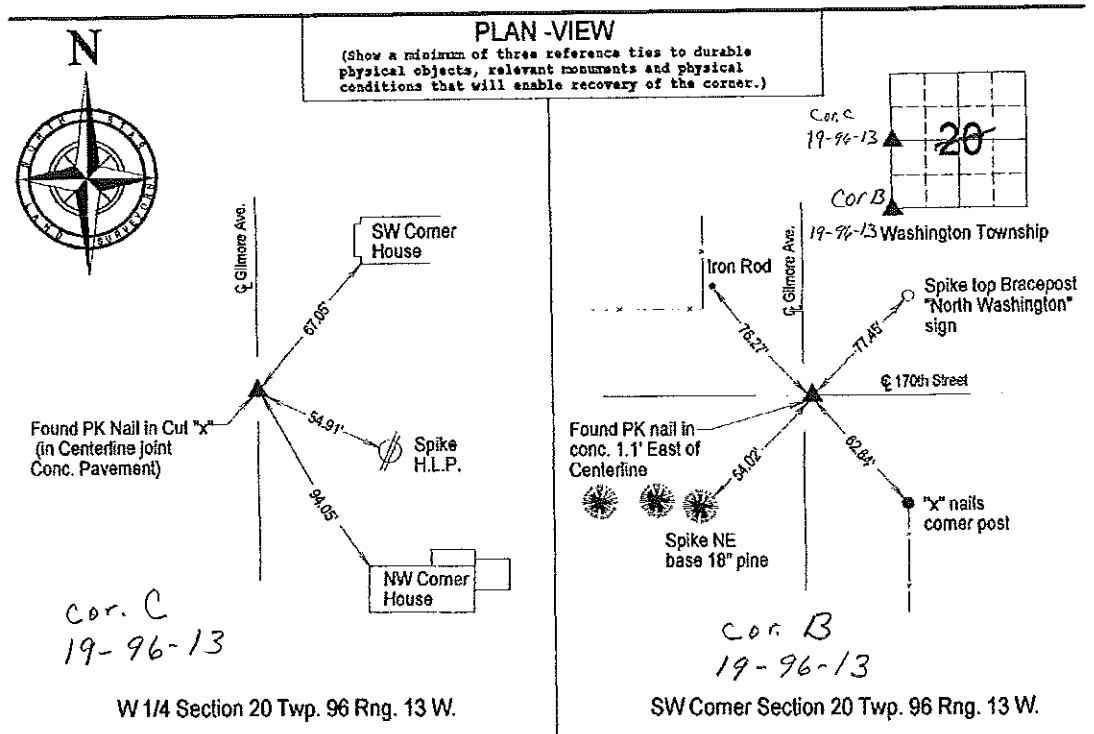
(book, page, document number, etc.)

(Show reason for preparing this certificate, the evidence and detailed procedures used in establishing the corner positions and monumentation found or placed.)

**Monument Description and Remarks :**

W 1/4 Section 20 Twp. 96 Rng. 13 W. : Found PK nail in cut "x". Measurement to houses match reference ties in County Engineer's fieldbook. New distance to Spike in H.L.P.

SW Corner Section 20 Twp. 96 Rng. 13 W. : Found PK nail in Conc. Pavement per County Engineer's fieldbook. Set new tie in top "North Washington" sign bracepost.



I hereby certify that this land surveying document was prepared and the related survey work was performed by me or under my direct personal supervision and that I am a duly LICENSED LAND SURVEYOR under the laws of the State of IOWA.  
 Duane F. Nie July 11, 2007  
 License number 18149  
 My license renewal date is December 31, 2008  
 Pages or sheets covered by this seal. This page only

List Corners to be Indexed

Corner	Section	Township	Range
W 1/4	20	96	13
SW	20	96	13