

UNITED STATES PUBLIC LAND SURVEY CORNER CERTIFICATE

OF

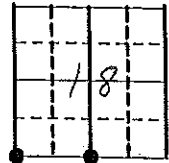
Land Survey Monuments situated in Section 18, Township 96 N, Range 13 W, of the Fifth Principal Meridian, _____ County, Iowa.
Previously recorded in _____ in County Recorder's Office.

(book, page, document number, etc.)
(Show reason for preparing this certificate, the evidence and detailed procedures used in establishing the corner positions and monumentation found or placed.)

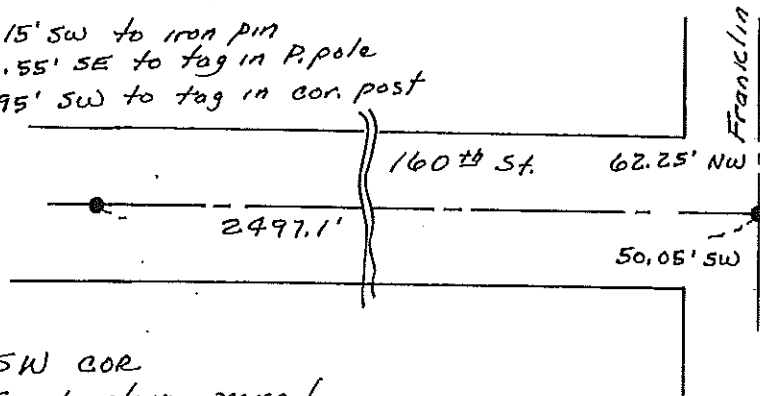
Monument Description and Remarks: Found corners as listed below.

PLAN - VIEW

(Show a minimum of three reference ties to durable physical objects, relevant monuments and physical conditions that will enable recovery of the corner.)



47.15' SW to iron pin
34.55' SE to tag in P. pole
36.95' SW to tag in cor. post



SW COR
Found stone - raised
with 1/2" rebar/cap #9018

Cor. B
13-96-14

S 1/4 COR.
Fd. 1" gas pipe
All ties to iron pins

I hereby certify that the survey work was completed and this land surveying document was prepared by me or under my direct personal supervision and that I am a duly registered land surveyor under the laws of the state of Iowa

Signature: Steve Busse
Name typed or printed: STEVE BUSSE

Date: 6/17/96 Reg. No. 9018

My registration renewal date is December 31, 1996

SEAL

Corners	List Corners to be Indexed	Section	Twp	Range	COF
SW	18	96	13	} 13-96	B
SE	13	96	14		
S 1/4	18	96	13	} 13-96	A
N 1/4	19	96	13		

Placed in Tie Book
6/27/96