

Section 17-96-13  
As referred to in  
Engr. Tie Book

Chickasaw Co. Recorder  
Cindy Messersmith  
Fee Book 2008-2122  
11/05/2008 @1054AM  
SCC SEC COR CERT # Pages: 1  
Book: Page: \$7.00  
Total Fees:

Herold - Rocks Surveying, 25 1/2 East Main Street, Suite 204, New Hampton, IA 50659, Ph. 641-394-2725

UNITED STATES PUBLIC LAND SURVEY CORNER CERTIFICATE

Land Survey Monuments situated in Section <sup>17</sup> 20, Township 96 North, Range 13 West of the Fifth Principal Meridian, Chickasaw County, Iowa. Previously recorded in 1.) Bk. 151, Pg. 183 in the Chickasaw County Recorder's office, 2.) Previously not Recorded.

This certificate is being prepared in compliance with Iowa Code Chapter 355.11 because:

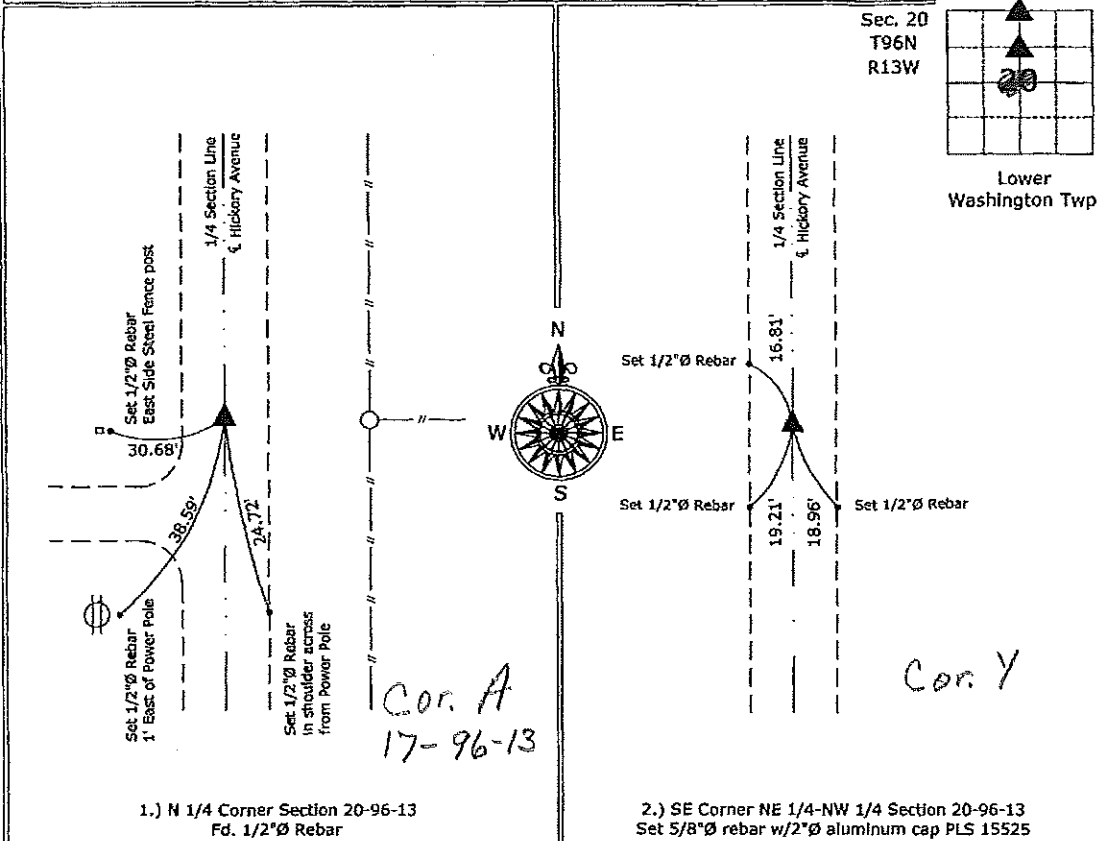
- 2.  There is no certificate on file for this corner.
- 1.  There are no longer three valid ties of record.
- 1.  There are changes to reference ties of record.
- 1.  There is change of monumentation of record.
- 1.  To clarify description of record monument (ties).

Monument Description and Remarks:

- 1.) N 1/4 Corner Section 20-96-13: Fd. 1/2"Ø rebar from information on the previous Section Corner certificate, previous information indicated a 1/2"Ø bar w/Cap, the cap is missing as well as all of the ties, set 3 ties to update the Corner.
- 2.) SE Corner NE 1/4-NW 1/4 Section 20-96-13: Set 5/8"Ø rebar w/2"Ø aluminum cap PLS 15525 equidistant and on line between the N 1/4 Corner and the Center of Section, there is no record of the perpetuation of a monument at this Corner position.

PLAN - VIEW

(Show a minimum of three reference ties to durable physical objects, relevant monuments and physical conditions that will enable recovery of the corner.)



I hereby certify that this land surveying document was prepared and the related survey work was performed by me or under my direct personal supervision and that I am a duly licensed Land Surveyor under the laws of the State of Iowa.  
*Paul R. Herold* 11-5-08  
Paul R. Herold Date:  
License number 15525  
My license renewal date is December 31, 2008.  
Sheets covered by this seal: Individual sheet only

List Corners to be Indexed			
Corners	Section	Twp.	Range
N 1/4	20	96	13
SE-NE-NW	20	96	13
Project Number: 2008-114			
FB: North Washington 1, Pgs. 1-3			

File: S:\\_Projects\2008-114\dwg\2008-114.dwg, 11/5/2008 08:36:09

# UNITED STATES PUBLIC LAND SURVEY CORNER CERTIFICATE

OF

Land Survey Monuments situated in Section 17, Township 96, Range 13, of the Fifth Principal Meridian, CHICKASAW County, Iowa. Previously recorded in \_\_\_\_\_ in County Recorder's Office.

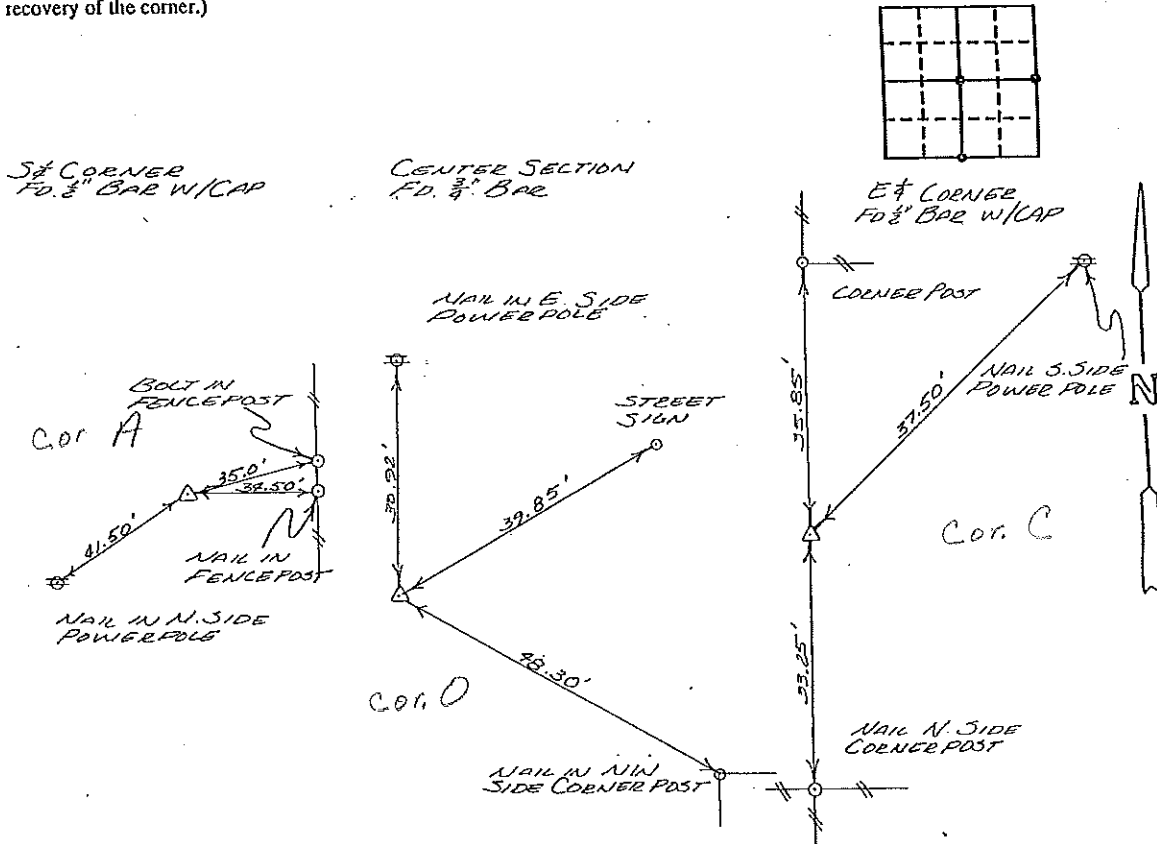
(book, page, document number, etc.)

(Show reason for preparing this certificate, the evidence and detailed procedures used in establishing the corner positions and monumentation found or placed.)

Monument Description and Remarks: \_\_\_\_\_  
\_\_\_\_\_  
\_\_\_\_\_  
\_\_\_\_\_

## PLAN - VIEW

(Show a minimum of three reference ties to durable physical objects, relevant monuments and physical conditions that will enable recovery of the corner.)



I hereby certify that the survey work was completed and this certificate was prepared by me or under my direct personal supervision and that I am a duly registered land surveyor under the laws of the state of Iowa.

Signature: L.P. Erdman

Name typed or printed: L.P. ERDMAN

Date: 12-02-92 Reg. No. 2886

✓ Corners	List Corners to be Indexed Section	Twp	Range	
✓ 3/4	17	96	13	A 17-96-13
✓ CS	17	96	13	O 17-96-13
✓ EA	17	96	13	C 17-196-13

SEAL



*Placed in the book 2/22/93*