

Sec. 24-96-13  
As referred to in  
Engr. Tie Book

Chickasaw Co. Recorder  
Cindy Messersmith  
Fee Book 2008-1224  
06/20/2008 @0115PM  
SCC SEC COR CERT  
Book: Page: # Pages: 1  
Total Fees: \$7.00

Herold - Recks Surveying, 25 1/2 East Main Street, Suite 204, New Hampton, IA 50659, Ph. 641-394-2725

UNITED STATES PUBLIC LAND SURVEY CORNER CERTIFICATE

Land Survey Monuments situated in Section 23, Township 96 North, Range 13 West of the Fifth Principal Meridian, Chickasaw County, Iowa. Previously recorded in 1) Bk. 154, Pg. 497, 2) Bk. 162, Pg. 378 in the County Recorder's office.

This certificate is being prepared in accordance with Iowa Code Chapter 355.11 because:

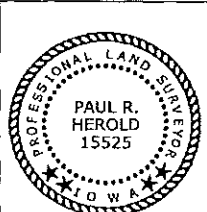
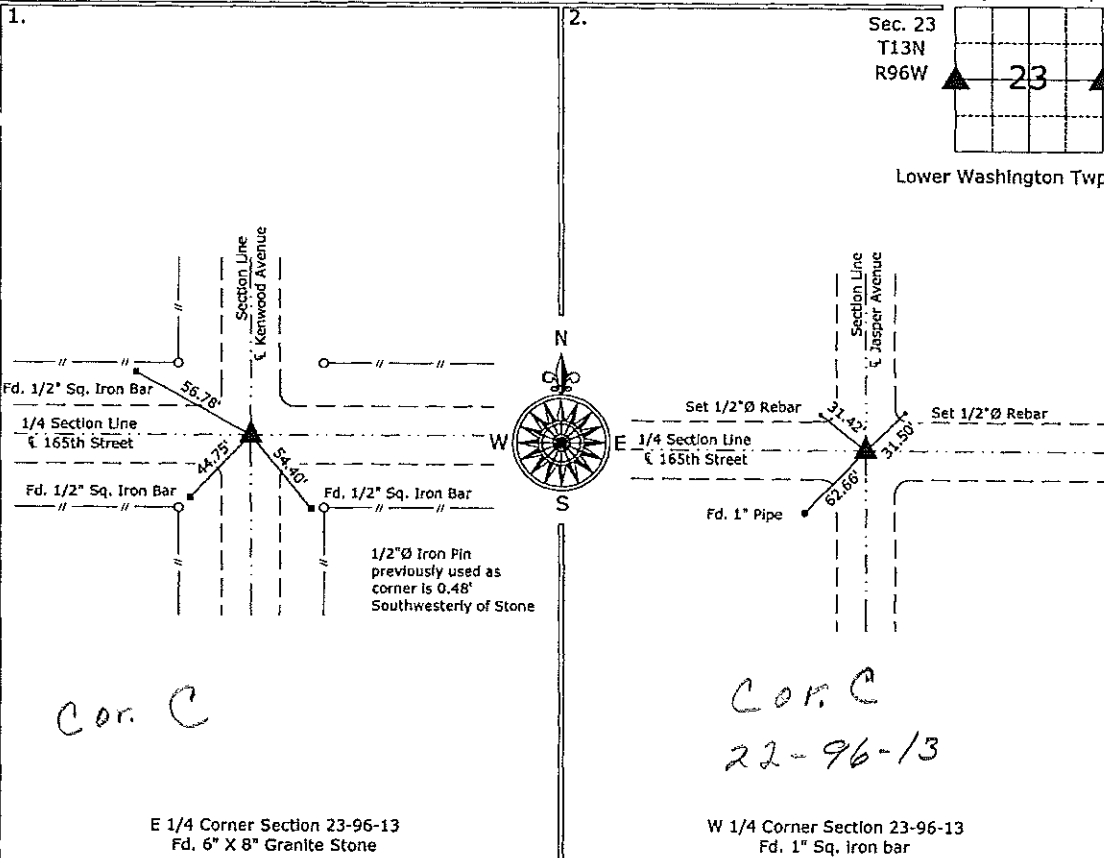
- There is no certificate on file for this corner.
- There are no longer three valid ties of record.
- There are changes to reference ties of record.
- There is change of monumentation of record.
- To clarify description of record monument (ties).

Monument Description and Remarks:

- 1.) E 1/4 Corner - Fd. 6" X 8" Granite Stone from information obtained from the County Engineer's office in Book "Surveyor's Record". Also located 1/2"Ø iron pin previously used as the corner. This pin is in fact a reference tie.
- 2.) W 1/4 Corner - Fd. 1" Sq. iron bar from previous corner certificate. Only 1 tie remained, added 2 ties to update the corner.

PLAN - VIEW

(Show a minimum of three reference ties to durable physical objects, relevant monuments and physical conditions that will enable recovery of the corner.)



I hereby certify that this land surveying document was prepared and the related survey work was performed by me or under my direct personal supervision and that I am a duly licensed Land Surveyor under the laws of the State of Iowa.

*Paul R. Herold* 6-20-08  
Paul R. Herold Date:  
License number 15525  
My license renewal date is December 31, 2008.  
Sheets covered by this seal: Individual sheet only

List Corners to be Indexed			
Corners	Section	Twp.	Range
E 1/4	23	13	96
W 1/4	23	13	96

Project Number: 2008-060  
FB: Chickasaw County 1, Pg. 72

File: S:\Projects\2008\2008-060\dwg\2008-060.dwg, 6/20/2008 09:26:17

UNITED STATES PUBLIC LAND SURVEY CORNER CERTIFICATE

OF 15

Land Survey Monuments situated in Section 23, Township 96 North, Range 13 West, of the Fifth Principal Meridian, CHICKASAW County, Iowa. Previously recorded in NONE in County Recorder's Office. (book, page, document number, etc.)

Section 15-96-13  
As referred to in  
Engr. Tie Book.

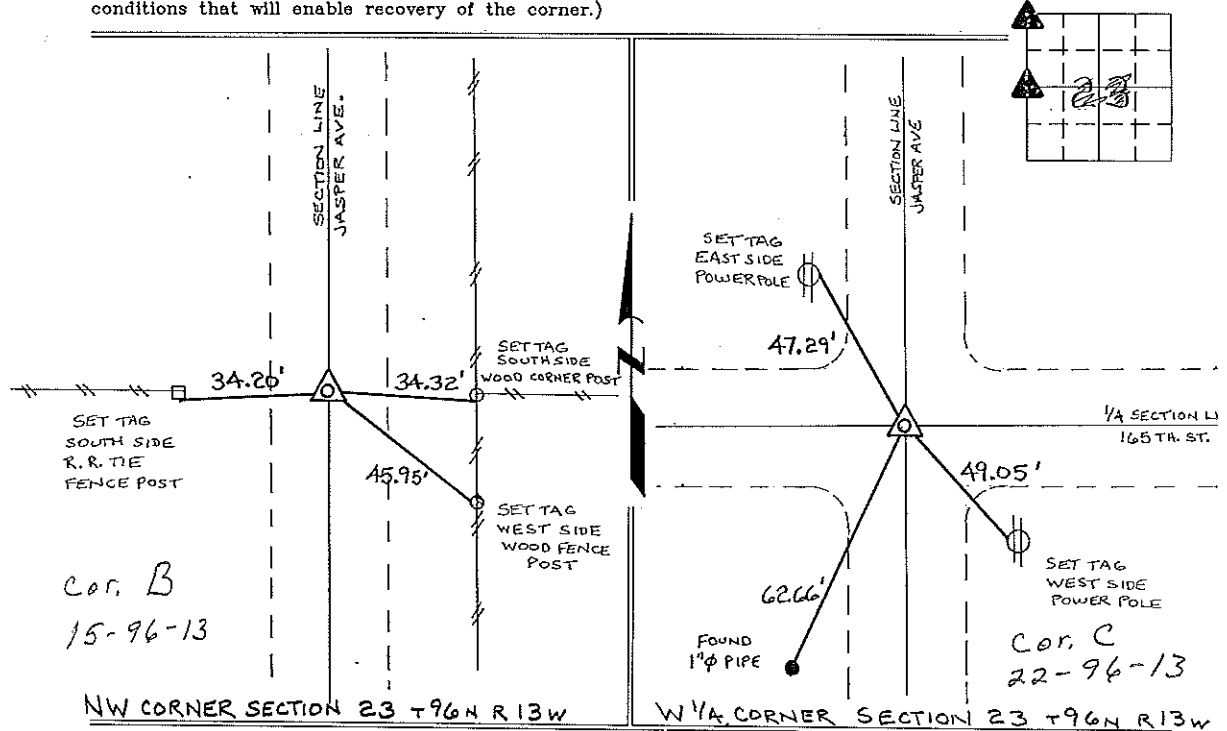
(Show reason for preparing this certificate, the evidence and detailed procedures used in establishing the corner positions and monumentation found or placed.)

Monument Description and Remarks: NW CORNER SECTION 23 T96N R13W:  
FOUND 1/2" Ø IRON PIN, FROM INFORMATION OBTAINED FROM THE COUNTY ENGINEERS  
OFFICE IN FIELD BOOK "WASHINGTON TWP. CORNER TIES."

W 1/4 CORNER SECTION 23 T96N R13W: FOUND 1" SQUARE IRON BAR, FROM INFORMATION  
OBTAINED FROM THE COUNTY ENGINEERS OFFICE IN FIELD BOOK "WASHINGTON TWP. CORNER TIES."

PLAN - VIEW

(Show a minimum of three reference ties to durable physical objects, relevant monuments and physical conditions that will enable recovery of the corner.)



Cor. B  
15-96-13

Cor. C  
22-96-13

NW CORNER SECTION 23 T96N R13W

W 1/4 CORNER SECTION 23 T96N R13W

I hereby certify that the survey work was completed and this certificate was prepared by me or under my direct personal supervision and that I am a duly registered land surveyor under the laws of the state of Iowa.

Signature: Lyle G. Tekippe  
Lyle G. Tekippe  
Date: 10-23-96 Reg. No. 7080  
My Registration Renewal Date is December 31, 1998

Seal



Corners	Section	Twp.	Range
NW	23	96N	13W
	Cor B	15-96-13	
W 1/4	23	96N	13W
	Cor C	22-96-13	

Placed in tie  
Books 11/20/96