

Instrument #: 2022-1885
 10/14/2022 03:34:21 PM Total Pages: 2
 SCC SECTION CORNER CERTIFICATES
 Recording Fee: \$ 12.00
 Shirley Troyna, Recorder, Chickasaw County Iowa



Prepared by: Kyle A. Johnson Address: 1900 MEDICAL ARTS AVE S, SUITE 100 SARTELL, MN Phone: 1-888-937-5150

UNITED STATES PUBLIC LAND SURVEY CORNER CERTIFICATE FOR

Land survey monuments situated in Section 15, Township 96 NORTH

Range 13 WEST, of the Fifth Principal Meridian, CHICKASAW County, Iowa.

Previously Recorded in _____ in County Recorder's Office.

(Show reason for preparing this certificate, the evidence and detailed procedures used in establishing the corner positions and monumentation found or placed)

MONUMENT DESCRIPTION AND REMARKS:

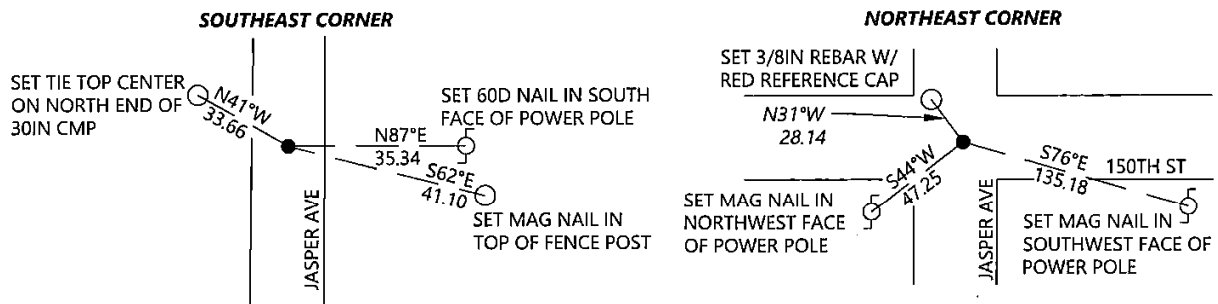
SOUTHWEST CORNER: Westwood Professional Services found a 5/8" rebar 0.2' deep of unknown origin. Monument is near centerline of N/S road and in line with fence to the east. Accepting monument as the best available evidence of the corner location. Set 3 ties. Filing corner record as there is no certificate on file for this corner.

SOUTHEAST CORNER: Westwood Professional Services found a 1/2" iron pin but no ties. Monument agrees with distances from previous records. Accepting corner location and set 3 ties. Filing corner record as there are no longer three valid ties of record.

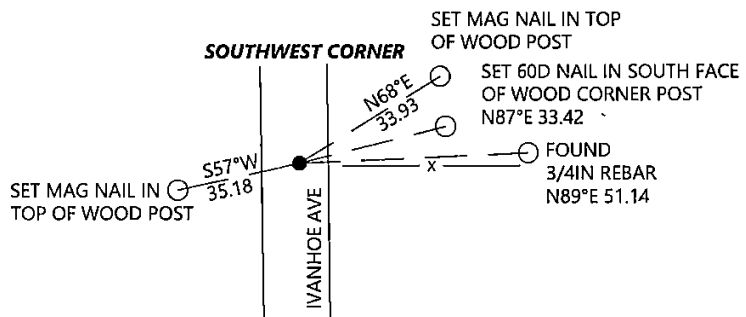
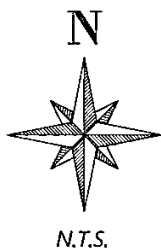
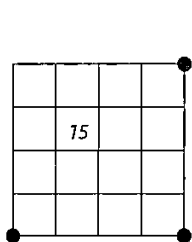
NORTHEAST CORNER: Westwood Professional Services found a T-post 0.5' deep near intersection of N/S E/W road. Accepting T-post as the best available evidence of the corner location. Set 3 ties and file corner record as there is no certificate on file for this corner.

PLAN - VIEW

(Show a minimum of three reference ties to durable physical objects, relevant monuments and physical conditions that will enable recovery of the corner)



Cor. B 15-96-13



I hereby certify that this land surveying document was prepared and the related survey work was performed by me or under my direct personal supervision and that I am a duly licensed Land Surveyor under the laws of the state of Iowa.

Signature: Kyle A. Johnson Date: 10/4/2022

Typed/Printed Name: Kyle A. Johnson

License Number: 25725

My license renewal date is December 31, 2022

Pages or sheets covered by this seal: THIS SHEET

Corners to be Indexed

Corners	Section	Twp.	Range
SE	15	96	13
SW	15	96	13
NE	15	96	13

Prepared by: Kyle A. Johnson Address: 1900 MEDICAL ARTS AVE S, SUITE 100 SARTELL, MN Phone: 1-888-937-5150

UNITED STATES PUBLIC LAND SURVEY CORNER CERTIFICATE FOR

Land survey monuments situated in Section 15, Township 96 NORTH
 Range 13 WEST, of the Fifth Principal Meridian, CHICKASAW County, Iowa.
 Previously Recorded in _____ in County Recorder's Office.

(Show reason for preparing this certificate, the evidence and detailed procedures used in establishing the corner positions and monumentation found or placed.)

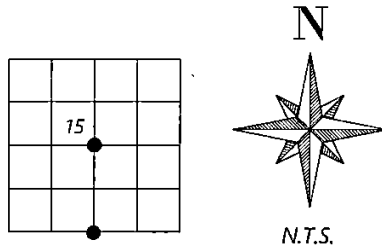
MONUMENT DESCRIPTION AND REMARKS:

SOUTH QUARTER CORNER: Westwood Professional Services searched the area but did not find any monumentation. Proportionate distance from engineers tie book lies +/-16 feet north of the N and E fence line extension intersection. Holding fence line extension intersection as the best available evidence of the corner location. Filing corner record as there is no certificate on file for this corner.

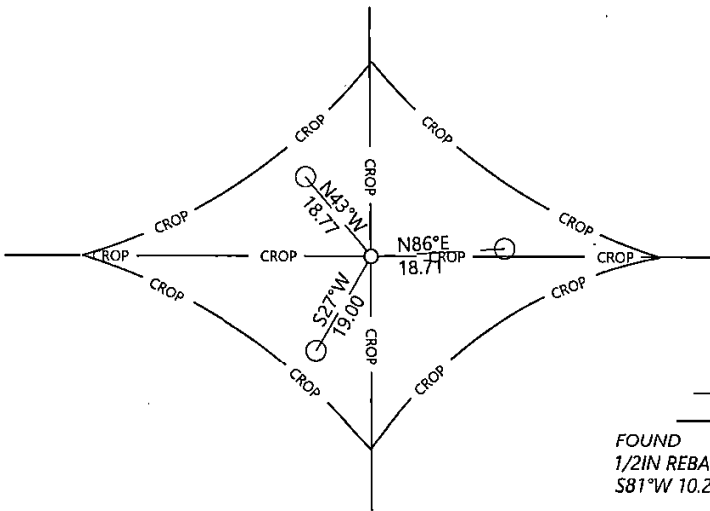
CENTER QUARTER CORNER: Westwood Professional Services found a 4x6x9 red stone and 2 ties per 2015 record. Set 3/8" rebar with red reference cap 0.4' north of stone. Accepting corner location and set 1 tie. Filing corner record as there are no longer 3 valid ties of record.

PLAN - VIEW

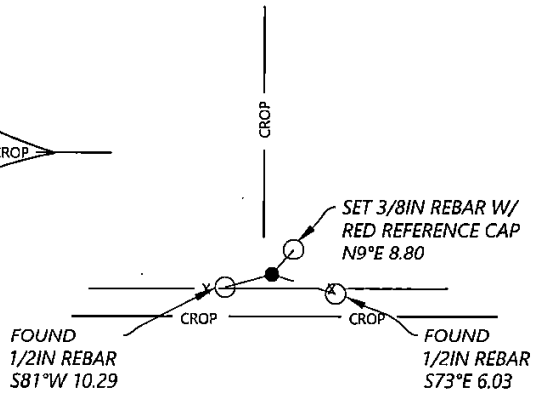
(Show a minimum of three reference ties to durable physical objects, relevant monuments and physical conditions that will enable recovery of the corner.)



SOUTH QUARTER



CENTER QUARTER



I hereby certify that this land surveying document was prepared and the related survey work was performed by me or under my direct personal supervision and that I am a duly licensed Land Surveyor under the laws of the state of Iowa.

Signature: Kyle A. Johnson Date: 10/14/2022
 Typed/Printed Name: Kyle A. Johnson
 License Number: 25725
 My license renewal date is December 31, 2022
 Pages or sheets covered by this seal: THIS SHEET

Corners to be Indexed

Corners	Section	Twp.	Range
SQ	15	96	13
CQ	15	96	13