

Sec. 24-96-13
As referred to in
Engr. Tie Book

Chickasaw Co. Recorder
Cindy Messersmith
Fee Book 2008-1224
06/20/2008 @0115PM
SCC SEC COR CERT
Book: Page: # Pages: 1
Total Fees: \$7.00

Herold - Recks Surveying, 25 1/2 East Main Street, Suite 204, New Hampton, IA 50659, Ph. 641-394-2725

UNITED STATES PUBLIC LAND SURVEY CORNER CERTIFICATE

Land Survey Monuments situated in Section 23, Township 96 North, Range 13 West of the Fifth Principal Meridian, Chickasaw County, Iowa. Previously recorded in 1) Bk. 154, Pg. 497, 2) Bk. 162, Pg. 378 in the County Recorder's office.

This certificate is being prepared in accordance with Iowa Code Chapter 355.11 because:

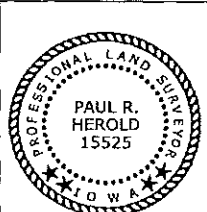
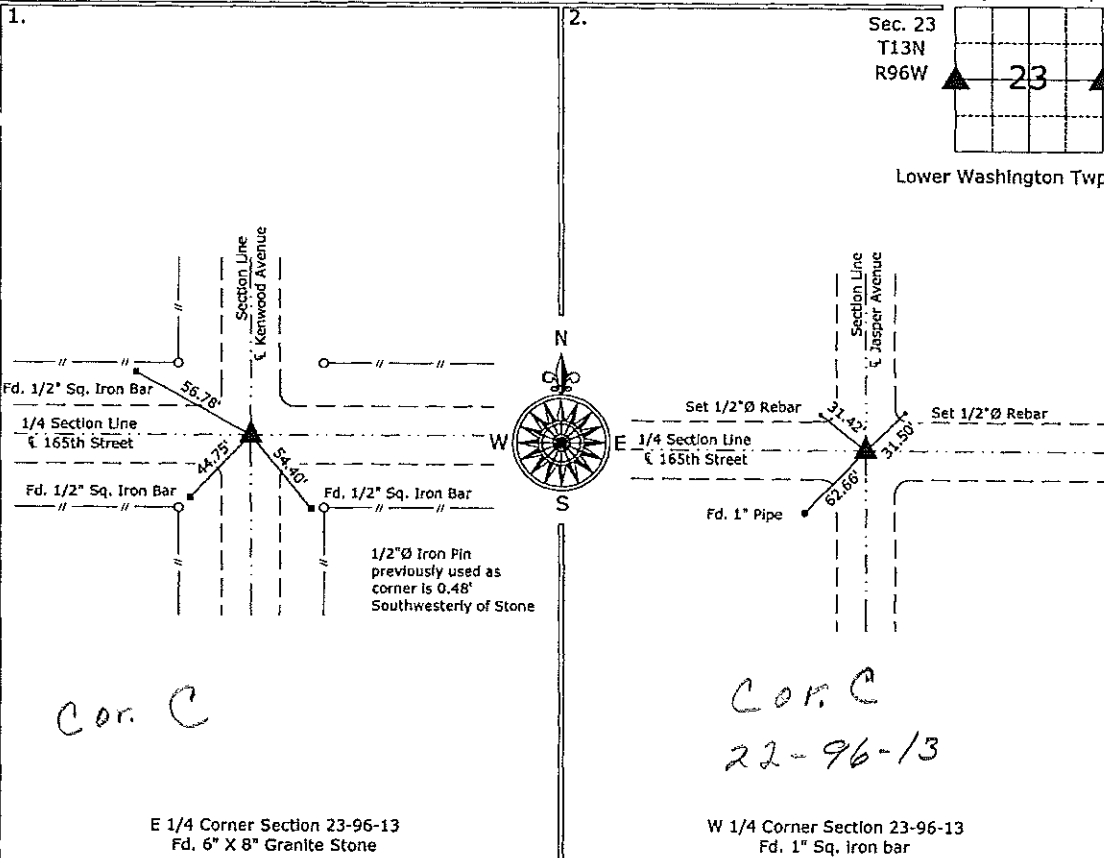
- There is no certificate on file for this corner.
- There are no longer three valid ties of record.
- There are changes to reference ties of record.
- There is change of monumentation of record.
- To clarify description of record monument (ties).

Monument Description and Remarks:

- 1.) E 1/4 Corner - Fd. 6" X 8" Granite Stone from information obtained from the County Engineer's office in Book "Surveyor's Record". Also located 1/2"Ø iron pin previously used as the corner. This pin is in fact a reference tie.
- 2.) W 1/4 Corner - Fd. 1" Sq. iron bar from previous corner certificate. Only 1 tie remained, added 2 ties to update the corner.

PLAN - VIEW

(Show a minimum of three reference ties to durable physical objects, relevant monuments and physical conditions that will enable recovery of the corner.)



I hereby certify that this land surveying document was prepared and the related survey work was performed by me or under my direct personal supervision and that I am a duly licensed Land Surveyor under the laws of the State of Iowa.

Paul R. Herold 6-20-08
Paul R. Herold Date:
License number 15525
My license renewal date is December 31, 2008.
Sheets covered by this seal: Individual sheet only

List Corners to be Indexed			
Corners	Section	Twp.	Range
E 1/4	23	13	96
W 1/4	23	13	96

Project Number: 2008-060
FB: Chickasaw County 1, Pg. 72

File: S:\Projects\2008\2008-060\dwg\2008-060.dwg, 6/20/2008 09:26:17

UNITED STATES PUBLIC LAND SURVEY CORNER CERTIFICATE

OF
Land Survey Monuments situated in Section 24 14, Township 96 NORTH, Range 13 WEST, of the Fifth Principal Meridian, CHICKASAW County, Iowa. Previously recorded in NONE in County Recorder's Office.

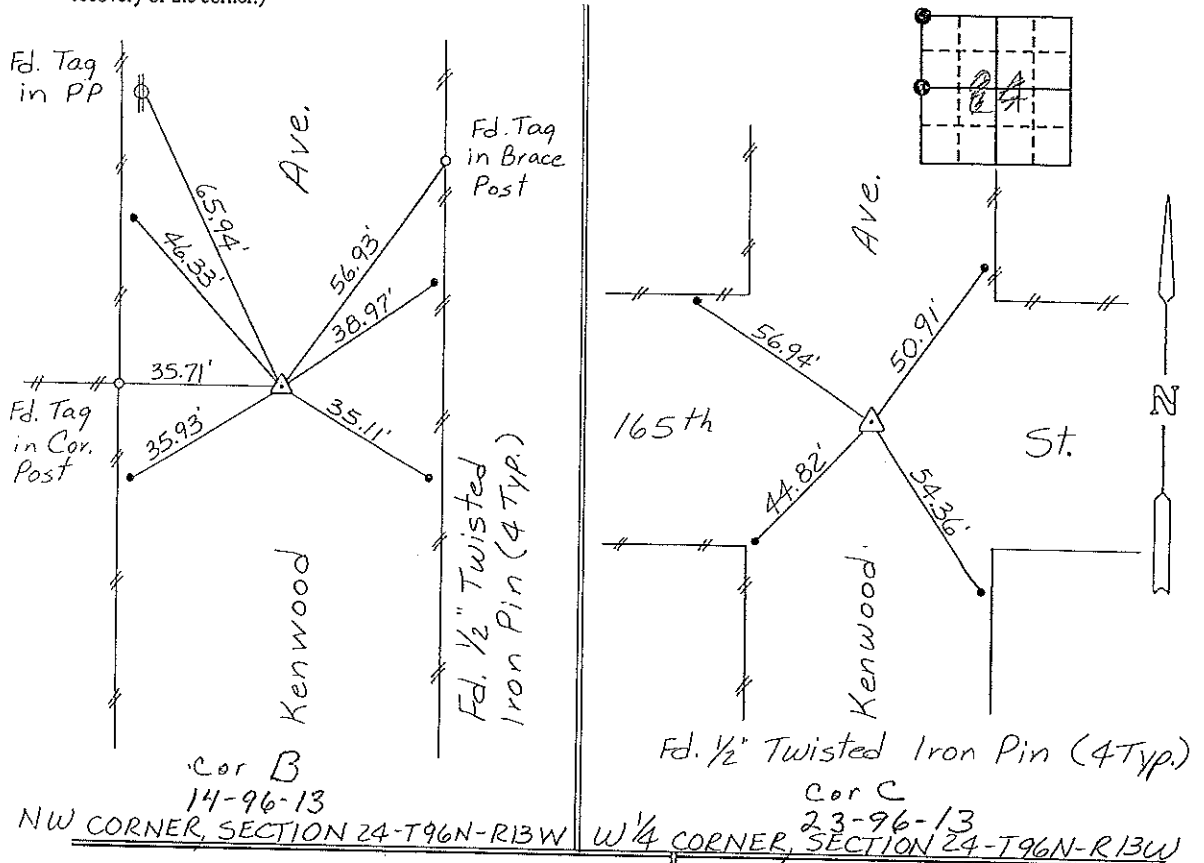
(Show reason for preparing this certificate, the evidence and detailed procedures used in establishing the corner positions and monumentation found or placed.)

Monument Description and Remarks: NW CORNER, SECTION 24-T96N-R13W: Found 1/2" Twisted Iron Pin.
W 1/4 CORNER, SECTION 24-T96N-R13W: Found 1/2" Iron Pin

Section 14-96-13
As referred to in
Engn. Tie Book

PLAN - VIEW

(Show a minimum of three reference ties to durable physical objects, relevant monuments and physical conditions that will enable recovery of the corner.)

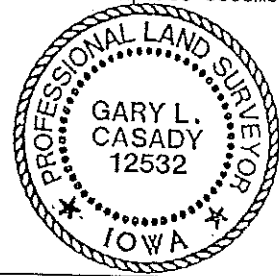


I hereby certify that the survey work was completed and this certificate was prepared by me or under my direct personal supervision and that I am a duly registered land surveyor under the laws of the state of Iowa.

Signature: Gary L. Casady
Name typed or printed: Gary L. Casady
Date: 4-21-94 Reg. No. 12532
My Registration Expires December 31, 1994

List Corners to be Indexed

Corners	Section	Twp	Range
NW	24	96N	13W
Corner B	24-96-13		
W 1/4	24	96N	13W
Corner C	23-96-13		



Placed in tie book
5/24/94
JKM