

Chickasaw Co. Recorder
 Cindy Messersmith
Fee Book 2017-0328
 03/15/2017 @0327PM
 SEC. SEC. COR. CERT
 Book: Page: # Pages: 1
 Total Fees: \$7.00

Prepared by & Return to: Herold - Reicks Surveying, 10 East Main Street, New Hampton, IA 50655, Ph. 541-394-2725

United States Public Land Survey Corner Certificate

Land Survey Monument situated in
 Section 23, Township 96 North, Range 13 West of the Fifth Principal Meridian, **Chickasaw** County, Iowa.
 Not on file in the County Recorder's office.

This certificate is being prepared in compliance with Iowa Code Chapter 355.11 because:

- There is no certificate on file for this corner.
- There are no longer three valid ties of record.
- There are changes to reference ties of record.
- There is change of monumentation of record.
- To clarify description of record monument (ties).

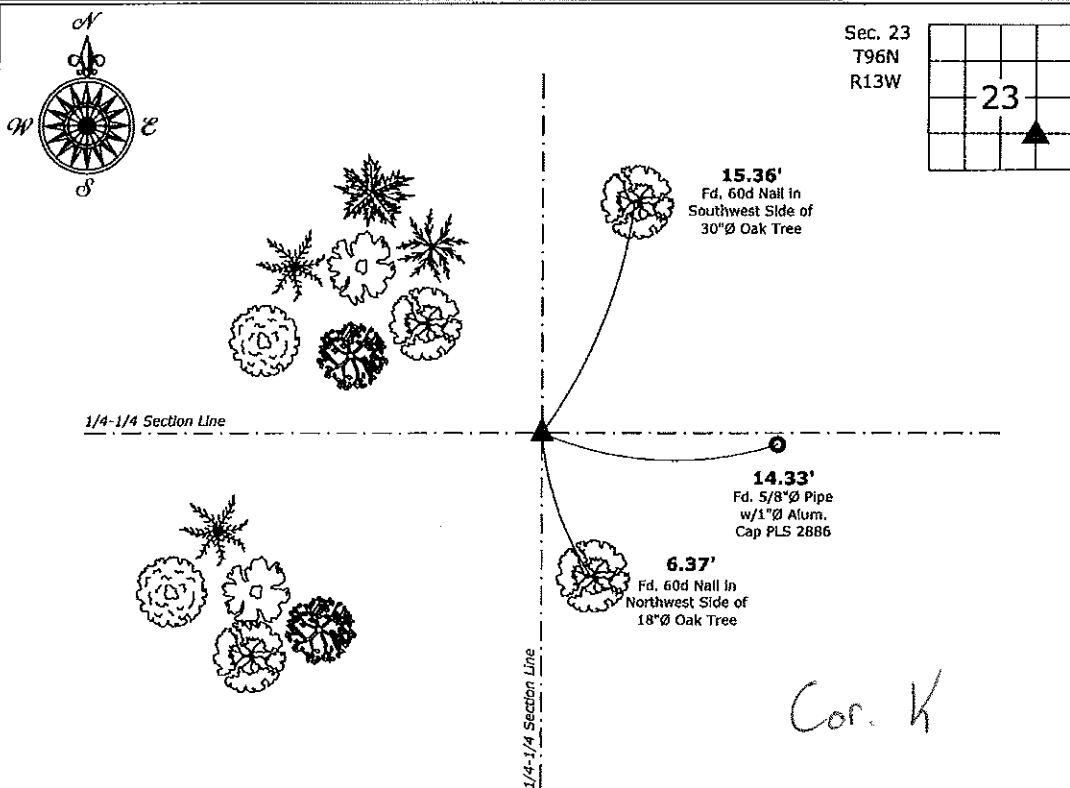
Monument Description and Remarks:

Southeast Corner NW 1/4 - SE 1/4: Set 5/8"Ø rebar w/2"Ø aluminum cap PLS 15525 at the intersection of 1/4-1/4 Section Lines.

An extensive search of all of the records within the County offices was performed as part of the section corner recovery, No records were located of the perpetuation of a monument at this corner.

Plan View

(Show a minimum of three reference ties to durable physical objects, relevant monuments and physical conditions that will enable recovery of the corner.)



Southeast Corner NW 1/4 - SE 1/4 of Section 23-96-13
 Set 5/8"Ø rebar w/2"Ø aluminum cap PLS 15525



I hereby certify that this land surveying document was prepared and the related survey work was performed by me or under my direct personal supervision and that I am a duly licensed Land Surveyor under the laws of the State of Iowa.

Paul R. Herold 3-14-17
 Paul R. Herold Date:
 License number 15525
 My license renewal date is December 31, 2018.
 Sheets covered by this seal: Individual sheet only

List Corner to be Indexed			
Corner	Section	Twp.	Range
SE-NW-SE	23	96	13
Project Number: 2017-011			
FB: Chickasaw Co. B, Pgs. 32-32			

File: S:_C3D Projects\County Control Systems\CHICKASAW\CHICK-20 WOYCHICK-20 LAJ.dwg, 3/14/2017 2:43:01 PM