

UNITED STATES PUBLIC LAND SURVEY CORNER CERTIFICATE

OF
Land Survey Monuments situated in Section 24 14, Township 96 NORTH, Range 13 WEST, of the Fifth Principal Meridian, CHICKASAW County, Iowa.
Previously recorded in NONE in County Recorder's Office.
(book, page, document number, etc.)

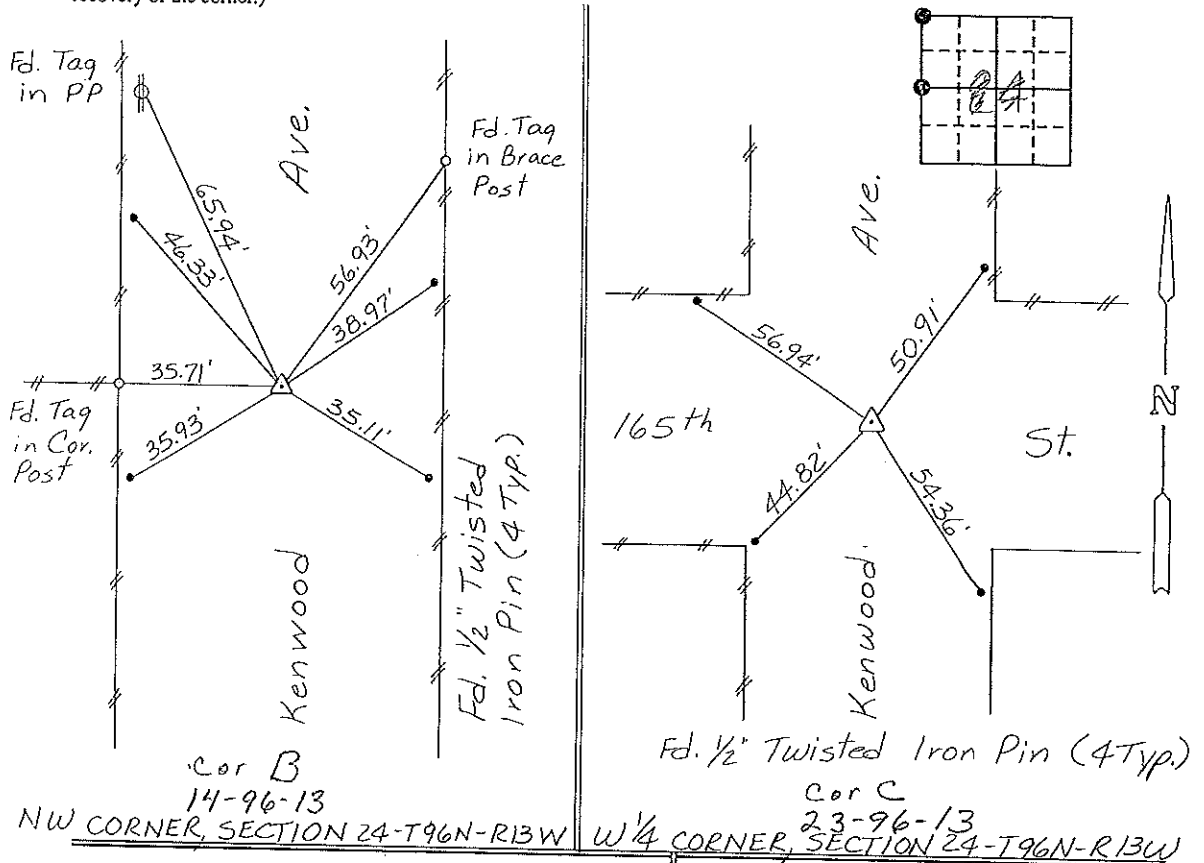
(Show reason for preparing this certificate, the evidence and detailed procedures used in establishing the corner positions and monumentation found or placed.)

Monument Description and Remarks: NW CORNER, SECTION 24-T96N-R13W:
Found 1/2" Twisted Iron Pin.
W 1/4 CORNER, SECTION 24-T96N-R13W: Found 1/2" ϕ Iron Pin

Section 14-96-13
As referred to in
Engin. Tie Book

PLAN - VIEW

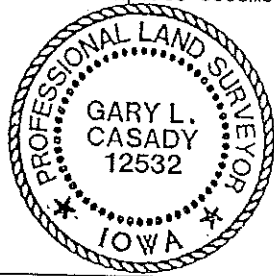
(Show a minimum of three reference ties to durable physical objects, relevant monuments and physical conditions that will enable recovery of the corner.)



I hereby certify that the survey work was completed and this certificate was prepared by me or under my direct personal supervision and that I am a duly registered land surveyor under the laws of the state of Iowa.

Signature: Gary L. Casady
Name typed or printed: Gary L. Casady
Date: 4-21-94 Reg. No. 12532
My Registration Expires December 31, 1994

| Corners | Section | Twp | Range |
|----------|----------|-----|-------|
| NW | 24 | 96N | 13W |
| Corner B | 14-96-13 | | |
| W 1/4 | 24 | 96N | 13W |
| Corner C | 23-96-13 | | |



SEAL

Placed in tie book
5/24/94
JKM