

Instrument #: 2022-0228  
 02/09/2022 09:50:35 AM Total Pages: 1  
 SCC SECTION CORNER CERTIFICATES  
 Recording Fee: \$ 7.00  
 Shirley Troyna, Recorder, Chickasaw County Iowa



Prepared By and Return To: BENJAMIN V. STARK STARK SURVEYING INC., 1622 South Taft, Mason City, Iowa, 50401 (641) 423-7947

## UNITED STATES PUBLIC LAND SURVEY CORNER CERTIFICATE OF

Land Survey Monuments situated in Section 24, Township 96N, Range 13W, of the Fifth P.M., Chickasaw County, Iowa. Reason for Certificate Set 1 Monument.

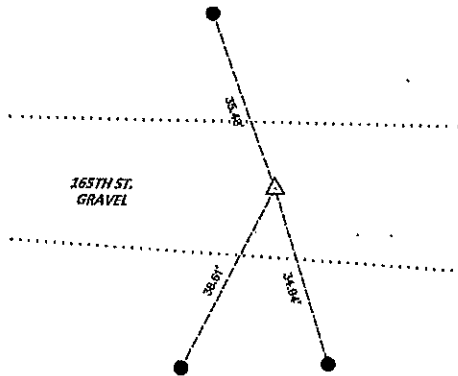
Monument Description and Remarks:

CENTER SEC. 24-T96N-R13W SET A 1/2" REBAR W/ YPC 23709 AT THE INTERSECTION OF THE CORRESPONDING 1/4 CORNERS.

### PLAN - VIEW

(Show a minimum of three reference ties to durable physical conditions that will enable recovery of the corner.)

CENTER  
 SEC. 24-T96N-R13W  
 SET 1/2" REBAR  
 W/ YPC 23709



NOT TO SCALE

LEGEND	
△	SECTION CORNER SET AS NOTED
▲	SECTION CORNER FOUND
●	SET 1/2 REBAR
○	POWER POLE
—	EXISTING FENCELINE
X	FOUND "X" NAILS
⊗	SET 1/2" REBAR WITH YPC 23709
⊕	SET 60D NAIL W/ OPC REF. PNT.

Cor O  
 24-96-13

I hereby certify that this Land Surveying document was prepared and the related survey work was performed by me or under my direct personal supervision and that I am a duly licensed Land Surveyor under the laws of the State of Iowa.

*Benjamin V. Stark* 12-6-21

Benjamin V. Stark  
 License Number 23709  
 My license renewal date is December 31, 2021

**STARK  
 SURVEYING  
 INC.**



Seal

PROJECT NO.: 21280  
 SHEET 1 OF 1

#### LAND CORNER TO BE INDEXED

Corners	Sections	Twp	Range
CENTER	24	96N	13W

