

FILED 2005 - 2045
 RECORDER'S OFFICE
 CHICKASAW COUNTY, IOWA
Dec #700
 2005 SEP 19 AM 9 35

CINDY MESSERSMITH
 COUNTY RECORDER

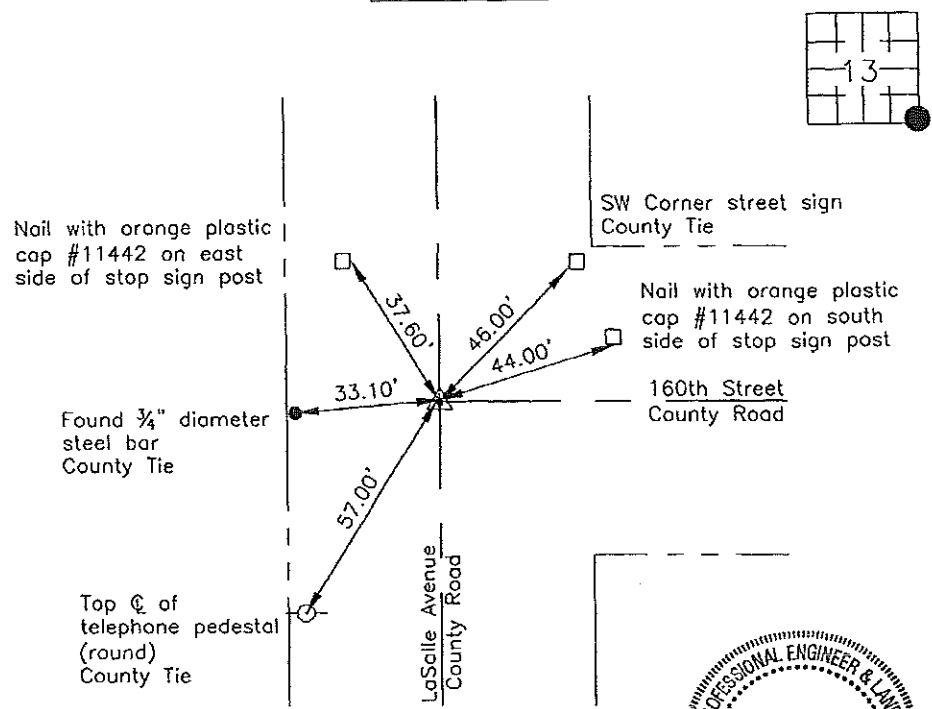
Prepared by: Erdman Engineering, P.C., 708 Commerce Drive, P.O. Box 246, Decorah, Iowa 52101 (563) 382-4194

United States Public Land Survey Corner Certificate
 of

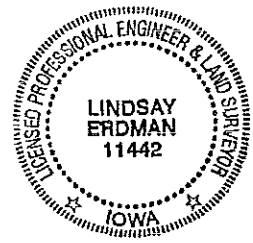
Land Survey Monuments situated in Section 13, Township 96, Range 13 West of the 5th Principal Meridian in Chickasaw County, Iowa. Previously recorded in does not apply in the county Recorder's Office.

Monument Description and Remarks: This certificate is prepared in accordance with Section 193C of the Code of Iowa. No previous certificate has been filed for this corner location. Chickasaw County Engineer's Reference Ties show that an iron pin had been found in 1953 and in 1971, and a nail had been found in 1996. Based on Chickasaw County Engineer's Reference Ties we found a street sign, a telephone pedestal and a 3/4" diameter steel bar used previously as tie markers. From these ties we found a 3/4" diameter steel bar, down ±8" below the existing crushed rock surface at the approximate centerline-centerline intersection of the county roads. We used the steel bar as the SE Corner of Section 13, Township 96 North, Range 13 West.

Plan-View



Cor B



I hereby certify that this land surveying document was prepared and the related survey work was performed by me or under my direct personal supervision and that I am a duly licensed Land Surveyor under the laws of the State of Iowa.

Signature Lindsay Erdman
 Lindsay Erdman, P.E. and P.L.S., Iowa License Number 11442

Date: 9/16/05

My license renewal date is December 31, 2006

Corner(s) to be Indexed

Corner	Section	Township	Range
SE	13	96	13