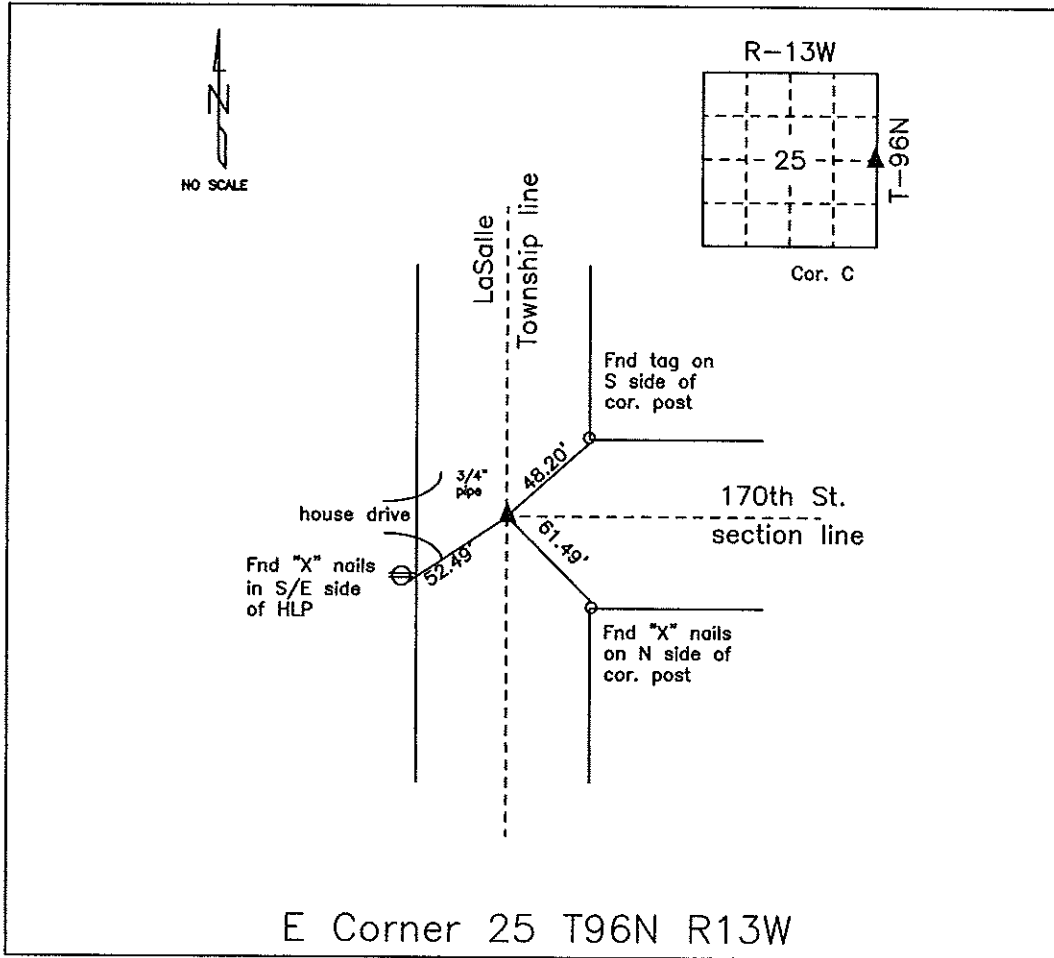


# COUNTY ENGINEER'S SECTION CORNER PRESERVATION RECORD

LAND SURVEY MONUMENT LOCATED IN SECTION 25, TOWNSHIP 96 N  
NORTH, RANGE 13 W, OF THE 5TH P.M. Chickasaw COUNTY, IOWA  
PREVIOUSLY RECORDED BOOK 159, PAGE 113



**MONUMENT DESCRIPTION AND NARRATIVE** Found 3/4" pipe

Previously recorded by Lyle Tekippe (PLS 7060) in Book 159, Page 113 as the E corner of section

25, T96N, R13W

All ties are slope chained

I AM NOT A REGISTERED LAND SURVEYOR UNDER THE LAWS OF THE STATE OF IOWA

JIM FOSTER CHICKASAW CO. DATE: 09/11/09