

Prepared by: Erdman Engineering, P.C., 708 Commerce Drive, P.O. Box 246, Decorah, Iowa, (563)382-4194

UNITED STATES PUBLIC LAND SURVEY CORNER CERTIFICATE  
 OF

Land Survey Monuments situated in Section 24, Township 97 North, Range 13 West, of the Fifth Principal Meridian, Chickasaw County, Iowa, Previously recorded in does not apply in the County Recorder's Office.

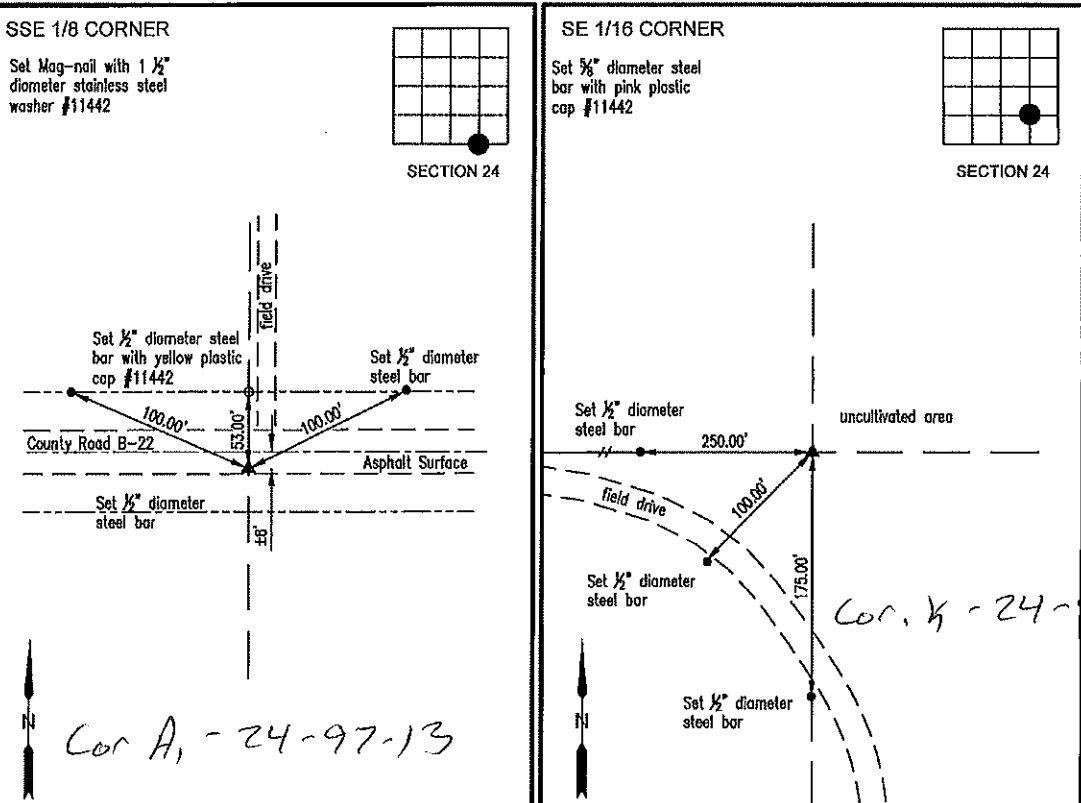
**Monument Description and Remarks:**

This certificate is prepared in accordance with Section 355.11 of the Code of Iowa. No previous certificates have been filed for these corner locations.

**SSE 1/8 Corner:** We found no record of the SSE 1/8 Corner being set. We found no evidence of a monument in the field other than the county road and the occupation line between the fields. We found the S 1/4 Corner and the SE Corner. We set a Mag-nail with 1 1/2" diameter stainless steel washer #11442 on line and midway between the S 1/4 Corner and the SE Corner as the SSE 1/8 Corner of Section 24, Township 97 North, Range 13 West.

**SE 1/16 Corner:** We found no record of the SE 1/16 Corner being set. We found no evidence of a monument in the field other than a fence line running west and the occupation line between the fields to the south. We found the E 1/4 Corner, S 1/4 Corner and the SE Corner. We set the Center Section and the SSE 1/8 Corner. We Computed the location of the E 1/8 Corner midway between the E 1/4 Corner and the Center Section. We set a 1/2" diameter steel bar with pink plastic cap #11442 on line between the E 1/8 Corner and the SSE 1/8 Corner and in line with the fence line running west as the SE 1/16 Corner of Section 24, Township 97 North, Range 13 West.

**PLAN-VIEW**  
 (NOT TO SCALE)



I hereby certify that this land surveying document was prepared and the related survey work was performed by me or under my direct personal supervision and that I am a duly licensed Land Surveyor under the laws of the State of Iowa.



*Lindsay Erdman* 2/28/20  
 Date

Lindsay Erdman, P.E. & P.L.S.  
 Licensed Professional Land Surveyor  
 Iowa License Number 11442  
 My License renewal date is December 31, 2020  
 Pages or sheets covered by this seal: THIS SHEET ONLY

**List Corner(s) to be Indexed**

Corner(s)	Section	Township	Range
SSE 1/8	24	97N	13W
SE 1/16	24	97N	13W

**ERDMAN ENGINEERING, P.C.**  
 CIVIL ENGINEERING & LAND SURVEYING  
 Decorah, Iowa