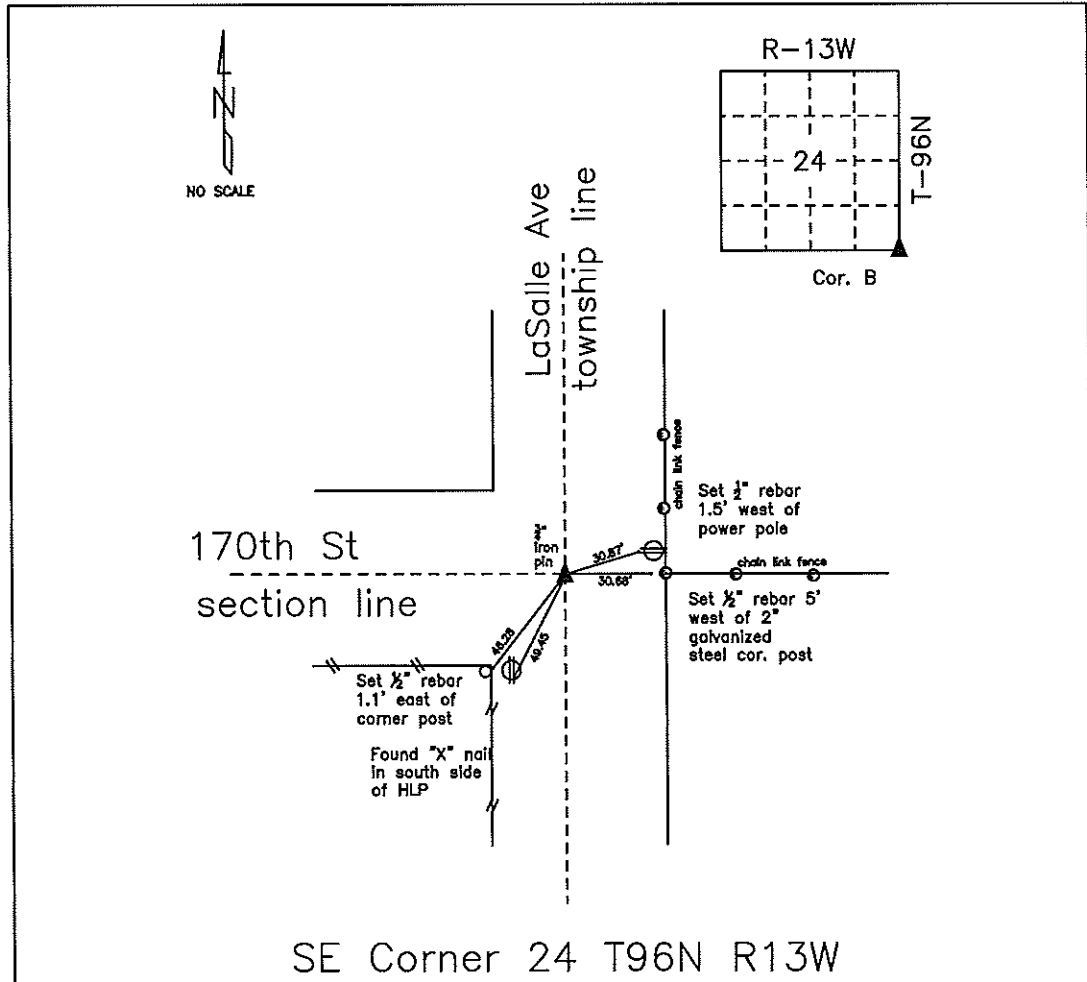


COUNTY ENGINEER'S SECTION CORNER PRESERVATION RECORD

LAND SURVEY MONUMENT LOCATED IN SECTION 24, TOWNSHIP 96 N
NORTH, RANGE 13 W, OF THE 5TH P.M. Chickasaw COUNTY, IOWA
PREVIOUSLY RECORDED BOOK 2003, PAGE 0554



MONUMENT DESCRIPTION AND NARRATIVE Found 3/4" iron pin

Previously recorded by Lyle Tekippe (PLS 7060) in Book 159, Page 113 as the S/E corner of section

24-T96N-R13W

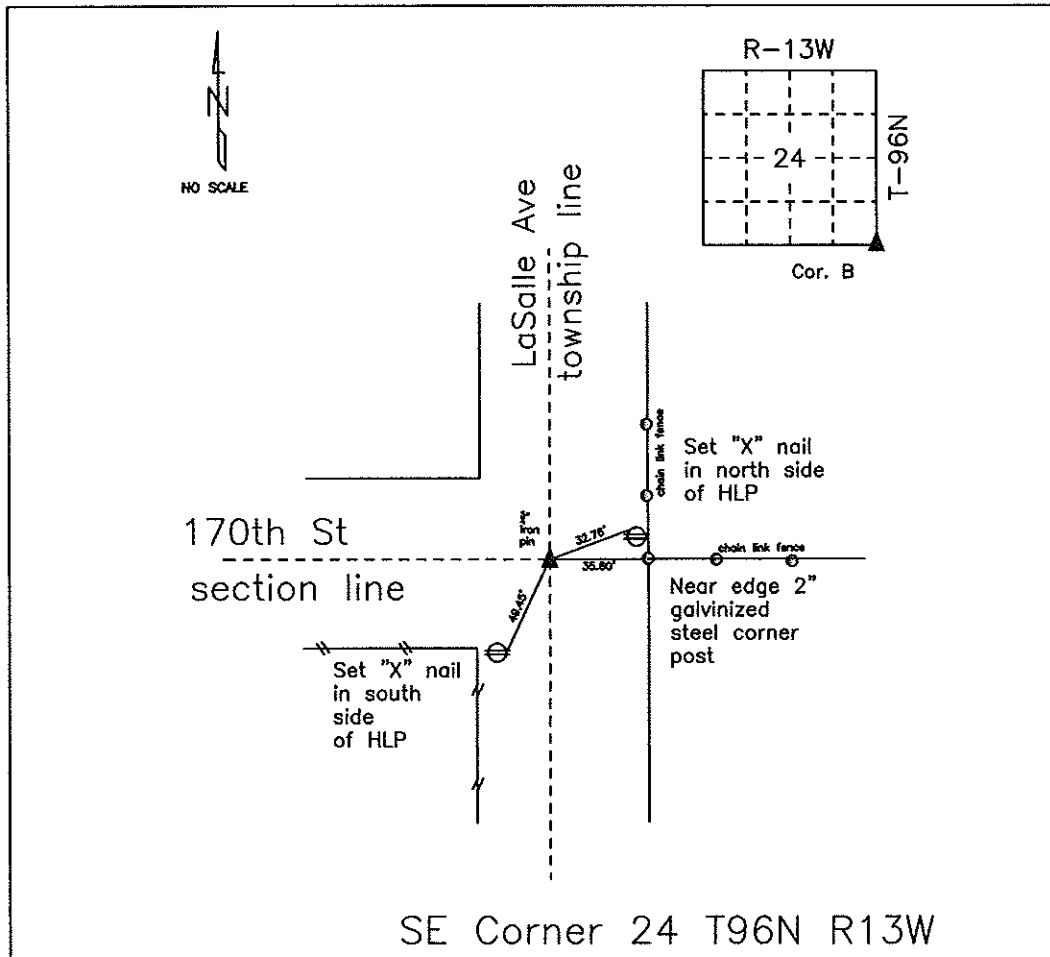
All ties are GPS surveyed

I AM NOT A REGISTERED LAND SURVEYOR UNDER THE LAWS OF THE STATE OF IOWA

JIM FOSTER CHICKASAW CO. DATE: 11/12/13

COUNTY ENGINEER'S SECTION CORNER PRESERVATION RECORD

LAND SURVEY MONUMENT LOCATED IN SECTION 24, TOWNSHIP 96 N
NORTH, RANGE 13 W, OF THE 5TH P.M. Chickasaw COUNTY, IOWA
PREVIOUSLY RECORDED BOOK 2003, PAGE 0554



MONUMENT DESCRIPTION AND NARRATIVE Found 3/4" iron pin

Previously recorded by Lyle Tekippe (PLS 7060) in Book 159, Page 113 as the S/E corner of section

24-T96N-R13W

All ties are slope chained

I AM NOT A REGISTERED LAND SURVEYOR UNDER THE LAWS OF THE STATE OF IOWA

JIM FOSTER CHICKASAW CO. DATE: 09/14/09