

UNITED STATES PUBLIC LAND SURVEY CORNER CERTIFICATE

OF

Land Survey Monuments situated in Section 23, Township 96 NORTH, Range 13 WEST, of the Fifth Principal Meridian, CHICKASAW County, Iowa. Previously recorded in NONE in County Recorder's Office.

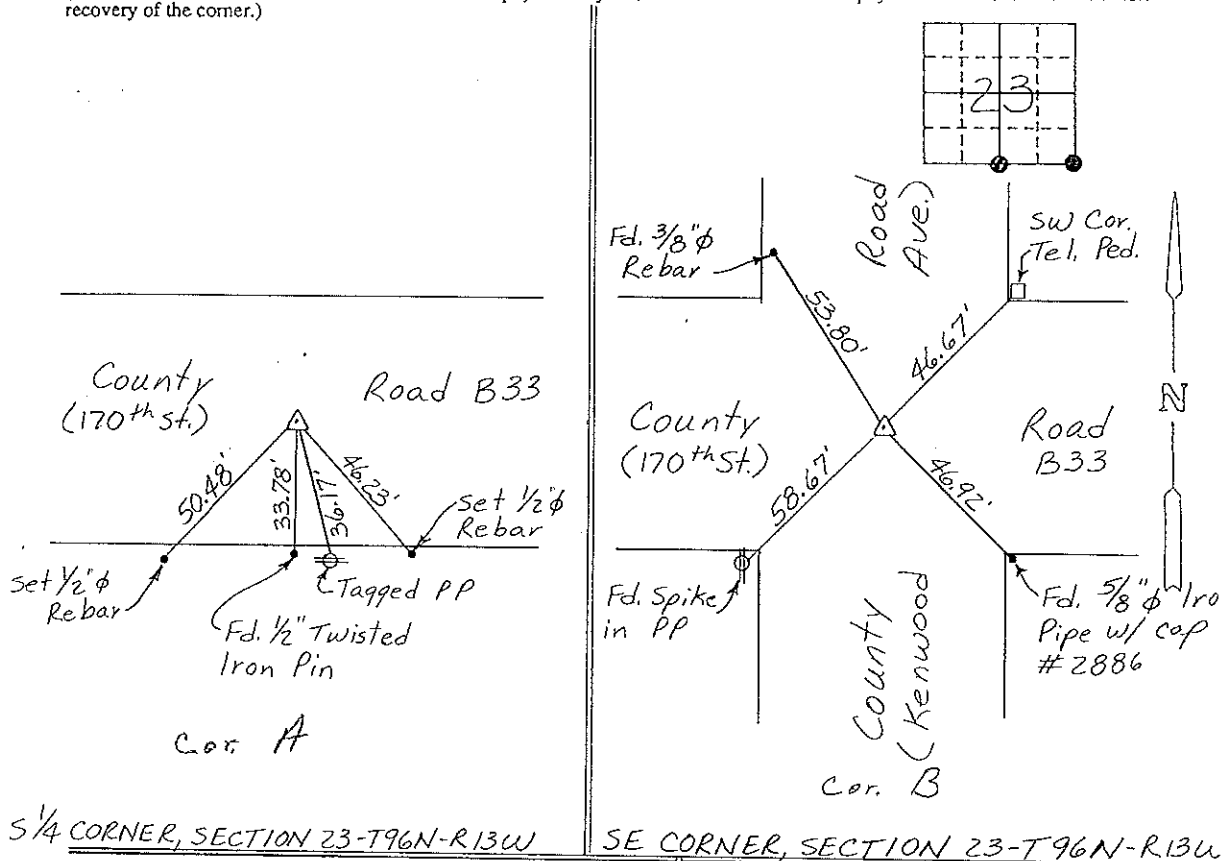
(Show reason for preparing this certificate, the evidence and detailed procedures used in establishing the corner positions and monumentation found or placed.)

Monument Description and Remarks: S 1/4 CORNER, SECTION 23-T96N-R13W:  
Found Redhead matching ties and record distance from SE  
Corner, replaced w/ 1/2" phi Rebar w/cap.

SE CORNER, SECTION 23-T96N-R13W: FOUND PK NAIL.

PLAN - VIEW

(Show a minimum of three reference ties to durable physical objects, relevant monuments and physical conditions that will enable recovery of the corner.)



S 1/4 CORNER, SECTION 23-T96N-R13W

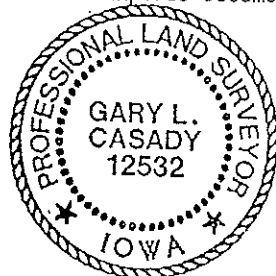
SE CORNER, SECTION 23-T96N-R13W

I hereby certify that the survey work was completed and this certificate was prepared by me or under my direct personal supervision and that I am a duly registered land surveyor under the laws of the state of Iowa.

Signature: Gary L. Casady  
Name typed or printed: Gary L. Casady

Date: 6-28-93 Reg. No. 12532  
My Registration Expires December 31, 1994

Corners	List Corners to be Indexed Section	Twp	Range
S 1/4	ORA-23	96N	13W
SE CORN	B 23	96N	13W



SEAL

*Placed in the Book 7/9/93*