

Prepared by & Return to: Harold - Reicks Surveying, 10 East Main Street, New Hampton, IA 50658, Ph. 641-394-2725

UNITED STATES PUBLIC LAND SURVEY CORNER CERTIFICATE

Land Survey Monuments situated in Section ²³ 25, Township 96 North, Range 13 West of the Fifth Principal Meridian, Chickasaw County, Iowa. Previously recorded in Bk. 152, Pg. 286 in the County Recorder's office.

This certificate is being prepared in compliance with Iowa Code Chapter 355.11 because:

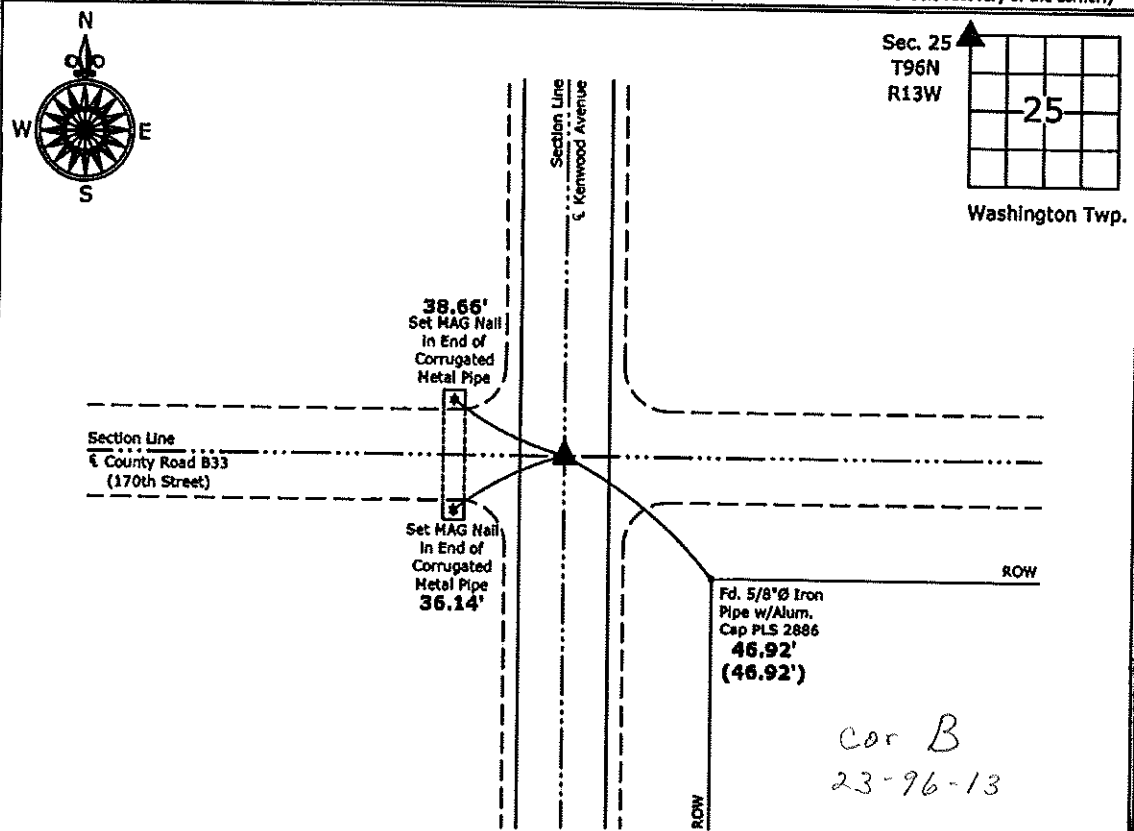
- There is no certificate on file for this corner.
- There are no longer three valid ties of record.
- There are changes to reference ties of record.
- There is change of monumentation of record.
- To clarify description of record monument (ties).

Monument Description and Remarks:

Northwest Corner: Set Survey Mark Nail w/Stainless Steel Washer PLS 15525. Previous Section Corner Certificate indicated PK Nail at location of corner. PK Nail was missing; set corner at record distance from remaining tie and from distances from a Survey and Plat made by Lindsay P. Erdman, recorded on August 21, 1985 in Bk. 135, Pg. 27 on file in the Chickasaw County Recorder's Office. Set new ties to update corner.

PLAN - VIEW

(Show a minimum of three reference ties to durable physical objects, relevant monuments and physical conditions that will enable recovery of the corner.)



Northwest Corner Section 25-96-13
 Set Survey Mark Nail w/Stainless Steel Washer PLS 15525



I hereby certify that this land surveying document was prepared and the related survey work was performed by me or under my direct personal supervision and that I am a duly licensed Land Surveyor under the laws of the State of Iowa.

Paul R. Herold 2-16-12
 Paul R. Herold Date:
 License number 15525
 My license renewal date is December 31, 2012.
 Sheets covered by this seal: Individual sheet only

List Corners to be Indexed			
Corners	Section	Twp.	Range
NW	25	96	13

Project Number: 2012-006
 FB: Chickasaw County 4, Pg. 30

UNITED STATES PUBLIC LAND SURVEY CORNER CERTIFICATE

OF

Land Survey Monuments situated in Section 23, Township 96 NORTH, Range 13 WEST, of the Fifth Principal Meridian, CHICKASAW County, Iowa. Previously recorded in NONE in County Recorder's Office.

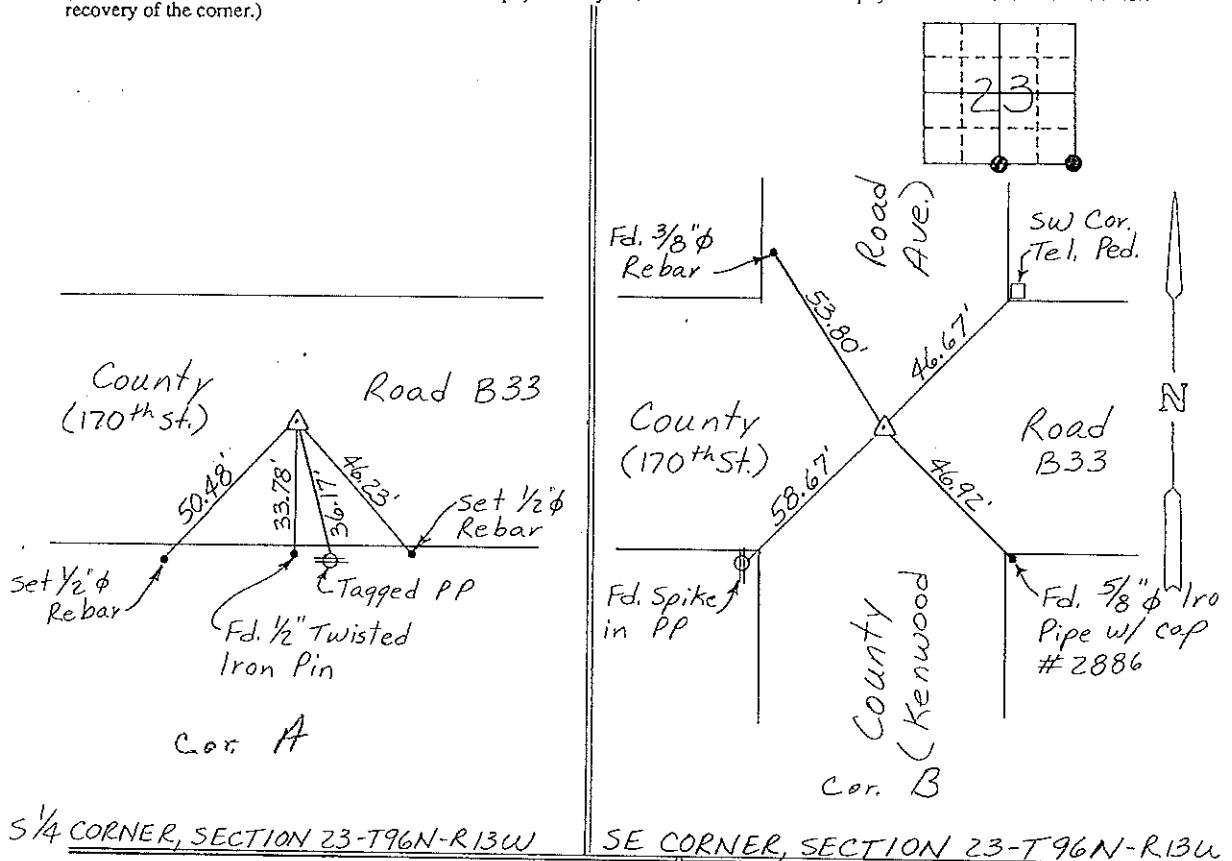
(Show reason for preparing this certificate, the evidence and detailed procedures used in establishing the corner positions and monumentation found or placed.)

Monument Description and Remarks: S 1/4 CORNER, SECTION 23-T96N-R13W:
Found Redhead matching ties and record distance from SE
Corner, replaced w/ 1/2" phi Rebar w/cap.

SE CORNER, SECTION 23-T96N-R13W: FOUND PK NAIL.

PLAN - VIEW

(Show a minimum of three reference ties to durable physical objects, relevant monuments and physical conditions that will enable recovery of the corner.)



S 1/4 CORNER, SECTION 23-T96N-R13W

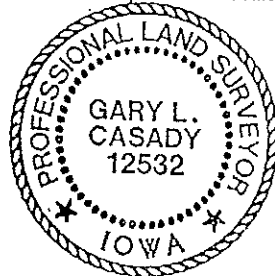
SE CORNER, SECTION 23-T96N-R13W

I hereby certify that the survey work was completed and this certificate was prepared by me or under my direct personal supervision and that I am a duly registered land surveyor under the laws of the state of Iowa.

Signature: Gary L. Casady
Name typed or printed: Gary L. Casady

Date: 6-28-93 Reg. No. 12532
My Registration Expires December 31, 1994

Corners	List Corners to be Indexed Section	Twp	Range
S 1/4 COR. A	23	96N	13W
SE COR. B	23	96N	13W



SEAL

Placed in the Book 7/9/93