

Prepared by & Return to: Herold - Reicks Surveying, 10 East Main Street, New Hampton, IA 50659, Ph. 641-394-2725

### UNITED STATES PUBLIC LAND SURVEY CORNER CERTIFICATE

Land Survey Monuments situated in Section 26, Township 96 North, Range 13 West of the Fifth Principal Meridian, Chickasaw County, Iowa. Not previously recorded in the County Recorder's office.

This certificate is being prepared in compliance with Iowa Code Chapter 355.11 because:

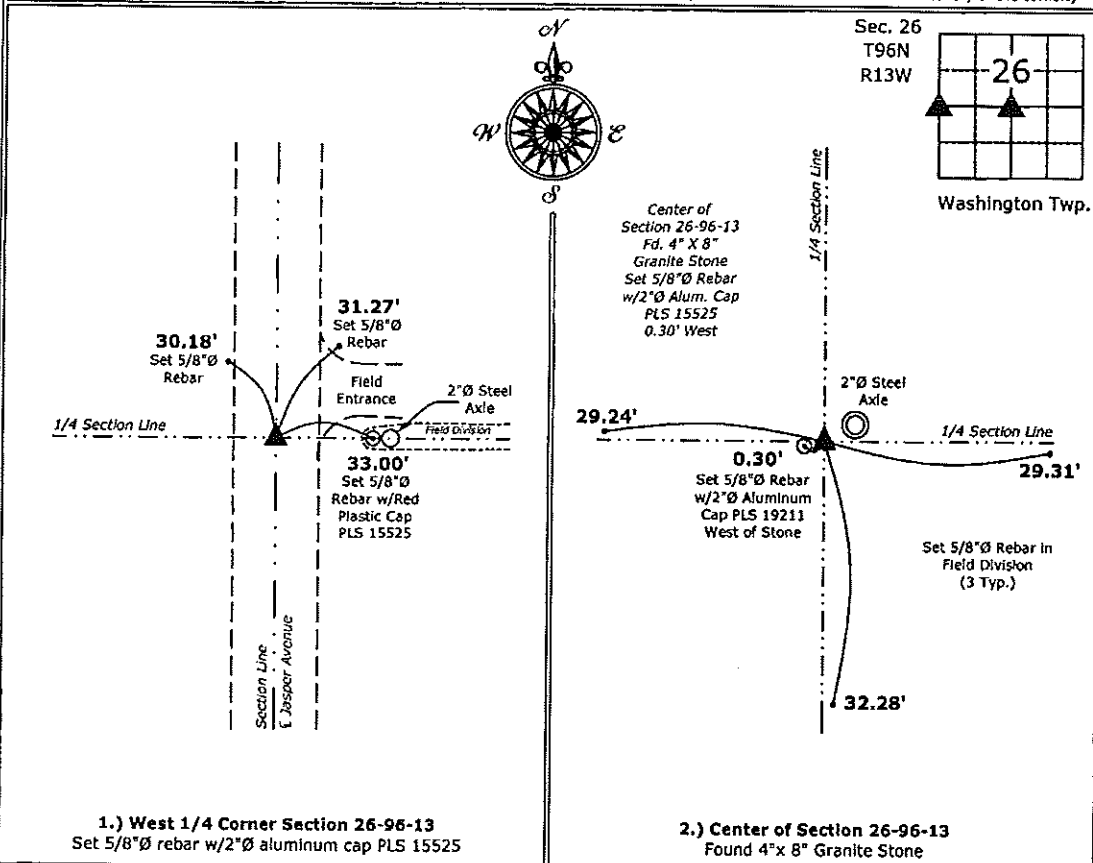
- 1 & 2  There is no certificate on file for this corner.  
 There are no longer three valid ties of record.  
 There are changes to reference ties of record.  
 There is change of monumentation of record.  
 To clarify description of record monument (ties).

Monument Description and Remarks:

- West 1/4 Corner:** Found 1" x 1/2" Flat Iron Bar with information from the County Engineer's office.
- Center of Section:** Found 4"x 8" Granite Stone west of a old Steel Axle at the intersection of possession line fences after comparing distances to adjacent corners in the Section it became apparent that the monument was authentic, therefore accepted the position as the Center of the Section. Set 5/8"Ø rebar with 2"Ø aluminum cap PLS 15525 0.30' West of monument as a witness marker.

#### PLAN - VIEW

(Show a minimum of three reference ties to durable physical objects, relevant monuments and physical conditions that will enable recovery of the corner.)



1.) West 1/4 Corner Section 26-96-13  
 Set 5/8"Ø rebar w/2"Ø aluminum cap PLS 15525

2.) Center of Section 26-96-13  
 Found 4"x 8" Granite Stone



I hereby certify that this land surveying document was prepared and the related survey work was performed by me or under my direct personal supervision and that I am a duly licensed Land Surveyor under the laws of the State of Iowa.  
*Paul R. Herold* 10-2-14  
 Paul R. Herold Date:  
 License number 15525  
 My license renewal date is December 31, 2014.  
 Sheets covered by this seal: Individual sheet only

List Corners to be Indexed			
Corners	Section	Twp.	Range
W 1/4	26	96	13
CTR	26	96	13

Project Number: 2014-152  
 FB: Chickasaw 6, Pgs. 50-51