

UNITED STATES PUBLIC LAND SURVEY CORNER CERTIFICATE

OF

Land Survey Monuments situated in Section 21, Township 96 North, Range 13 West, of the Fifth Principal Meridian, CHICKASAW County, Iowa. Previously recorded in NONE in County Recorder's Office.

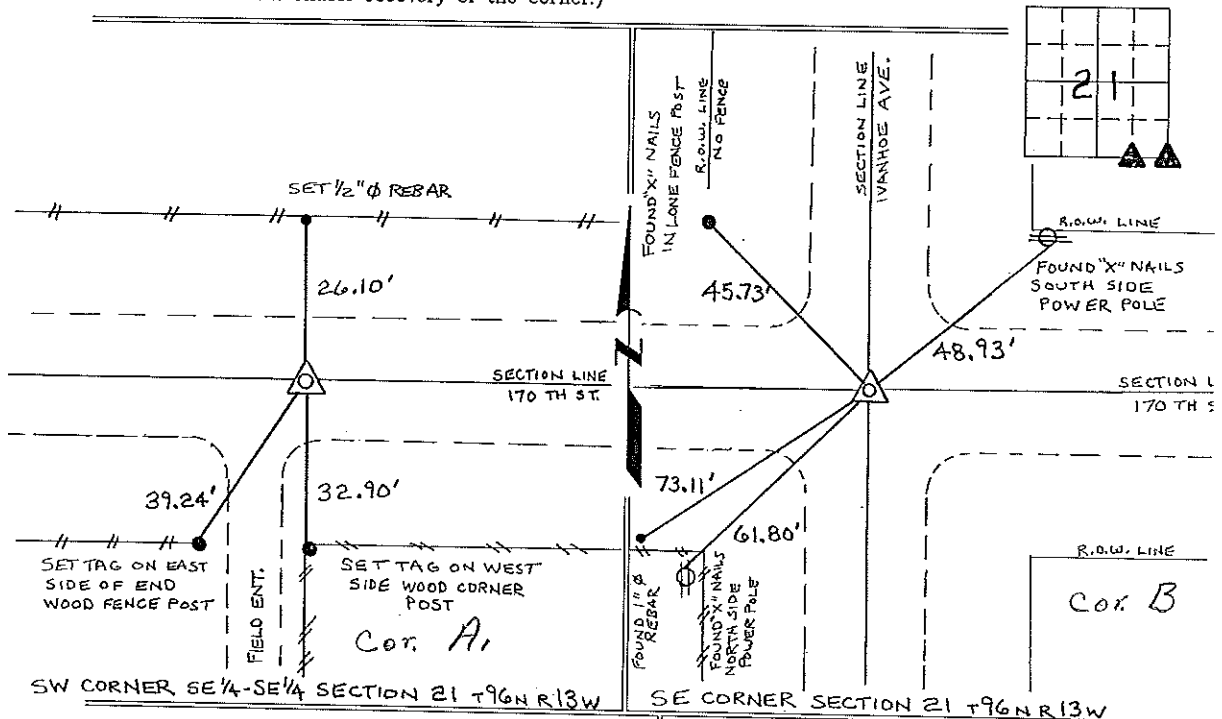
(book, page, document number, etc.)

(Show reason for preparing this certificate, the evidence and detailed procedures used in establishing the corner positions and monumentation found or placed.)

Monument Description and Remarks: SW CORNER SE 1/4-SE 1/4 SECTION 21 T 96 N R 13 W:  
FOUND 1/2" SQUARE TWISTED IRON BAR, FROM INFORMATION IN THE COUNTY ENGINEERS FIELD  
BOOK "WASHINGTON TWP. CORNER TIES".  
SE CORNER SECTION 21 T 96 N R 13 W: FOUND 5/8" Ø IRON PIN, FROM INFORMATION IN  
THE COUNTY ENGINEERS FIELD BOOK "WASHINGTON TWP CORNER TIES".

PLAN - VIEW

(Show a minimum of three reference ties to durable physical objects, relevant monuments and physical conditions that will enable recovery of the corner.)



I hereby certify that the survey work was completed and this certificate was prepared by me or under my direct personal supervision and that I am a duly registered land surveyor under the laws of the state of Iowa.

Signature: Lyle G. TeKippe  
 Lyle G. TeKippe

Date: 5-28-96 Reg. No. 7060  
 My Registration Renewal Date is December 31, 1996

Seal



List Corners to be Indexed			
Corners	Section	Twp.	Range
SW-SE-SE	21	96N	13W
Corner A, 21-96-13			
SE	21	96N	13W
Corner B-21-96-13			

*Placed in Book 6/18/96*