

UNITED STATES PUBLIC LAND SURVEY CORNER CERTIFICATE

OF

Land Survey Monuments situated in Section 21, Township 96 North, Range 13 West, of the Fifth Principal Meridian, CHICKASAW County, Iowa. Previously recorded in NONE in County Recorder's Office.

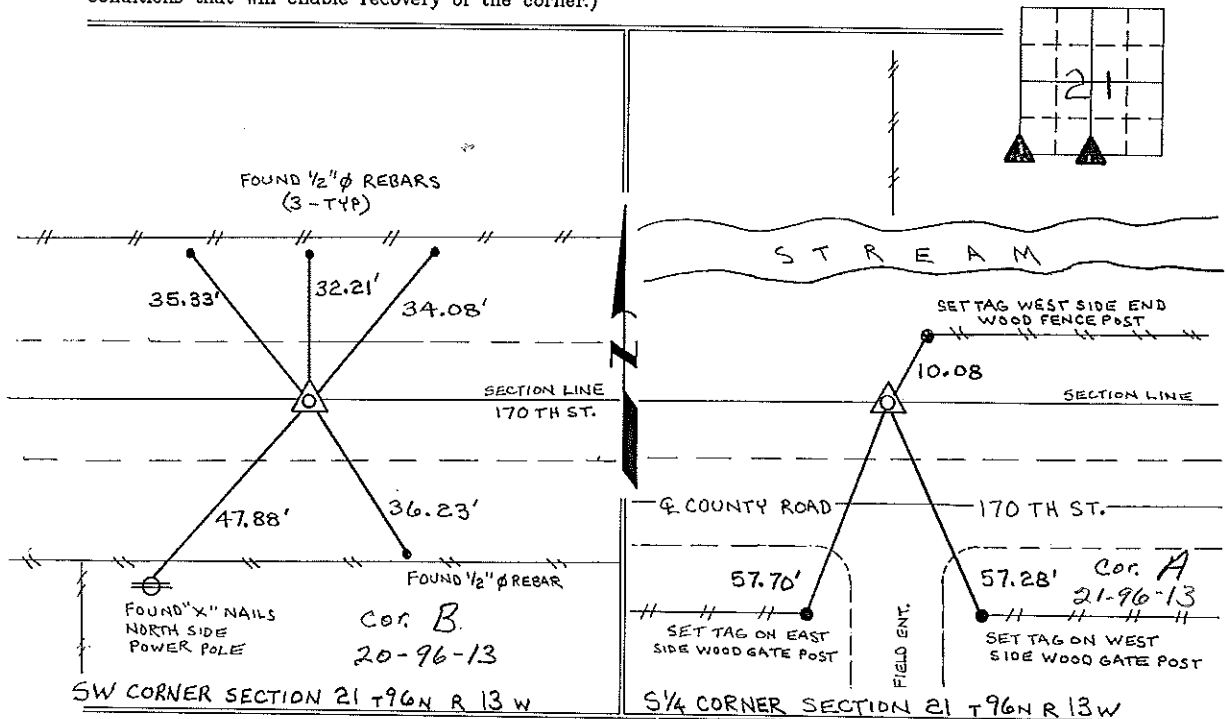
(book, page, document number, etc.)

(Show reason for preparing this certificate, the evidence and detailed procedures used in establishing the corner positions and monumentation found or placed.)

Monument Description and Remarks: SW CORNER SECTION 21 T96N R13W: FOUND 1" SQUARE IRON BAR MATCHING TIES IN THE COUNTY ENGINEERS FIELD BOOK "WASHINGTON TWP. CORNER TIES".  
S 1/4 CORNER SECTION 21 T96N R13W: SET 1/2" Ø REBAR w/cap 7060 BY INTERSECTING THE ALIGNMENT FROM THE SE CORNER TO THE SW COR. SE-SE AND FROM THE CENTER OF THE SECTION TO A POINT ON THE 1/4 SECTION LINE FENCE 45 FEET NORTH OF THE S 1/4 CORNER. CENTERLINE OF COUNTY ROAD (170 TH ST.) DOES NOT FOLLOW THIS SOUTH SECTION LINE.

PLAN - VIEW

(Show a minimum of three reference ties to durable physical objects, relevant monuments and physical conditions that will enable recovery of the corner.)



I hereby certify that the survey work was completed and this certificate was prepared by me or under my direct personal supervision and that I am a duly registered land surveyor under the laws of the state of Iowa.

Signature: Lyle G. TeKippe  
 Lyle G. TeKippe

Date: 5-28-96 Reg. No. 7060  
 My Registration Renewal Date is December 31, 1998

Seal



List Corners to be Indexed			
Corners	Section	Twp.	Range
SW	21	96N	13W
	corner B- 20-96-13		
S 1/4	21	96N	13W

*Corner A. 21-96-13*  
*Placed in Tie Book 5/18/96*