

Prepared by: Kyle A. Johnson Address: 1900 MEDICAL ARTS AVE S, SUITE 100 SARTELL, MN Phone: 1-888-937-5150

UNITED STATES PUBLIC LAND SURVEY CORNER CERTIFICATE FOR

Land survey monuments situated in Section 1, Township 96 NORTH
Range 13 WEST, of the Fifth Principal Meridian, CHICKASAW County, Iowa.

Previously Recorded in _____ in County Recorder's Office.

(Show reason for preparing this certificate, the evidence and detailed procedures used in establishing the corner positions and monumentation found or placed.)

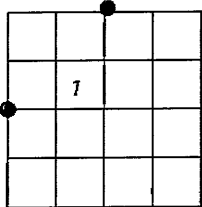
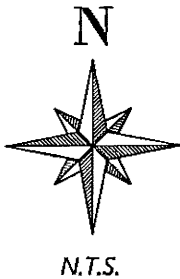
MONUMENT DESCRIPTION AND REMARKS:

NORTH QUARTER: Westwood Professional Services searched and found a large rock pile +/- 4 feet tall, observed no other occupation. Set 1/2" rebar with orange cap LS25725 at proportioned distance and bearing extension from Engineers tie book of Section 36 T97 R13 utilizing the North Quarter and Center of Section 36. Filing corner record as there is no certificate on file for this corner.

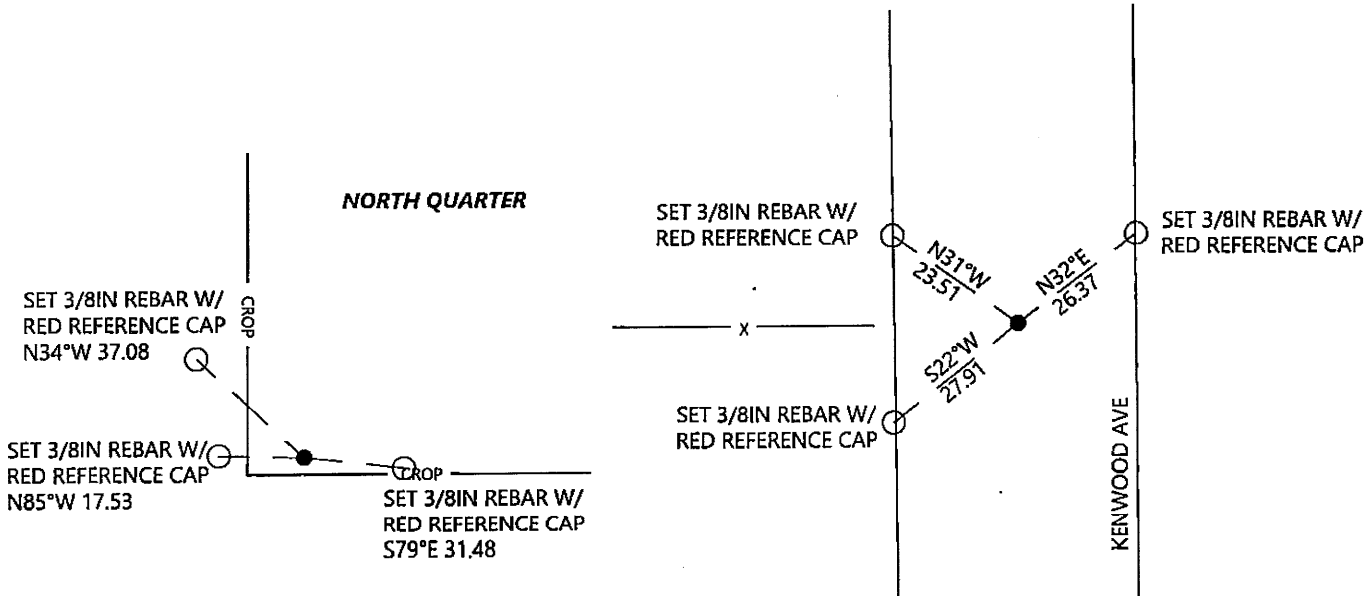
EAST QUARTER: Westwood Professional Services searched the area and found no monument. Dug for stone reference in 1960 engineer notes, without finding one. No previous ties were found as well. Set a 1/2" rebar with an orange LS 25725 cap on the section line angle per found monuments on 1971 Bert Hanson survey and online with fence to the west. This position fits the distance shown on the 1977 L.P. Erdman survey from the NE corner of Section 2 very well. It also fits the 1977 survey angle very well, however only occupation was found. Previous 1960 and 1971 records show corner on line with a fence to the west. Filing record due to missing monument.

PLAN - VIEW

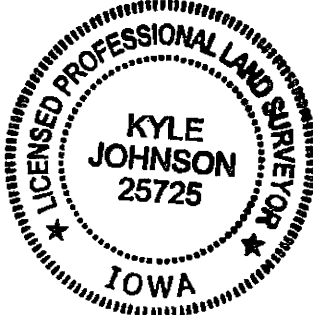
(Show a minimum of three reference ties to durable physical objects, relevant monuments and physical conditions that will enable recovery of the corner.)



EAST QUARTER



SEAL



I hereby certify that this land surveying document was prepared and the related survey work was performed by me or under my direct personal supervision and that I am a duly licensed Land Surveyor under the laws of the state of Iowa.

Signature: Kyle Johnson Date: 10/4/2022
Typed/Printed Name: Kyle A. Johnson
License Number: 25725
My license renewal date is December 31, 2022
Pages or sheets covered by this seal: THIS SHEET

Corners to be Indexed

Corners	Section	Twp.	Range
EQ	1	96	13
NQ	1	96	13