

Prepared by & Return to: Harold - Reicks Surveying, 10 East Main Street, New Hampton, IA 50659, Ph. 641-394-2735

**UNITED STATES PUBLIC LAND SURVEY CORNER CERTIFICATE**

Land Survey Monuments situated in Section 2, Township 96 North, Range 13 West of the Fifth Principal Meridian, Chickasaw County, Iowa. 1.) Previously recorded in Doc. #2003-0741 in the County Recorder's office. 2.) Not previously recorded in the County Recorder's office.

This certificate is being prepared in compliance with Iowa Code Chapter 355.11 because:

- There is no certificate on file for this corner.
- There are no longer three valid ties of record.
- There are changes to reference ties of record.
- There is change of monumentation of record.
- To clarify description of record monument (ties).

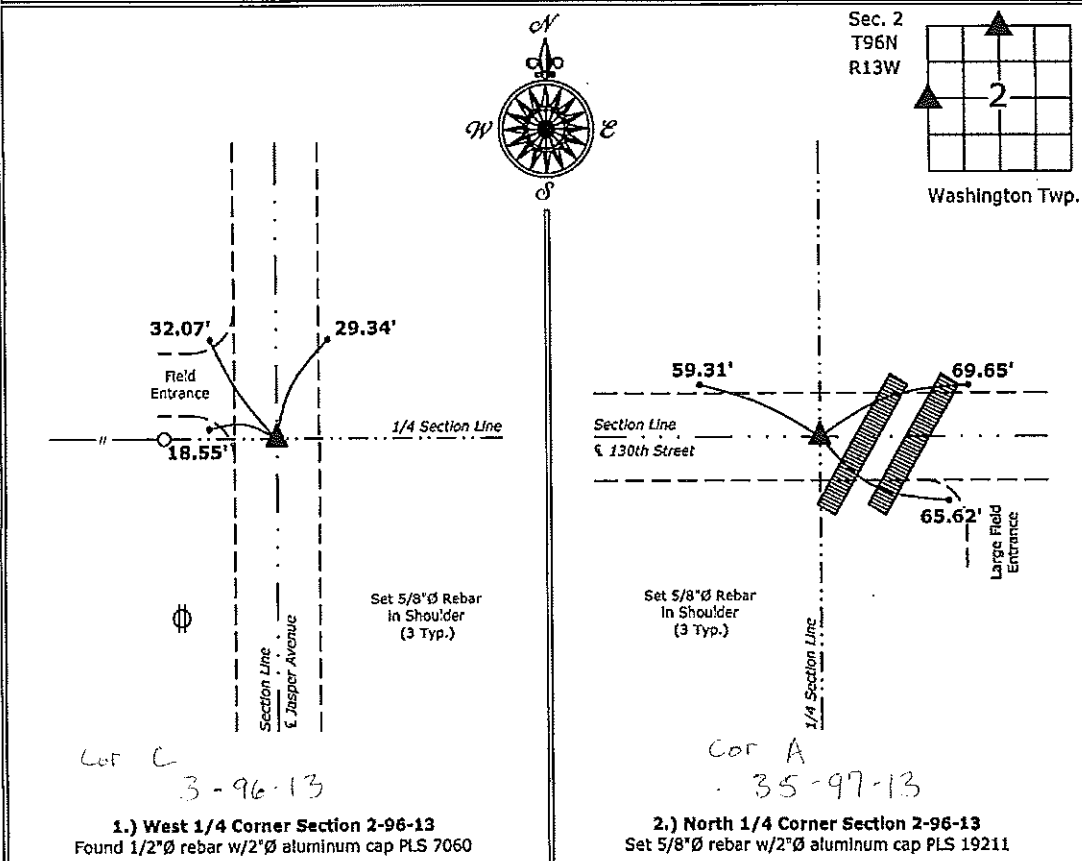
**Monument Description and Remarks:**

**1.) West 1/4 Corner:** Found 1/2"Ø rebar w/2"Ø aluminum cap PLS 7060 with information obtained from the previous Section Corner Certificate. Previous Section Corner Certificate stated (1/2"Ø rebar w/2"Ø aluminum cap PLS 15525).

**2.) North 1/4 Corner:** Set 5/8"Ø rebar w/2"Ø aluminum cap PLS 19211 by extending a line from the South 1/4 Corner through a North-South fence near the Center of Section and intersecting a line from the Northwest to the Northeast Corners of Section 2. There are no records of the perpetuation of a monument at this Corner.

**PLAN - VIEW**

(Show a minimum of three reference ties to durable physical objects, relevant monuments and physical conditions that will enable recovery of the corner.)



1.) West 1/4 Corner Section 2-96-13  
 Found 1/2"Ø rebar w/2"Ø aluminum cap PLS 7060

2.) North 1/4 Corner Section 2-96-13  
 Set 5/8"Ø rebar w/2"Ø aluminum cap PLS 19211



I hereby certify that this land surveying document was prepared by me or under my direct personal supervision and that I am a duly licensed Land Surveyor under the laws of the State of Iowa.

*Kirk D. Reicks* 11-27-13  
 Kirk D. Reicks Date:

License number 19211  
 My license renewal date is December 31, 2014.  
 Sheets covered by this seal: Individual sheet only

List Corners to be Indexed			
Corners	Section	Twp.	Range
W 1/4	2	96	13
N 1/4	2	96	13

Project Number: 2013-177  
 FB: Chickasaw 6, Pgs. 7-8