

Chickasaw Co. Recorder
 Cindy Messersmith
 Fee Book 2015-1680
 12/17/2015 @0915AM
 SCC: SEC COR CERT
 Book: Page: # Pages: 1
 Total Fees: \$7.00

PREPARED BY: North Star Land Surveyors LLC, 107 Pine Street, New Hampton, IA 50659, Phone : 641-330-6948

UNITED STATES PUBLIC LAND CORNER CERTIFICATE
OF:

Land Survey Monuments situated in Section 29, Township 96 North, Range 13 West of the Fifth Principal Meridian, Chickasaw County, Iowa. Previously recorded in W 1/4 Corner: bk 161 pg 235 E 1/4 Corner: none previous in Office of County Recorder.

(book, page, document number, etc.)

(Show reason for preparing this certificate, the evidence and detailed procedures used in establishing the corner positions and monumentation found or placed.)

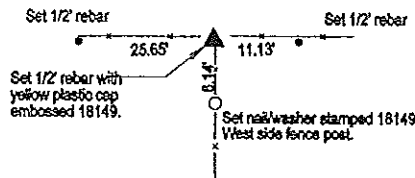
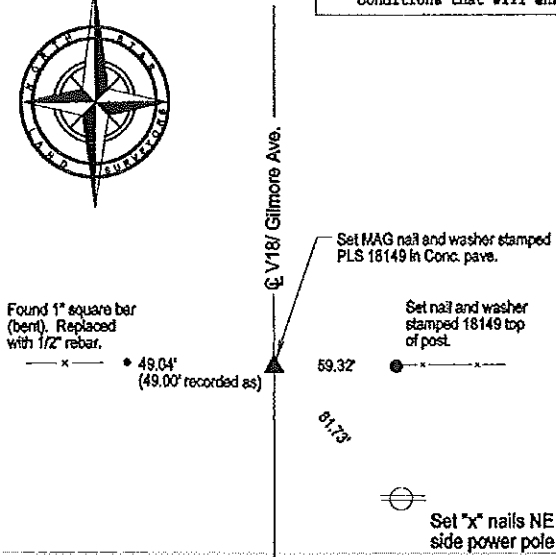
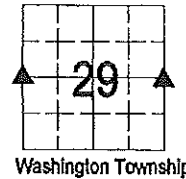
Monument Description and Remarks :

W 1/4 Corner Section 29 Twp. 96 Rng. 13 W.: Found 3/4" bar reference tie, West, per Certificate recorded in bk 161 pg 235, County Recorder. Did not find corner monumentation or any other reference ties. Certificate recorded in bk 161 page 233 (section 30) indicates the ESE 1/8 Corner was set midway between the SW Corner and E 1/4 Corner. Reset W 1/4 corner by extending line from SW Corner through said ESE 1/8 doubling measured distance. Corner falls 49.04 feet (record 49.00') from said found reference tie.
 Reason for recording: Per Iowa Administrative Code 193C-12.2(2)b and c., monumentation has changed.

E 1/4 Corner Section 29 Twp. 96 Rng. 13 W.: Dug and probed 3' deep at corner fence post. Did not find evidence of corner monumentation. Set 1/2" rebar with cap embossed 18149 at midpoint between SE Corner and NE Corner. E 1/4 Corner falls on North/South Fence app. 3 feet south of Corner fence post and on extended line of fence West.
 Reason for recording: Per Iowa Administrative Code 193C-12.2(2)d., new monument set for corner and no previous certificate.

PLAN -VIEW

(Show a minimum of three reference ties to durable physical objects, relevant monuments and physical conditions that will enable recovery of the corner.)

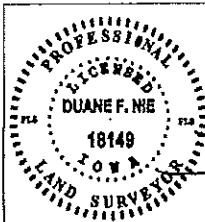


Cor C Sec 30-96-13

Cor C Sec 29-96-13

W 1/4 Corner Section 29 Twp. 96 Rng. 13 W.

E 1/4 Corner Section 29 Twp. 96 Rng. 13 W.



I hereby certify that this land surveying document was prepared and the related survey work was performed by me or under my direct personal supervision and that I am a duly Licensed Land Surveyor under the laws of the State of IOWA.
 Duane F. Nie License number 18149 Date 15, 2015
 My license renewal date is December 31, 2016
 Pages or sheets covered by this seal. This page only

List Corners to be Indexed			
Corner	Section	Township	Range
W 1/4 Cor.	29	96	13
E 1/4 Cor.	29	96	13

DOCUMENT No. 00052 FILED FOR RECORD THE 5th DAY OF JULY STATE OF IOWA, CHICKASAW COUNTY.
 RECORDING FEE \$ 6.00 19 96 AT 8:35 DEED
 TRANSFER FEE \$ --- O'CLOCK A. M. BOOK 161 PAGE 235 By Leitha N. Ross Recorder
 LEITHA N. ROSS Deputy

Prepared by: Erdman Engineering P.C. 708 Commerce Drive, P.O. Box 246, Decorah Iowa, 52101
 Phone (319)382-4194, Fax (319)382-3623

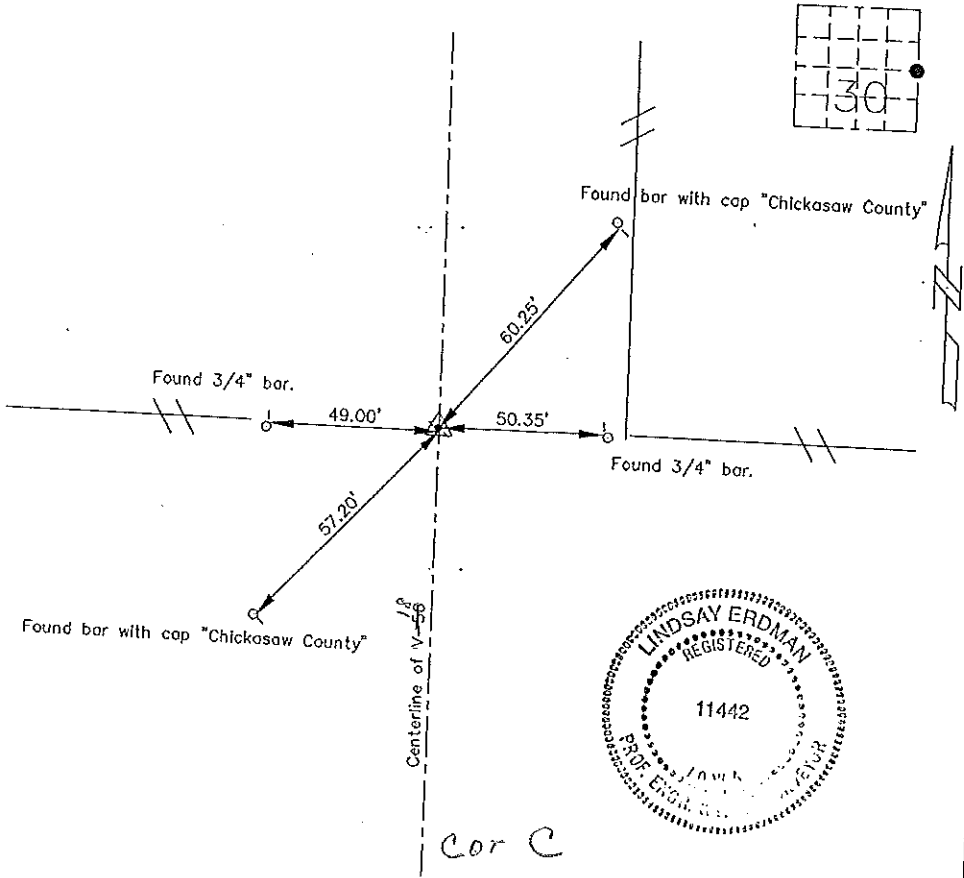
United States Public Land Survey Corner Certificate of

Land Survey Monuments situated in Section 30 Township 96 Range 13 of the Fifth Principle Meridian,
Chickasaw County, Iowa. Previously recorded in does not apply in County Recorders Office.

(Show reason for preparing this certificate, the evidence and detailed procedures used in establishing the
 corner positions and monumentation found or placed.)

Monument Description and Remarks: This certificate is prepared in accordance with Section 355.11
 of the 1995 Code of Iowa. No previous certificate has been filed for this corner location. Based on
 County Engineer's Reference ties we found two 3/4" bars and two bars with caps with writing on
 on top that read "Chickasaw County" all used as tie markers. From these ties we found a P.K. nail
 in the PCC pavement at the E 1/4 corner of Sec. 30-96-13.

(Show a minimum of three reference ties to durable physical objects, relevant
 monuments and physical conditions that will enable recovery of the corner.)



cor C

I hereby certify that the survey work was completed
 and this certificate was prepared by me or under by
 direct supervision and that I am a duly registered
 land surveyor under the laws of the State of Iowa.

Signature: Lindsay Erdman
 Lindsay Erdman, P.E. and L.S.
 Date: 7/2/96 Reg. No. 11442

My license will be renewed January 1, 1997

Corners	List Corners to be Indexed		
	Section	Twp.	Range
E 1/4	30	96	13