

DOCUMENT No. **00053** FILED FOR RECORD THE **5th** DAY OF **July** STATE OF IOWA, CHICKASAW COUNTY.  
 RECORDING FEE \$ **6.00** 19 **96** AT **8:35** By *Leitha N. Ross* Recorder  
 TRANSFER FEE \$ **---** O'CLOCK **A.** H. BOOK **161 Deed** PAGE **236** LEITHA N. ROSS Deputy

Prepared by: Erdman Engineering P.C. 708 Commerce Drive, P.O. Box 246, Decorah Iowa, 52101  
 Phone (319)382-4194, Fax (319)382-3623

## United States Public Land Survey Corner Certificate of

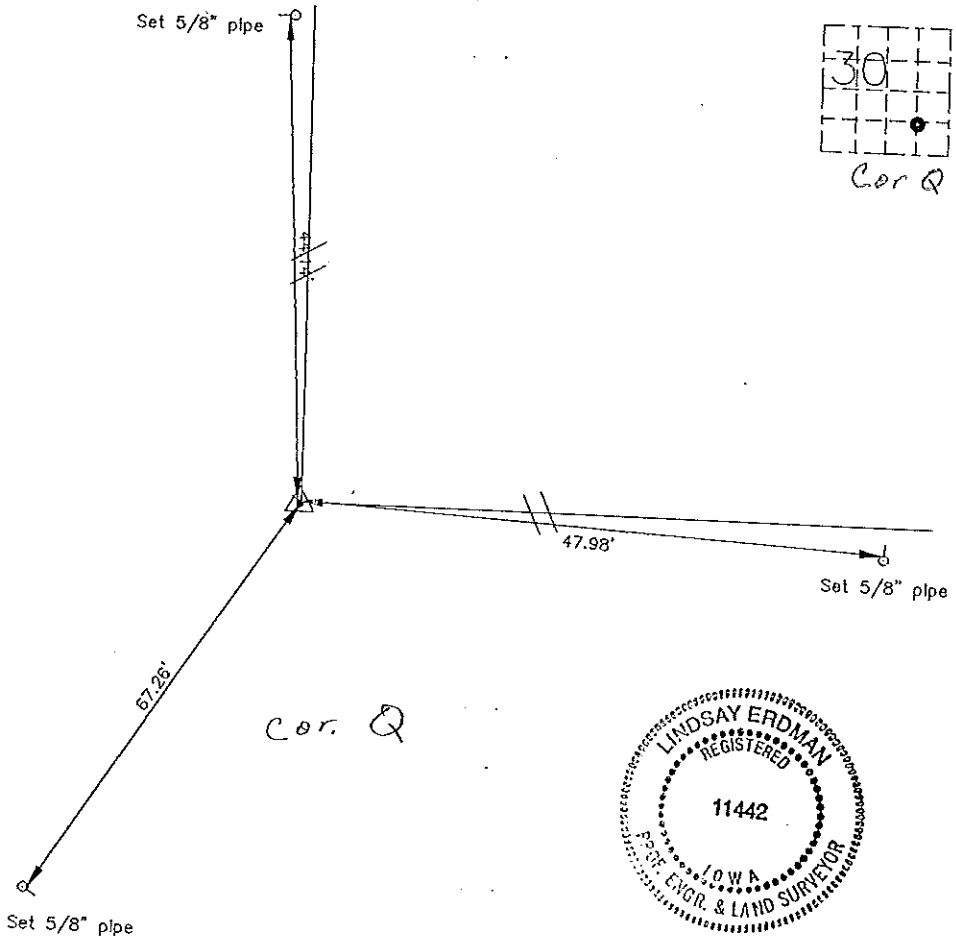
Land Survey Monuments situated in Section, 30 Township, 96 Range, 13 of the Fifth Principle Meridian,  
 Chickasaw County, Iowa. Previously recorded in does not apply in County Recorders Office.

(Show reason for preparing this certificate, the evidence and detailed procedures used in establishing the  
 corner positions and monumentation found or placed.)

Monument Description and Remarks: This certificate is prepared in accordance with Section 355.11  
 of the 1995 Code of Iowa. No previous certificate has been filed for this corner location. Based on  
 plat recorded in Bk. 108 pg. 220 in the Chickasaw County Recorder's Office we set a 1/2" bar with  
 cap RLS #11442 at an existing fence corner with property line fences running North and East at the  
 SE 1/16 corner of Sec. 30-96-13.

Plan-View

(Show a minimum of three reference ties to durable physical objects, relevant monuments and physical conditions that will enable recovery of the corner.)



I hereby certify that the survey work was completed and this certificate was prepared by me or under my direct supervision and that I am a duly registered land surveyor under the laws of the State of Iowa.

Signature: *Lindsay Erdman*  
 Lindsay Erdman, P.E. and L.S.  
 Date: 7/2/96 Reg. No. 11442  
 My license will be renewed January 1, 1997

List Corners to be Indexed			
Corners	Section	Twp.	Range
SE 1/16	30	96	13