

X
 c
 M
 S
 DOCUMENT No. 00050 FILED FOR RECORD THE 5th DAY OF JULY 1996 AT 8:35 O'CLOCK A.M. BOOK 161 DEED PAGE 233 STATE OF IOWA, CHICKASAW COUNTY, LEITHA N. ROSS, Recorder, Deputy

Prepared by: Erdman Engineering P.C. 708 Commerce Drive, P.O. Box 246, Decorah Iowa, 52101
 Phone (319)382-4194, Fax (319)382-3623

United States Public Land Survey Corner Certificate

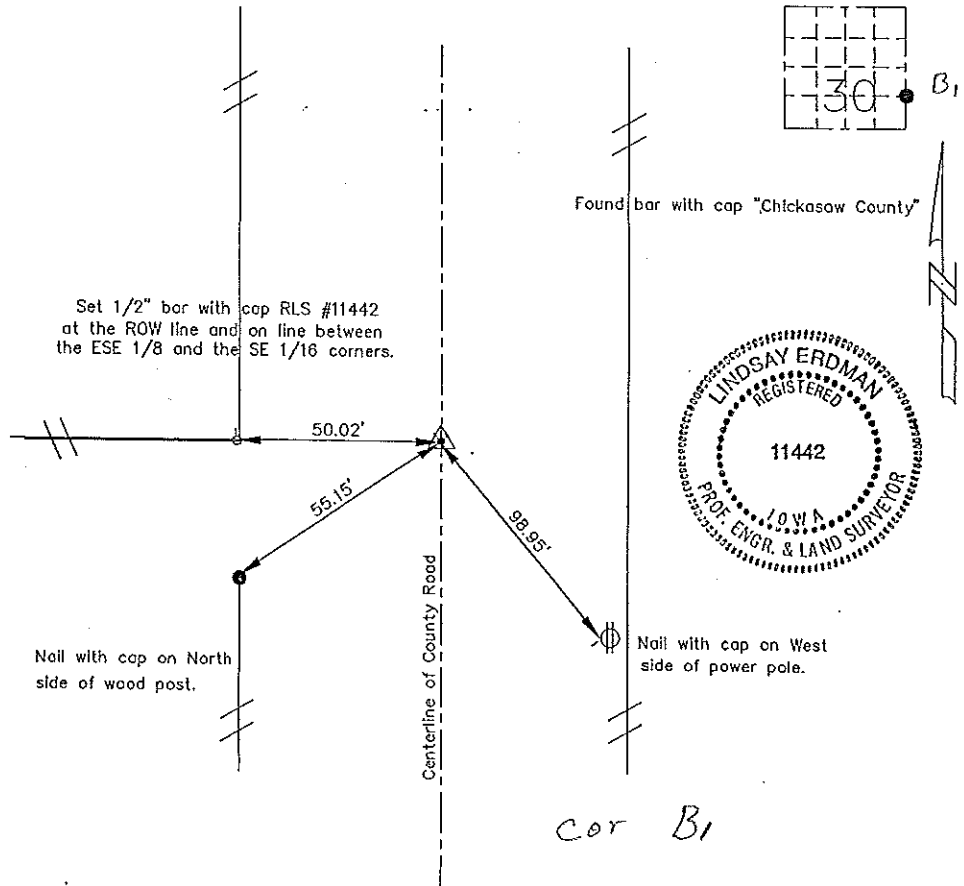
of

Land Survey Monuments situated in Section 30 Township 96 Range 13 of the Fifth Principle Meridian, Chickasaw County, Iowa. Previously recorded in does not apply in County Recorders Office.

(Show reason for preparing this certificate, the evidence and detailed procedures used in establishing the corner positions and monumentation found or placed.)

Monument Description and Remarks: This certificate is prepared in accordance with Section 355.11 of the 1995 Code of Iowa. No previous certificate has been filed for this corner location. We did not find any records showing the ESE 1/8 corner as being set or tied out. No existing evidence of monumentation was found at the corner location. We found monumentation at the E 1/4 and we set monumentation at the SE corner from county ties. We cut an "X" in the PCC pavement on line and midway between the E 1/4 and the SE corner at the ESE 1/8 corner of Sec.30-96-13.

Plan-View
 (Show a minimum of three reference ties to durable physical objects, relevant monuments and physical conditions that will enable recovery of the corner.)



I hereby certify that the survey work was completed and this certificate was prepared by me or under by direct supervision and that I am a duly registered land surveyor under the laws of the State of Iowa.

Signature Lindsay Erdman
 Lindsay Erdman, P.E. and L.S.
 Date: 7/2/96 Reg. No. 11442

My license will be renewed January 1, 1997

Corners	Section	Twp.	Range
ESE 1/8	30	96	13