

Prepared by & Return to: Herold - Recks Surveying, 10 East Main Street, New Hampton, IA 50659, Ph. 641-394-2725

### UNITED STATES PUBLIC LAND SURVEY CORNER CERTIFICATE

Land Survey Monuments situated in Section 19, Township 96 North, Range 13 West of the Fifth Principal Meridian, Chickasaw County, Iowa. 1.) Previously recorded in Bk. 168, Pg. 241 in the County Recorder's office. 2.) Not previously recorded in the County Recorder's office.

This certificate is being prepared in compliance with Iowa Code Chapter 355.11 because:

- 2 There is no certificate on file for this corner.
- 1 There are no longer three valid ties of record.
- There are changes to reference ties of record.
- There is change of monumentation of record.
- To clarify description of record monument (ties).

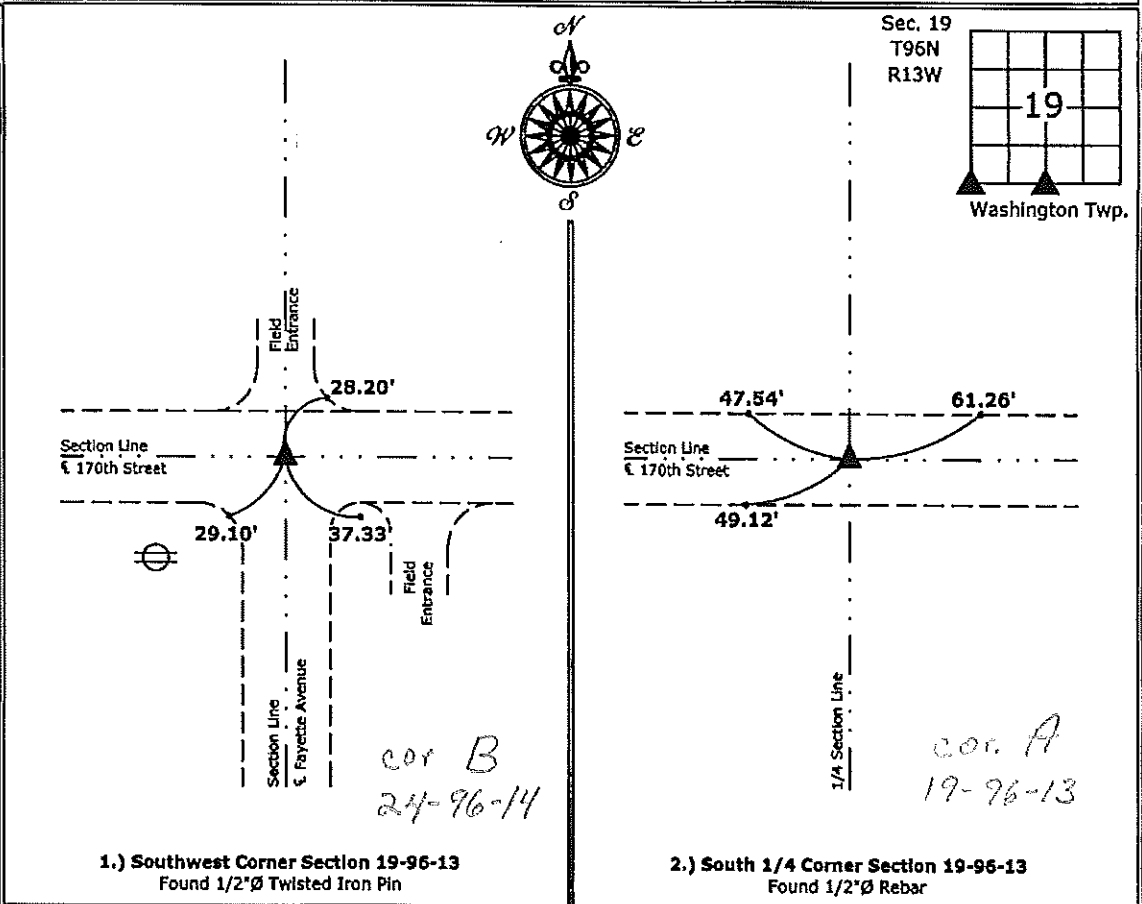
Monument Description and Remarks:

1.) **Southwest Corner:** Found 1/2"Ø Twisted Iron Pin from information obtained from previous Section Corner Certificate, ties were inadequate to recover corner, established new ties in order to update corner.

2.) **South 1/4 Corner:** Found 1/2"Ø Rebar from information obtained from County Engineer's office, in field book Lower Washington Township Section 19 Corner "A".

### PLAN - VIEW

(Show a minimum of three reference ties to durable physical objects, relevant monuments and physical conditions that will enable recovery of the corner.)



I hereby certify that this land surveying document was prepared and the related survey work was performed by me or under my direct personal supervision and that I am a duly licensed Land Surveyor under the laws of the State of Iowa.

*Paul R. Herold* 9-18-12  
Paul R. Herold Date:

License number 15525  
My license renewal date is December 31, 2012.  
Sheets covered by this seal: Individual sheet only

List Corners to be Indexed			
Corners	Section	Twp.	Range
SW	19	96	13
S 1/4	19	96	13

Project Number: 2012-151  
FB: Chickasaw Co. 4, Pgs. 55