

Section 19-96-13
As referred to in
Engr. Trc Book.

Chickasaw Co. Recorder
Cindy Messersmith
Fee Book 2007-1452
07/13/2007 @0132PM
SCC SEC COR CERT
Book: Page: # Pages: 1
Total Fees: \$7.00

PREPARED BY: North Star Land Surveyors, 107 Pine Street, New Hampton, IA 50659, Phone : 641-394-3449

UNITED STATES PUBLIC LAND CORNER CERTIFICATE

OF: 19

Land Survey Monuments situated in Section 20, Township 96 North, Range 13 West of the Fifth Principal Meridian, Chickasaw County, Iowa. Previously recorded in none in Office of County Recorder.

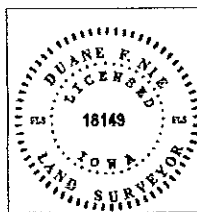
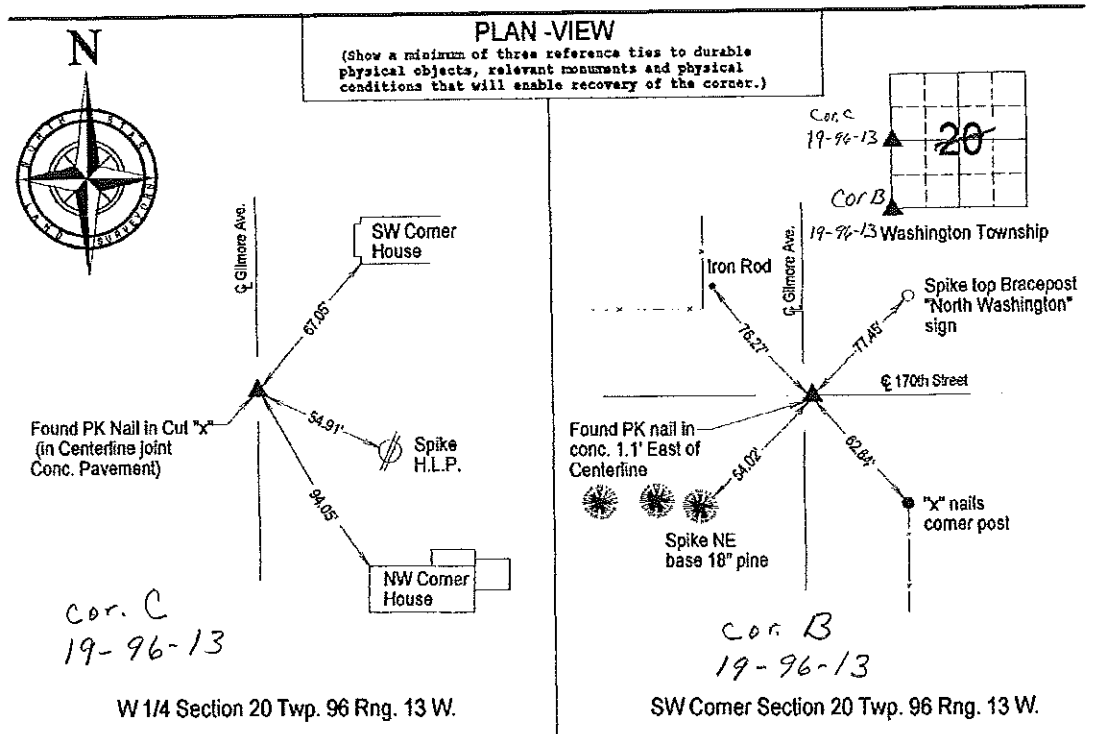
(book, page, document number, etc.)

(Show reason for preparing this certificate, the evidence and detailed procedures used in establishing the corner positions and monumentation found or placed.)

Monument Description and Remarks :

W 1/4 Section 20 Twp. 96 Rng. 13 W. : Found PK nail in cut "x". Measurement to houses match reference ties in County Engineer's fieldbook. New distance to Spike in H.L.P.

SW Corner Section 20 Twp. 96 Rng. 13 W. : Found PK nail in Conc. Pavement per County Engineer's fieldbook. Set new tie in top "North Washington" sign bracepost.



I hereby certify that this land surveying document was prepared and the related survey work was performed by me or under my direct personal supervision and that I am a duly LICENSED LAND SURVEYOR under the laws of the State of IOWA.
Duane F. Nie July 11, 2007
Duane F. Nie License number 18149
My license renewal date is December 31, 2008
Pages or sheets covered by this seal. This page only

List Corners to be Indexed			
Corner	Section	Township	Range
W 1/4	20	96	13
SW	20	96	13

Section 20-96-13
As referred to in
Engr. Tie Book.

TEKIPPE ENGINEERING, P.C., 128 South Vine Street, West Union, Iowa 52175 Phone (319) 422-5131

UNITED STATES PUBLIC LAND SURVEY CORNER CERTIFICATE

OF 20

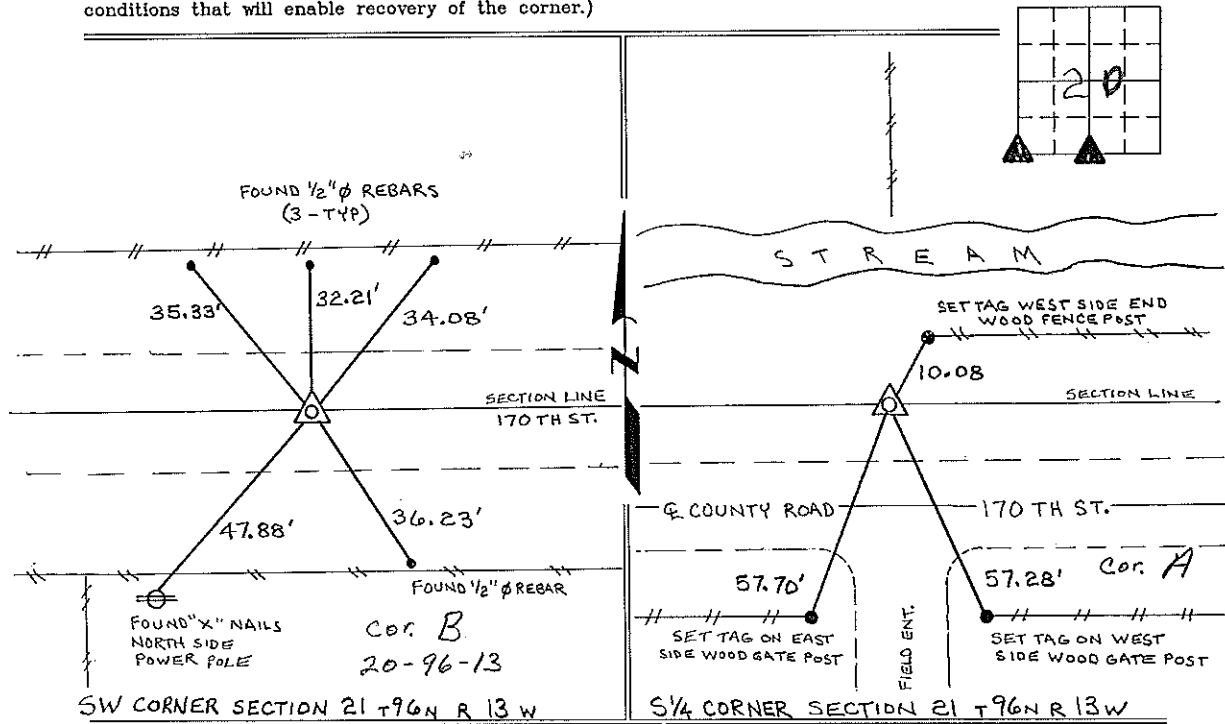
Land Survey Monuments situated in Section 21, Township 96 North, Range 13 West, of the Fifth Principal Meridian, CHICKASAW County, Iowa. Previously recorded in NONE in County Recorder's Office.

(Show reason for preparing this certificate, the evidence and detailed procedures used in establishing the corner positions and monumentation found or placed.)

Monument Description and Remarks: SW CORNER SECTION 21 T96N R13W: FOUND 1" SQUARE IRON BAR MATCHING TIES IN THE COUNTY ENGINEERS FIELD BOOK "WASHINGTON TWP. CORNER TIES".
S 1/4 CORNER SECTION 21 T96N R13W: SET 1/2" Ø REBAR w/CAP 7060 BY INTERSECTING THE ALIGNMENT FROM THE SE CORNER TO THE SW COR. SE-SE AND FROM THE CENTER OF THE SECTION TO A POINT ON THE 1/4 SECTION LINE FENCE 45 FEET NORTH OF THE S 1/4 CORNER. CENTERLINE OF COUNTY ROAD (170 TH ST.) DOES NOT FOLLOW THIS SOUTH SECTION LINE.

PLAN - VIEW

(Show a minimum of three reference ties to durable physical objects, relevant monuments and physical conditions that will enable recovery of the corner.)



I hereby certify that the survey work was completed and this certificate was prepared by me or under my direct personal supervision and that I am a duly registered land surveyor under the laws of the state of Iowa.

Signature: Lyle G. Tekippe
Lyle G. Tekippe
Date: 5-28-96 Reg. No. 7080
My Registration Renewal Date is December 31, 1998

Seal



Corners	Section	Twp.	Range
SW	21	96N	13W
	Corner B- 20-96-13		
S 1/4	21	96N	13W

Corner A. 21-96-13

Placed in Tie Book
6/18/96