

UNITED STATES PUBLIC LAND SURVEY CORNER CERTIFICATE

OF

Land Survey Monuments situated in Section 31, Township 96 North, Range 13 West, of the Fifth Principal Meridian, CHICKASAW County, Iowa.

Previously recorded in none in County Recorder's Office.  
(book, page, document number, etc.)

(Show reason for preparing this certificate, the evidence and detailed procedures used in establishing the corner positions and monumentation found or placed.)

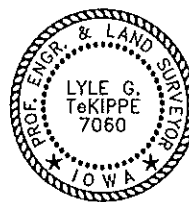
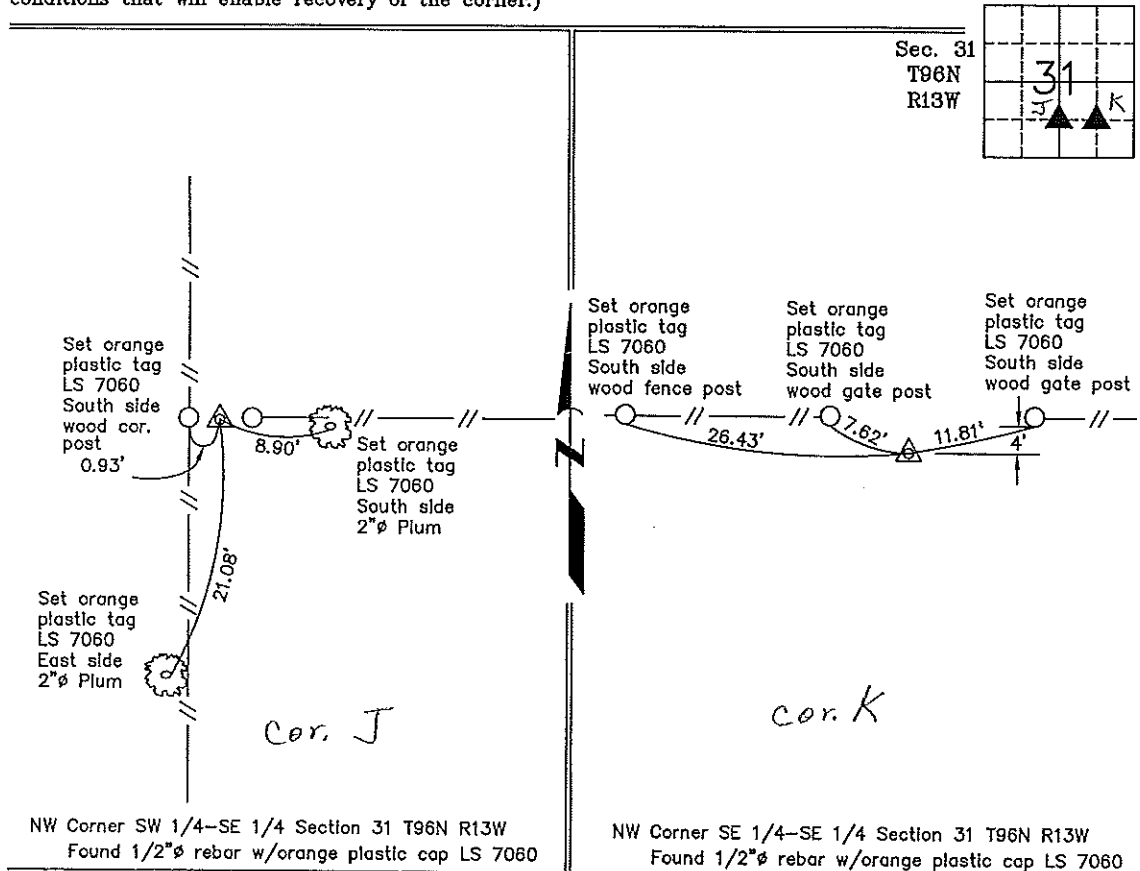
Monument Description and Remarks: NW Corner SW 1/4-SE 1/4 Section 31 T96N R13W:  
Found 1/2"Ø rebar w/orange plastic cap LS 7060.

NW Corner SE 1/4-SE 1/4 Section 31 T96N R13W: Found 1/2"Ø rebar w/orange plastic cap LS 7060.

**NOTE:** Both corners were found with information obtained from a Survey and Plat made by Lyle G. TeKippe, recorded in the Chickasaw County Recorder's Office on November 17, 1987, in Book 139, Pages 295-296.

PLAN - VIEW

(Show a minimum of three reference ties to durable physical objects, relevant monuments and physical conditions that will enable recovery of the corner.)



I hereby certify that this land surveying document was prepared and the related survey work was performed by me or under my direct personal supervision and that I am a duly licensed Land Surveyor under the laws of the State of Iowa.

*Lyle G. TeKippe* 3-5-99  
Lyle G. TeKippe Date  
License number 7060  
My license renewal date is December 31, 2000.  
Sheets covered by this seal: Individual

List Corners to be Indexed			
Corners	Section	Twp.	Range
NW-SW-SE <i>J</i>	31	96N	13W
<i>Cor X</i>	31-96-	13	
NW-SE-SE	31 <i>K</i>	96N	13W
<i>Corners X</i>	31-96-	13	