

UNITED STATES PUBLIC LAND SURVEY CORNER CERTIFICATE

OF

Land Survey Monuments situated in Section 31, Township 96 North, Range 13 West, of the Fifth Principal Meridian, CHICKASAW County, Iowa. Previously recorded in none in County Recorder's Office.
(book, page, document number, etc.)

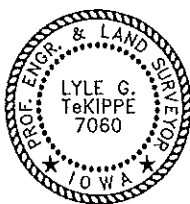
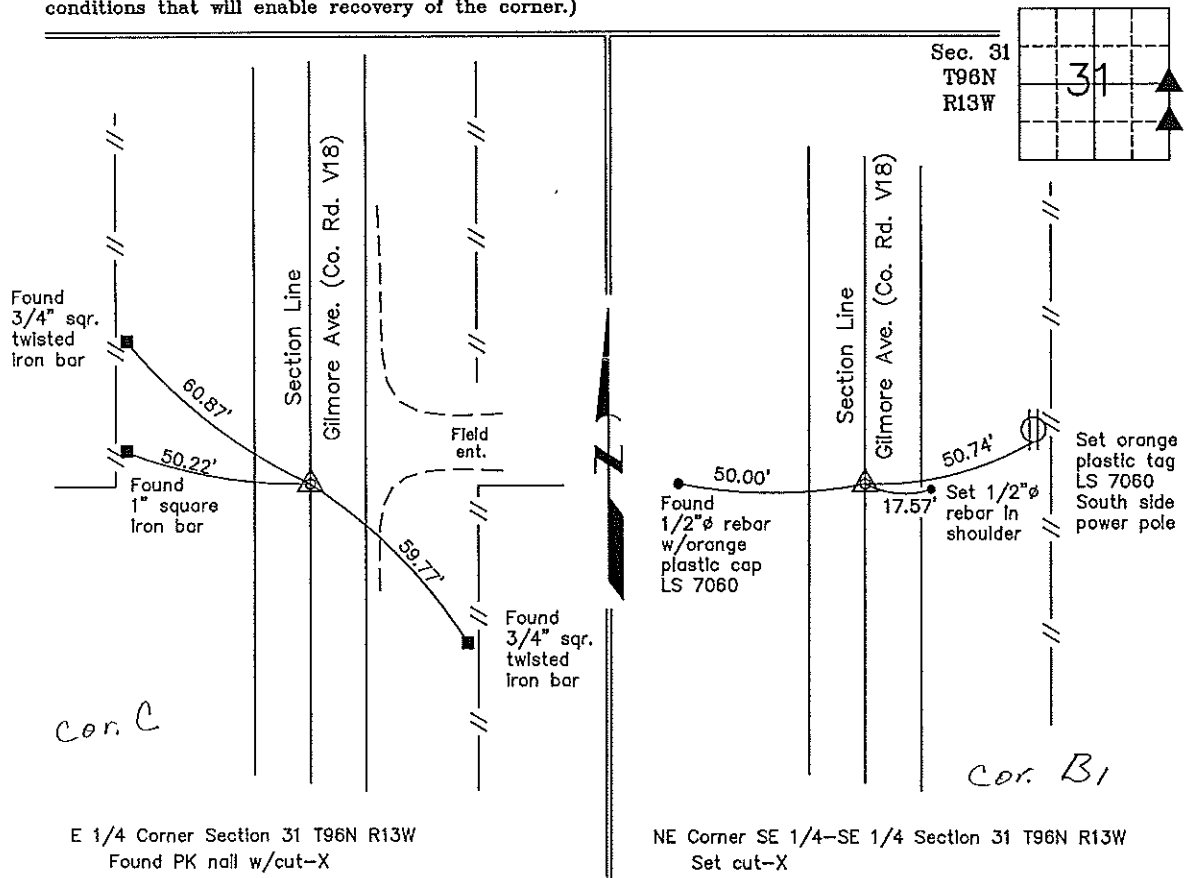
(Show reason for preparing this certificate, the evidence and detailed procedures used in establishing the corner positions and monumentation found or placed.)

Monument Description and Remarks: E 1/4 Corner Section 31 T96N R13W: Found PK nail w/cut-X with information obtained from the Chickasaw County Engineer's Office in the Field Book for Washington Township Corner Ties, Section 31, Corner "C".

NE Corner SE 1/4-SE 1/4 Section 31 T96N R13W: Set cut-X equidistant and on line between the SE Corner and the E 1/4 Corner of Section 31.

PLAN - VIEW

(Show a minimum of three reference ties to durable physical objects, relevant monuments and physical conditions that will enable recovery of the corner.)



I hereby certify that this land surveying document was prepared and the related survey work was performed by me or under my direct personal supervision and that I am a duly licensed Land Surveyor under the laws of the State of Iowa.

Lyle G. TeKippe 3-5-99
Lyle G. TeKippe Date
License number 7060
My license renewal date is December 31, 2000.
Sheets covered by this seal: Individual

List Corners to be Indexed

Corners	Section	Twp.	Range
---------	---------	------	-------

E 1/4	31	96N	13W
Corners C	31-96-13		
NE-SE-SE	31	96N	13W

Cor B1 31-96-13
Placed in the book 3/8/99