

Prepared by & Return to Herold - Recks Surveying, 10 East Main Street, New Hampton, IA 50652, Ph. 641-394-2725

UNITED STATES PUBLIC LAND SURVEY CORNER CERTIFICATE

Land Survey Monuments situated in Section **32**, Township **96** North, Range **13** West of the Fifth Principal Meridian, **Chickasaw County, Iowa**. **1.)** Previously recorded in **Bk. 171, Pg. 3** in the County Recorder's office. **2.)** Not previously recorded in the County Recorder's office.

This certificate is being prepared in compliance with Iowa Code Chapter 355.11 because:

- 2 There is no certificate on file for this corner.
- There are no longer three valid ties of record.
- There are changes to reference ties of record.
- 1 There is change of monumentation of record.
- To clarify description of record monument (ties).

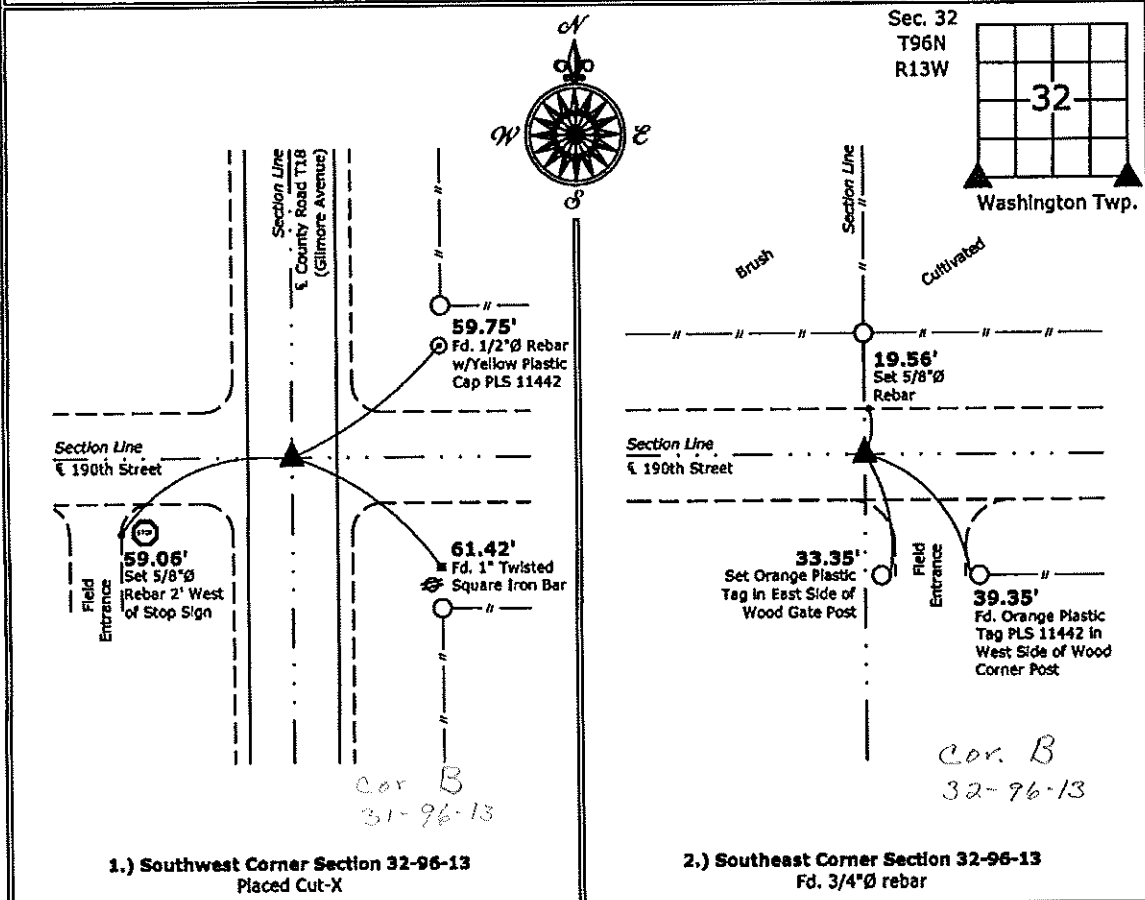
Monument Description and Remarks:

1.) Southwest Corner: Placed Cut-X in Concrete Paving from information obtained from a Survey and Plat made by Lyle G. TeKippe, recorded November 17, 1987, in Book 139, Pages 295-296, and another made by Lyle G. TeKippe, recorded May 12, 2000, in Document #2000-0848, on file in the Chickasaw County Recorder's office, New Hampton, Iowa.

2.) Southeast Corner: Found 3/4"Ø rebar from information obtained from a Survey and Plat made by Lindsay Erdman on January 28, 2004, on file in Document #2004-0293, on file in the Chickasaw County Recorder's office, New Hampton, Iowa.

PLAN - VIEW

(Show a minimum of three reference ties to durable physical objects, relevant monuments and physical conditions that will enable recovery of the corner.)



1.) Southwest Corner Section 32-96-13
Placed Cut-X

2.) Southeast Corner Section 32-96-13
Fd. 3/4"Ø rebar



I hereby certify that this land surveying document was prepared and the related survey work was performed by me or under my direct personal supervision and that I am a duly licensed Land Surveyor under the laws of the State of Iowa.

Paul R. Herold 5-2-13
 Paul R. Herold Date:

License number 15525
 My license renewal date is December 31, 2014.
 Sheets covered by this seal: Individual sheet only

List Corners to be Indexed			
Corners	Section	Twp.	Range
SW	32	96	13
SE	32	96	13

Project Number: 2013-071

FB: Chickasaw County 5, Pgs. 42-43

UNITED STATES PUBLIC LAND SURVEY CORNER CERTIFICATE

OF

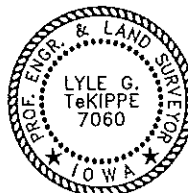
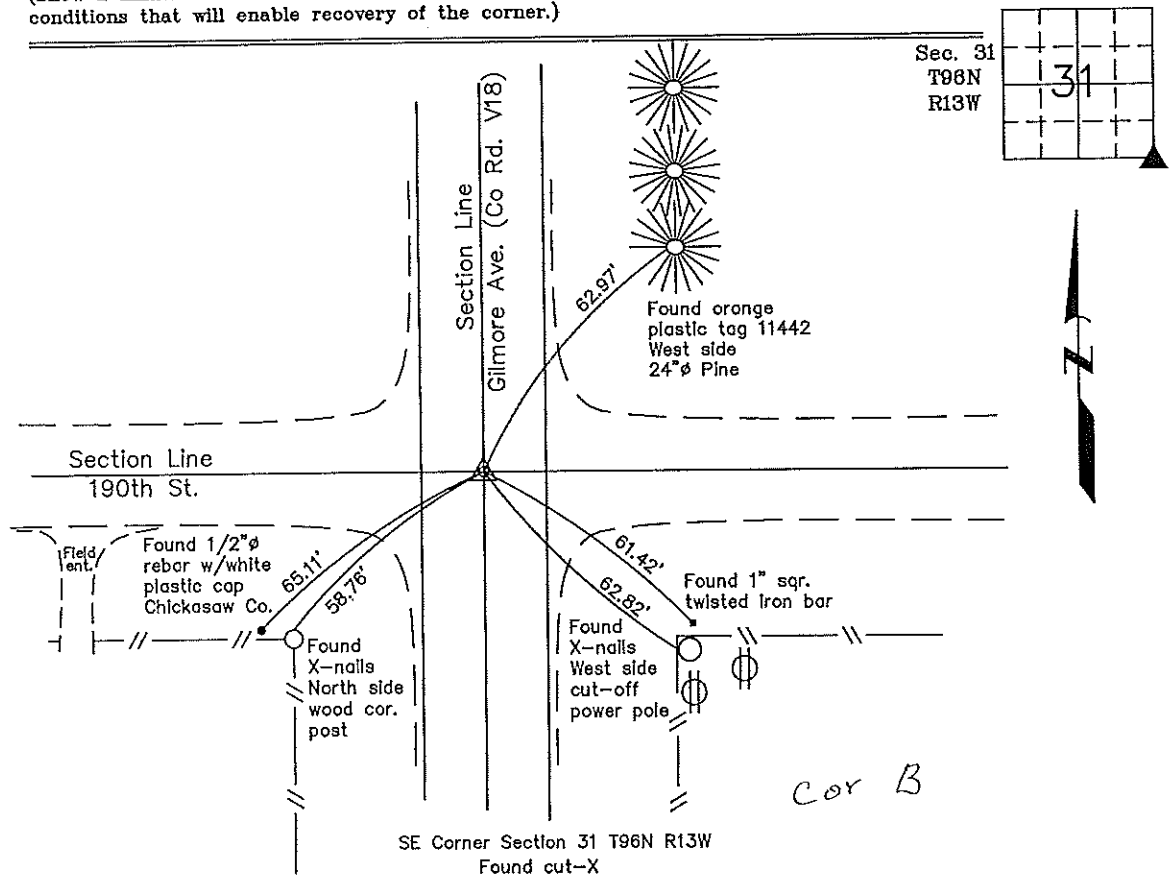
Land Survey Monuments situated in Section 31, Township 96 North, Range 13 West, of the Fifth Principal Meridian, CHICKASAW County, Iowa. Previously recorded in none in County Recorder's Office.
(book, page, document number, etc.)

(Show reason for preparing this certificate, the evidence and detailed procedures used in establishing the corner positions and monumentation found or placed.)

Monument Description and Remarks: SE Corner Section 31 T96N R13W: Found cut-X with information obtained from the Chickasaw County Engineer's Office in the Field Book for Washington Township Corner Ties, Section 31, Corner "B".

PLAN - VIEW

(Show a minimum of three reference ties to durable physical objects, relevant monuments and physical conditions that will enable recovery of the corner.)



I hereby certify that this land surveying document was prepared and the related survey work was performed by me or under my direct personal supervision and that I am a duly licensed Land Surveyor under the laws of the State of Iowa.

Lyle G. TeKippe 3-5-99
 Lyle G. TeKippe Date
 License number 7060
 My license renewal date is December 31, 2000.
 Sheets covered by this seal: Individual

List Corners to be Indexed			
Corners	Section	Twp.	Range
SE	31	96N	13W

*Corner B 31-96-13
 Placed in the book 3/8/99*