

Section 30-96-13
 As referred to in
 Eng. Tic Book

2007-1910

PREPARED BY: BRIAN J. DIEHL LS 13644 WHKS & CO. 1412 6th ST. S.W. MASON CITY, IOWA 50401 -- (641) 423-8271

SLSI 9-90

UNITED STATES PUBLIC LAND SURVEY CORNER CERTIFICATE

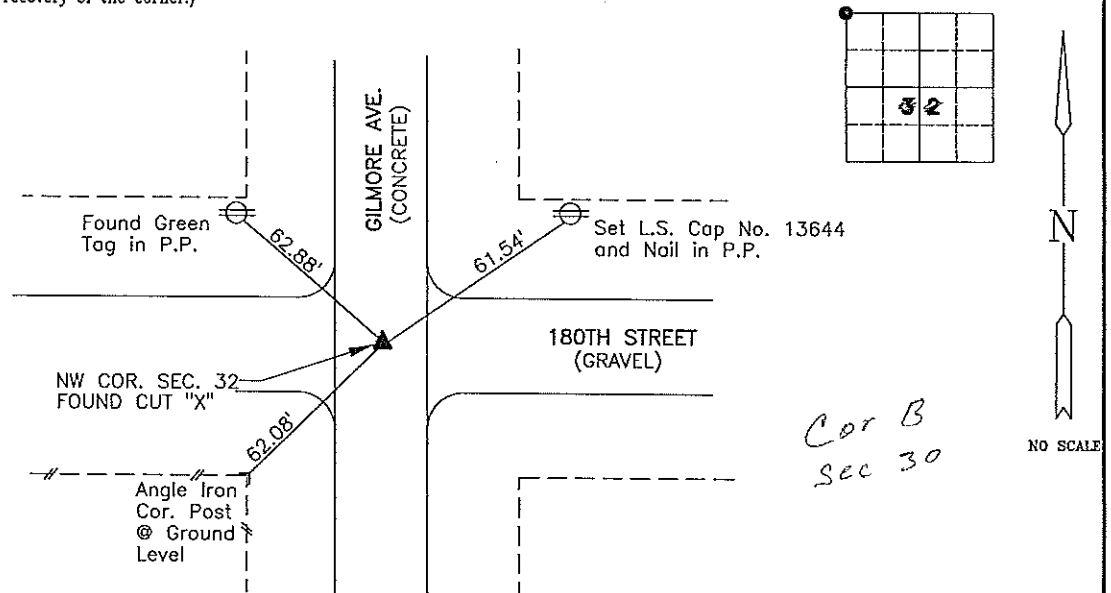
Land Survey Monuments Situated in Section 32³⁰, Township 96 N, Range 13 W, of the Fifth Principle Meridian, CHICKASAW County, Iowa
 Previously Recorded in (NO RECORD) in County Recorder's Office
(book, page, document number, etc.)

(Show reason for preparing this certificate, the evidence and detailed procedures used in establishing the corner positions and monumentation found or placed.)

Monument Description and Remarks: NW CORNER - FOUND CUT "X" IN CONCRET PAVING. ENGINEER'S RECORD STATES CUT "X". (7-2-96)

PLAN-VIEW

(Show a minimum of three reference ties to durable physical objects, relevant monuments and physical conditions that will enable recovery of the corner.)



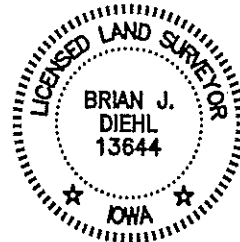
I hereby certify that this land surveying document was prepared and the related survey work was performed by me or under my direct personal supervision and that I am a duly licensed Land Surveyor under the laws of the State of Iowa.

Brian J. Diehl
 Brian J. Diehl
 Date September 21, 2007

License number 13644.

My license renewal date is December 31, 2007

Sheets covered by this seal: 1



Corners	List Corners To Be Indexed		
	Section	Twp	Range
NW COR.	32	96	13

WHKS & CO.

ENGINEERS PLANNERS LAND SURVEYORS

1412 - 6th STREET S.W. P.O. BOX 1457 MASON CITY, IOWA 50402-1457
 641-423-8271

DOCUMENT No. **00051** FILED FOR RECORD THE **5th** DAY OF **JULY** STATE OF IOWA, CHICKASAW COUNTY.
 RECORDING FEE \$ **6.00** 19 **96** AT **8:35**
 TRANSFER FEE \$ **---** O'CLOCK **A.** M. BOOK **161** Deed **234** PAGE **234** By **Lindsay Erdman** Recorder
 LETHA N. ROSS, Deputy

Prepared by: Erdman Engineering P.C. 708 Commerce Drive, P.O. Box 246, Decorah Iowa, 52101
 Phone (319)382-4194, Fax (319)382-3623

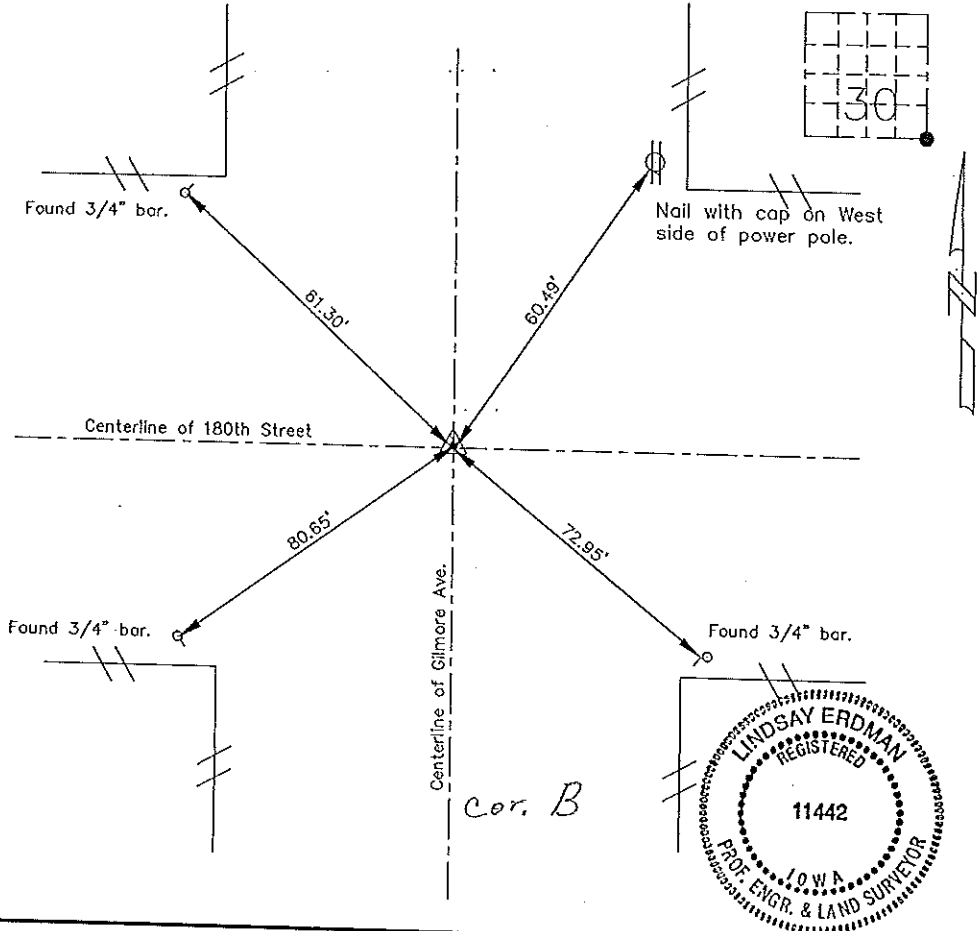
United States Public Land Survey Corner Certificate of

Land Survey Monuments situated in Section 30 Township, 96 Range, 13 of the Fifth Principle Meridian,
Chickasaw County, Iowa. Previously recorded in does not apply In County Recorders Office.

(Show reason for preparing this certificate, the evidence and detailed procedures used in establishing the
 corner positions and monumentation found or placed.)

Monument Description and Remarks: This certificate is prepared in accordance with Section 355.11
 of the 1995 Code of Iowa. No previous certificate has been filed for this corner location. Based on
 County Engineer's Reference ties we found three 3/4" bars used as tie markers. We did not find any
 monumentation at the SE corner so we cut on "X" in the PCC pavement from county ties at the SE
 corner of Sec. 30-96-13. The "X" is $\pm 0.5'$ East of the Centerline Joint.

Plan-View
 (Show a minimum of three reference ties to durable physical objects, relevant
 monuments and physical conditions that will enable recovery of the corner.)



I hereby certify that the survey work was completed
 and this certificate was prepared by me or under by
 direct supervision and that I am a duly registered
 land surveyor under the laws of the State of Iowa.

Signature: *Lindsay Erdman*
 Lindsay Erdman, P.E. and L.S.
 Date: 7/2/96 Reg. No. 11442

Corners	Section	Twp.	Range
SE	30	96	13

My license will be renewed January 1, 1997