

Prepared by & Return to Herold - Recke Surveying, 10 East Main Street, New Hampton, IA 50658, Ph. 641-394-2725

**UNITED STATES PUBLIC LAND SURVEY CORNER CERTIFICATE**

Land Survey Monuments situated in Section **32**, Township **96 North**, Range **13 West** of the Fifth Principal Meridian, Chickasaw County, Iowa. **1., 2.)** Not previously recorded in the County Recorder's office.

This certificate is being prepared in compliance with Iowa Code Chapter 355.11 because:

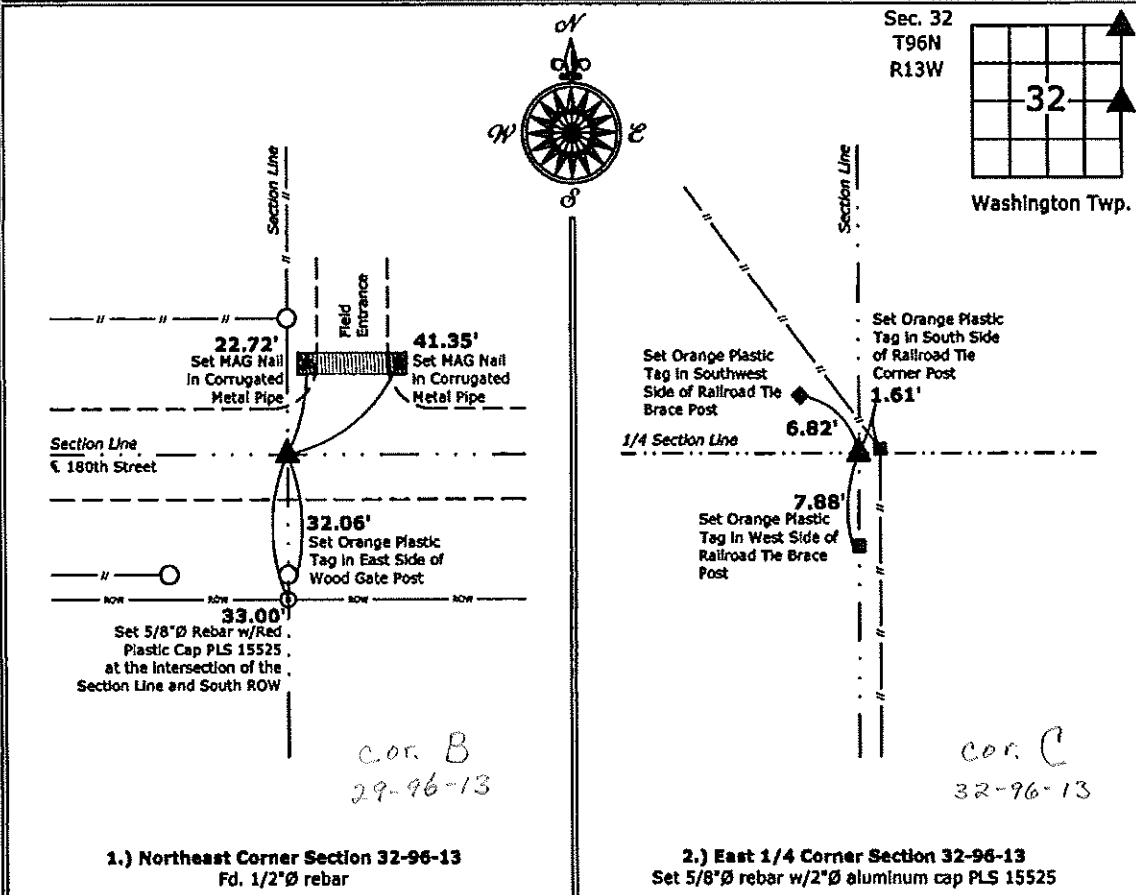
- 1 & 2  There is no certificate on file for this corner.  
 There are no longer three valid ties of record.  
 There are changes to reference ties of record.  
 There is change of monumentation of record.  
 To clarify description of record monument (ties).

**Monument Description and Remarks:**

- 1.) **Northeast Corner:** Found 1/2"Ø rebar from information obtained from the Section Corner Certificate for the North 1/4 Corner of Section 32, on file in Document #2007-1911 in the County Recorder's office, New Hampton, Iowa.
- 2.) **East 1/4 Corner:** Set 5/8"Ø rebar w/2"Ø aluminum cap PLS 15525 at the intersection of possession line fences from the South and Northwest after comparing distances to adjacent corners.

**PLAN - VIEW**

(Show a minimum of three reference ties to durable physical objects, relevant monuments and physical conditions that will enable recovery of the corner.)



I hereby certify that this land surveying document was prepared and the related survey work was performed by me or under my direct personal supervision and that I am a duly licensed Land Surveyor under the laws of the State of Iowa.

*Paul R. Herold 5-2-13*  
 Paul R. Herold Date:  
 License number 15525  
 My license renewal date is December 31, 2014.  
 Sheets covered by this seal: Individual sheet only

List Corners to be Indexed			
Corners	Section	Twp.	Range
NE	32	96	13
E 1/4	32	96	13

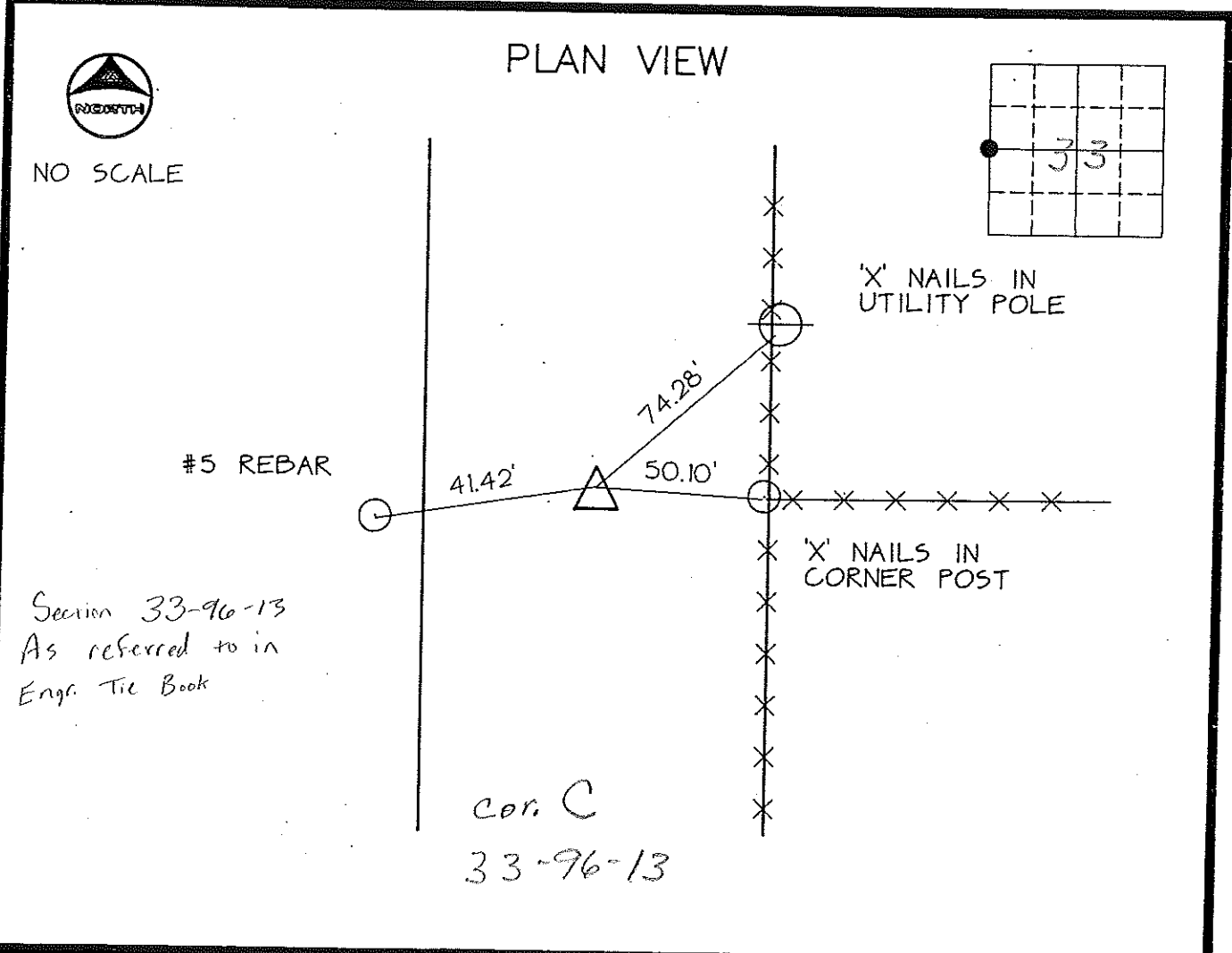
Project Number: 2013-071  
 FB: Chickasaw County 5, Pgs. 42-43

**UNITED STATES PUBLIC LAND SURVEY CORNER CERTIFICATE**

SECTION 34 , TOWNSHIP 96 , RANGE 13 OF THE 5TH. P.M.  
 IN CHICKASAW COUNTY, IOWA  
 CORNER: NW COR. SW1/4 A.K.A. W1/4 COR.  
 DESCRIPTION AND REMARKS: FOUND SQUARE PIN

*Placed in Tie Book  
1/7/91*

PREVIOUSLY RECORDED IN BOOK \_\_\_\_\_, PAGE \_\_\_\_\_



CERTIFICATION:  
 I HEREBY CERTIFY THAT THIS MAP, PLAN, OR SURVEY WAS MADE BY  
 ME OR UNDER MY DIRECT PERSONAL SUPERVISION AND THAT I AM A  
 DULY REGISTERED LAND SURVEYOR UNDER THE LAWS OF THE STATE  
 OF IOWA.  
*Thomas V. Craft*  
 THOMAS V. CRAFT REG. L.S. NO. 7549 DATE: 11/28/90



INDEXING ALTERNATIVES			
CORNER	SECTION	TWP	RANGE
E1/4 COR.	33	96	13

BLE/213710

Book 146 Deeds 111