

Prepared by & Return to Herold - Reicks Surveying, 10 East Main Street, New Hampton, IA 50659, Ph. 641-394-2725

UNITED STATES PUBLIC LAND SURVEY CORNER CERTIFICATE

Land Survey Monuments situated in Section **32**, Township **96 North**, Range **13 West** of the Fifth Principal Meridian, **Chickasaw County, Iowa.** 1.) Previously recorded in **Bk. 171, Pg. 3** in the County Recorder's office. 2.) Not previously recorded in the County Recorder's office.

This certificate is being prepared in compliance with Iowa Code Chapter 355.11 because:

- 2 There is no certificate on file for this corner.
- There are no longer three valid ties of record.
- There are changes to reference ties of record.
- 1 There is change of monumentation of record.
- To clarify description of record monument (ties).

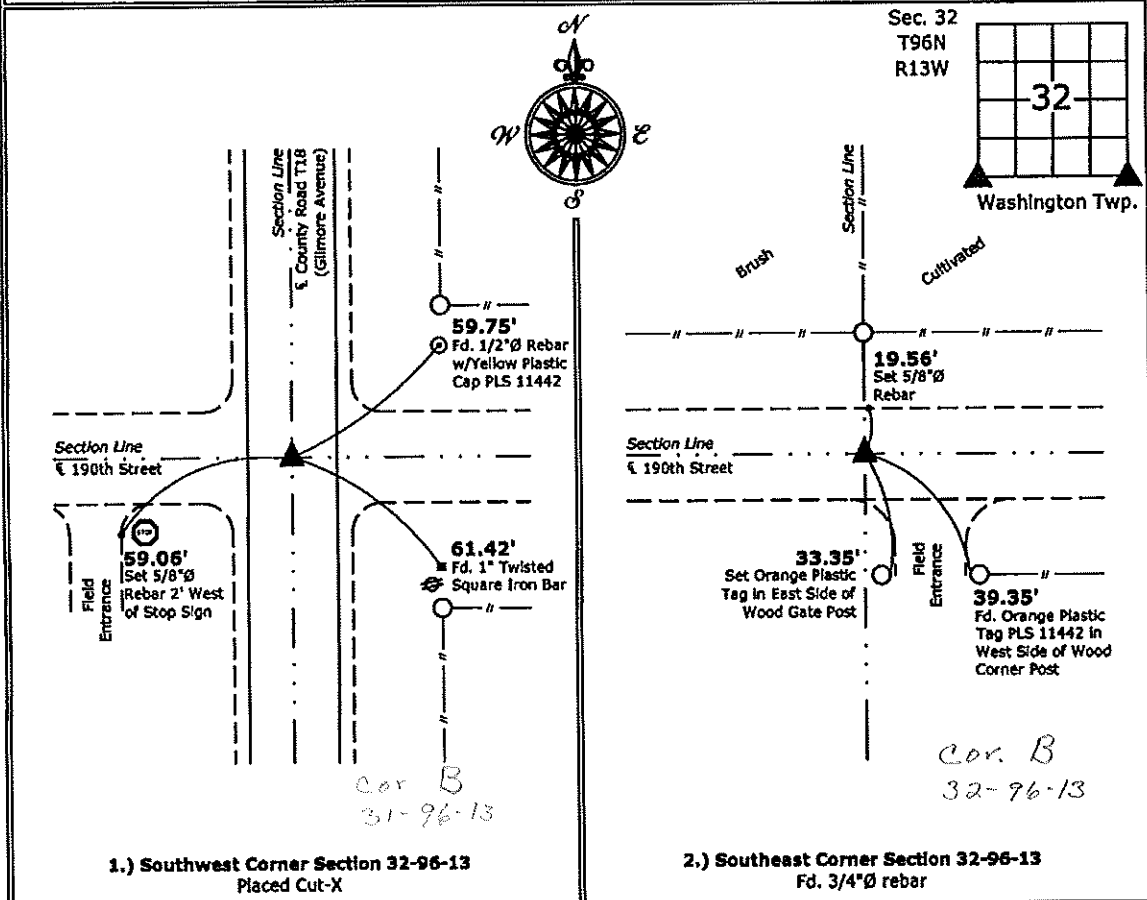
Monument Description and Remarks:

1.) Southwest Corner: Placed Cut-X In Concrete Paving from information obtained from a Survey and Plat made by Lyle G. TeKippe, recorded November 17, 1987, in Book 139, Pages 295-296, and another made by Lyle G. TeKippe, recorded May 12, 2000, in Document #2000-0848, on file in the Chickasaw County Recorder's office, New Hampton, Iowa.

2.) Southeast Corner: Found 3/4"Ø rebar from information obtained from a Survey and Plat made by Lindsay Erdman on January 28, 2004, on file in Document #2004-0293, on file in the Chickasaw County Recorder's office, New Hampton, Iowa.

PLAN - VIEW

(Show a minimum of three reference ties to durable physical objects, relevant monuments and physical conditions that will enable recovery of the corner.)



1.) Southwest Corner Section 32-96-13
Placed Cut-X

2.) Southeast Corner Section 32-96-13
Fd. 3/4"Ø rebar



I hereby certify that this land surveying document was prepared and the related survey work was performed by me or under my direct personal supervision and that I am a duly licensed Land Surveyor under the laws of the State of Iowa.

Paul R. Herold 5-2-13
 Paul R. Herold Date:

License number 15525
 My license renewal date is December 31, 2014.
 Sheets covered by this seal: Individual sheet only

List Corners to be Indexed			
Corners	Section	Twp.	Range
SW	32	96	13
SE	32	96	13

Project Number: 2013-071

FB: Chickasaw County 5, Pgs. 42-43