

Section 29-96-13
 As referred to in
 Engr. Tie Book

2007-1911

PREPARED BY: BRIAN J. DIEHL LS 13644 WHKS & CO. 1412 6th ST. S.W. MASON CITY, IOWA 50401 -- (641) 423-8271

SLSI 9-90

UNITED STATES PUBLIC LAND SURVEY CORNER CERTIFICATE

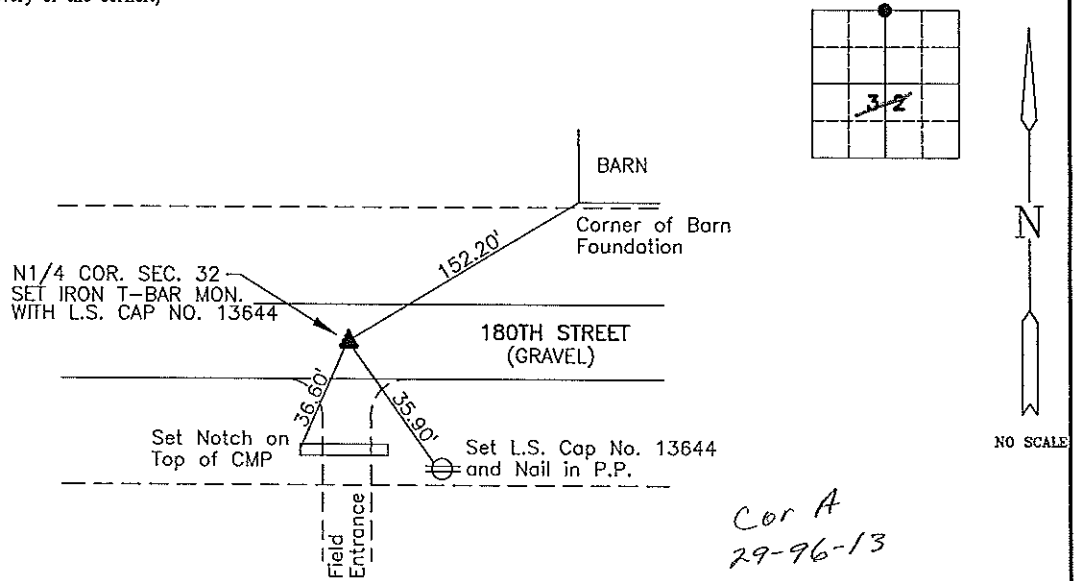
Land Survey Monuments Situated in Section 32 ²⁹, Township 96 N, Range 13 W, of the Fifth Principle Meridian, CHICKASAW County, Iowa
 Previously Recorded in (NO RECORD) in County Recorder's Office
(book, page, document number, etc.)

(Show reason for preparing this certificate, the evidence and detailed procedures used in establishing the corner positions and monumentation found or placed.)

Monument Description and Remarks: N1/4 CORNER - SEARCHED FOR CORNER BUT COULD NOT FIND. ESTABLISHED CORNER AT MID-POINT OF OLD CORNER POSTS ON R.O.W. LINE NORTH AND SOUTH. N1/4 TO NW CORNER EQUALS 2639.07' AND N1/4 TO NE CORNER EQUALS 2630.63'. COUNTY RECORDS SHOW 2637.70' AND 2633.40', RESPECTIVELY. SET IRON T-BAR MONUMENT WITH L.S. CAP NO. 13644.

PLAN-VIEW

(Show a minimum of three reference ties to durable physical objects, relevant monuments and physical conditions that will enable recovery of the corner.)



Cor A
 29-96-13

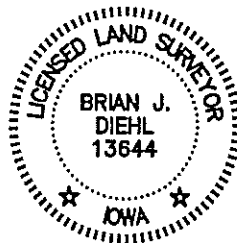
I hereby certify that this land surveying document was prepared and the related survey work was performed by me or under my direct personal supervision and that I am a duly licensed Land Surveyor under the laws of the State of Iowa.

Brian J. Diehl September 21, 2007
 Date

License number 13644.

My license renewal date is December 31, 2007

Sheets covered by this seal: 1



Corners	List Corners To Be Indexed		
	Section	Twp	Range
N1/4 COR.	32	96	13

WHKS & CO.

ENGINEERS PLANNERS LAND SURVEYORS

1412 - 6th STREET S.W. P.O. BOX 1467 MASON CITY, IOWA 50402-1467
 641-423-8271