

Section 28-96-13
 As referred to in
 Engr. TIC Book

2007-1913

PREPARED BY: BRIAN J. DIEHL LS 13644 WHKS & CO. 1412 6th ST. S.W. MASON CITY, IOWA 50401 -- (641) 423-8271

UNITED STATES PUBLIC LAND SURVEY CORNER CERTIFICATE

SLSI 9-90

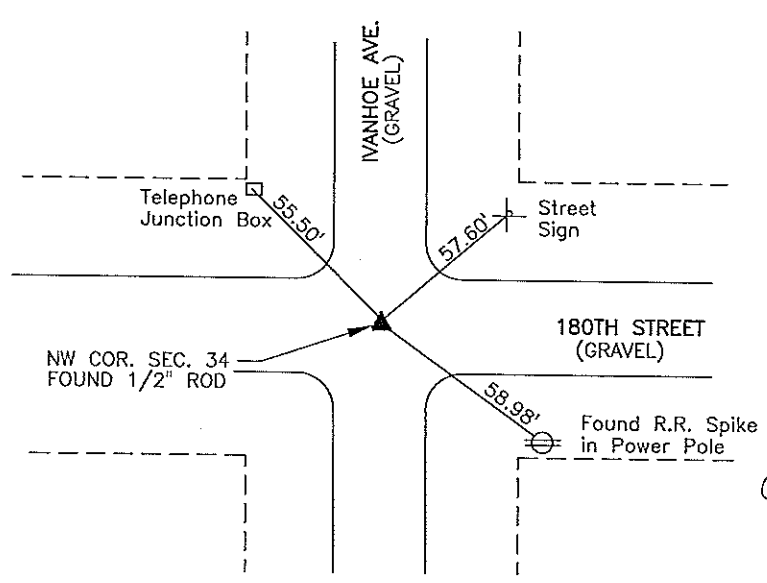
Land Survey Monuments Situated in Section 34 28, Township 96 N, Range 13 W, of the Fifth Principle Meridian, CHICKASAW County, Iowa
 Previously Recorded in (NO RECORD) in County Recorder's Office

(Show reason for preparing this certificate, the evidence and detailed procedures used in establishing the corner positions and monumentation found or placed.)

Monument Description and Remarks: NW COR. - FOUND 1/2" ROD 0.5' DEEP AT INTERSECTION OF GRAVEL ROADS. ENGINEER'S RECORD STATES IRON PIN. (10-27-55)

PLAN-VIEW

(Show a minimum of three reference ties to durable physical objects, relevant monuments and physical conditions that will enable recovery of the corner.)

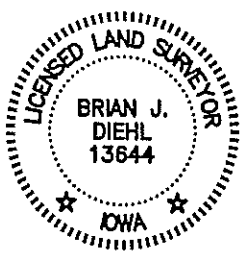


Cor B
 sec 28-96-13

I hereby certify that this land surveying document was prepared and the related survey work was performed by me or under my direct personal supervision and that I am a duly licensed Land Surveyor under the laws of the State of Iowa.

[Signature]
 Brian J. Diehl Date September 21, 2007

License number 13644.
 My license renewal date is December 31, 2007
 Sheets covered by this seal: 1



Corners	List Corners To Be Indexed		
	Section	Twp	Range
NW COR.	34	96	13

WHKS & CO.

ENGINEERS PLANNERS LAND SURVEYORS

1412 - 6th STREET S.W. P.O. BOX 1457 MASON CITY, IOWA 50402-1457
 641-423-8271