

Chickasaw Co. Recorder
 Cindy Messersmith
Fee Book 2009-0451
 03/09/2009 81046AM
 SCC SEC COR CERT
 Book: Page: # Pages: 1
 Total Fees: \$7.00

cor B
 27-96-13
 As referred to
 in Engr. Tie Book

TeKIPPE ENGINEERING, P.C., 128 South Vine Street, West Union, Iowa 52175 Phone (563) 422-6131

UNITED STATES PUBLIC LAND SURVEY CORNER CERTIFICATE

OF
 Land Survey Monuments situated in Section 35, Township 96 North, Range 13 West of the Fifth Principal Meridian, Chickasaw County, Iowa.
 Previously recorded in (1) none (2) none in County Recorder's Office.
(book, page, document number, etc.)

(Show reason for preparing this certificate, the evidence and detailed procedures used in establishing the corner positions and monumentation found or placed.)

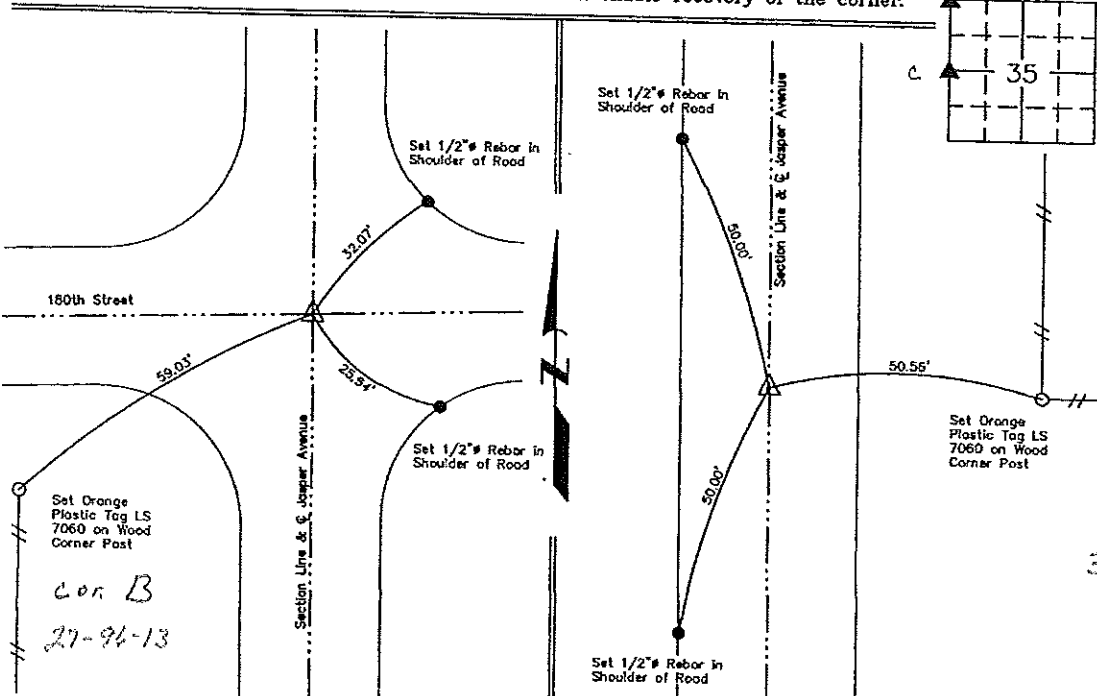
Monument Description and Remarks: (1) NW Corner of Section 35-T96N-R13W:
Found 3/4" iron bar from survey made by L. P. Erdman, recorded December 27, 1989, in Book 144, Page 123, on file in the Chickasaw County Recorder's office, New Hampton, Iowa.

(2) W1/4 Corner of Section 35-T96N-R13W:
Found 1/2" rebar with 1 1/2" aluminum cap #2886 from survey made by L. P. Erdman, recorded December 27, 1989, in Book 144, Page 123, on file in the Chickasaw County Recorder's office, New Hampton, Iowa.

PLAN VIEW

Show a minimum of three reference ties to durable physical objects, relevant monuments and physical conditions that will enable recovery of the corner.

Project Number 08079.LS
 Field Book: 46M, Pages 58-59



cor C
 34-96-13

(1) NW Corner of Sec. 35-T96N-R13W
 Found 3/4" Iron Bar

(2) W1/4 Corner of Sec. 35-T96N-R13W
 Found 1/2" Rebar w/ 1 1/2" Aluminum Cap #2886



I hereby certify that this land surveying document was prepared and the related survey work was performed by me or under my direct personal supervision and that I am a duly licensed Land Surveyor under the laws of the State of Iowa.

Lyle G. TeKippe 3-6-09
 Lyle G. TeKippe Date

License Number 7060
 My license renewal date is December 31, 2010.
 Sheets covered by this seal: Individual

List Corners to be Indexed

Corners	Section	Twp.	Range
NW	35	96N	13W
W1/4	35	96N	13W

X:\Section Corners\Sec. 35\35-96-13AX.dwg