

Prepared by & Return to: Herold - Reicks Surveying, 10 East Main Street, New Hampton, IA 50659, Ph. 641-394-2725

### United States Public Land Survey Corner Certificate

Land Survey Monument situated in  
 Section 27, Township 96 North, Range 13 West of the Fifth Principal Meridian, Chickasaw County, Iowa.  
 Not on file in the County Recorder's office.

This certificate is being prepared in compliance with Iowa Code Chapter 355.11 because:

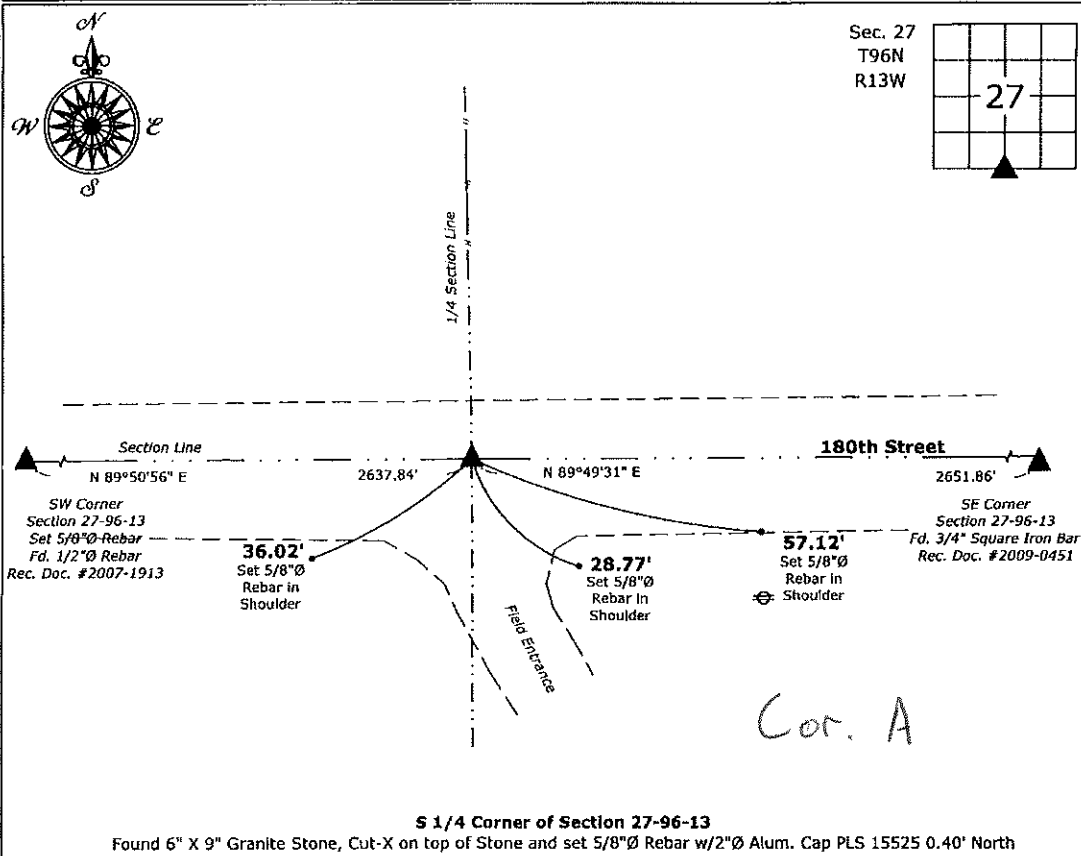
- There is no certificate on file for this corner.
- There are no longer three valid ties of record.
- There are changes to reference ties of record.
- There is change of monumentation of record.
- To clarify description of record monument (ties).

**Monument Description and Remarks:**

**S 1/4 Corner:** Found 6" X 9" Granite Stone, Cut-X on top of Stone and set 5/8"Ø Rebar w/2"Ø Alum. Cap PLS 15525 0.40' North of Stone for magnetic detection, Corner recovered with information obtained from the County Engineer's Office in Field Book Lower Washington Twp., Section 27, Corner "A"

### Plan View

(Show a minimum of three reference ties to durable physical objects, relevant monuments and physical conditions that will enable recovery of the corner.)



**S 1/4 Corner of Section 27-96-13**

Found 6" X 9" Granite Stone, Cut-X on top of Stone and set 5/8"Ø Rebar w/2"Ø Alum. Cap PLS 15525 0.40' North



I hereby certify that this land surveying document was prepared by me or under my direct personal supervision and that I am a duly licensed Land Surveyor under the laws of the State of Iowa.

*Paul R. Herold* 6-22-17  
 Paul R. Herold Date:  
 License number 15525  
 My license renewal date is December 31, 2018.  
 Sheets covered by this seal: Individual sheet only

List Corner to be Indexed

Corner	Section	Twp.	Range
S 1/4	27	96	13

Project Number: 2017-058

FB: Chickasaw County 9, Pgs. 5-6