

Section 35-96-13
As referred to in
Engr. Tie Book

Chickasaw Co Recorder Cindy Messersmith
FEE BOOK 2006-0728 4/06/2006 @ 09:11AM
SCC SEC COR CERT Book: Page: #: 1
Total Fees: \$7.00

TeKIPPE ENGINEERING, P.C., 128 South Vine Street, West Union, Iowa 52175 Phone (563) 422-5131

UNITED STATES PUBLIC LAND SURVEY CORNER CERTIFICATE

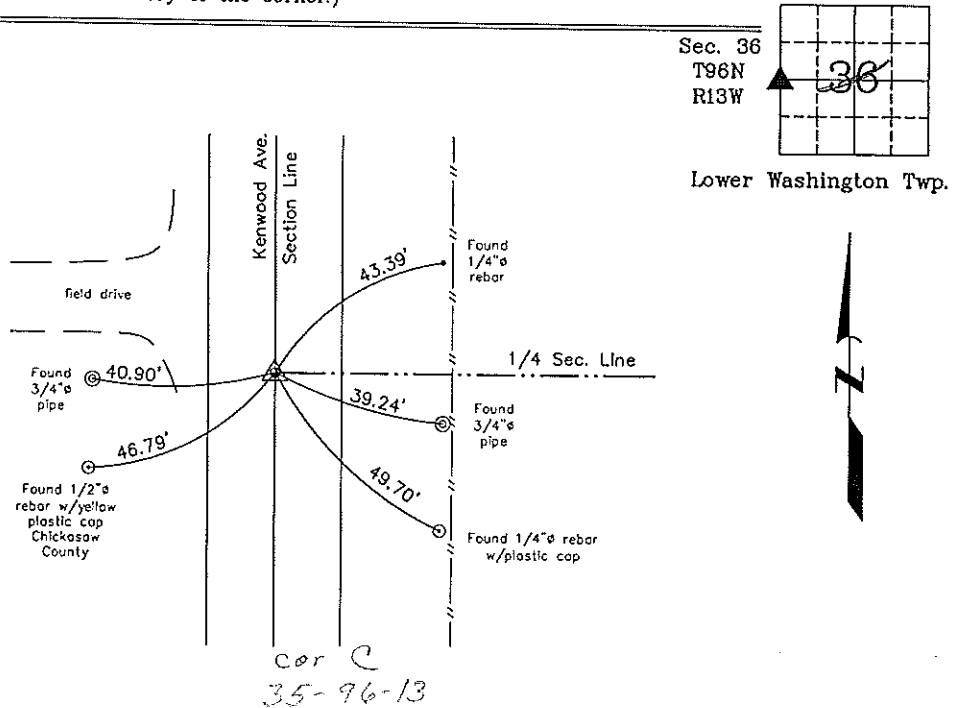
OF 35
Land Survey Monuments situated in Section 36, Township 96 North, Range 13 West of the Fifth Principal Meridian, CHICKASAW County, Iowa.
Previously recorded in none in County Recorder's Office.
(book, page, document number, etc.)

(Show reason for preparing this certificate, the evidence and detailed procedures used in establishing the corner positions and monumentation found or placed.)

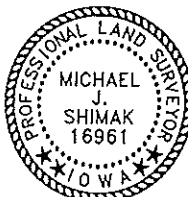
Monument Description and Remarks: W 1/4 CORNER SECTION 36 T96N R13W: Found PK nail with information obtained from the Chickasaw County Engineer's Office in Field Book Lower Washington Twp. Corner Ties, Section 35, Corner 'C'.

PLAN - VIEW

(Show a minimum of three reference ties to durable physical objects, relevant monuments and physical conditions that will enable recovery of the corner.)



W 1/4 Corner Section 36 T96N R13W
Found PK nail



I hereby certify that this land surveying document was prepared and the related survey work was performed by me or under my direct personal supervision and that I am a duly licensed Land Surveyor under the laws of the State of Iowa.

Michael J. Shimak April 4, 2006
Michael J. Shimak Date

License number 16961
My license renewal date is December 31, 2007.
Sheets covered by this seal: Individual

List Corners to be Indexed			
Corners	Section	Twp.	Range
W 1/4	36	96N	13W

Project Number 06092.LS
FB. New Hampton #2 PG. 16-18

X:\Section Corners\Sec. 36\36-96-13k.dwg