

UNITED STATES PUBLIC LAND SURVEY CORNER CERTIFICATE

OF

Land Survey Monuments situated in Section 25, Township 96 North, Range 13 West of the Fifth Principal Meridian, CHICKASAW County, Iowa. Previously recorded in none in County Recorder's Office.  
(book, page, document number, etc.)

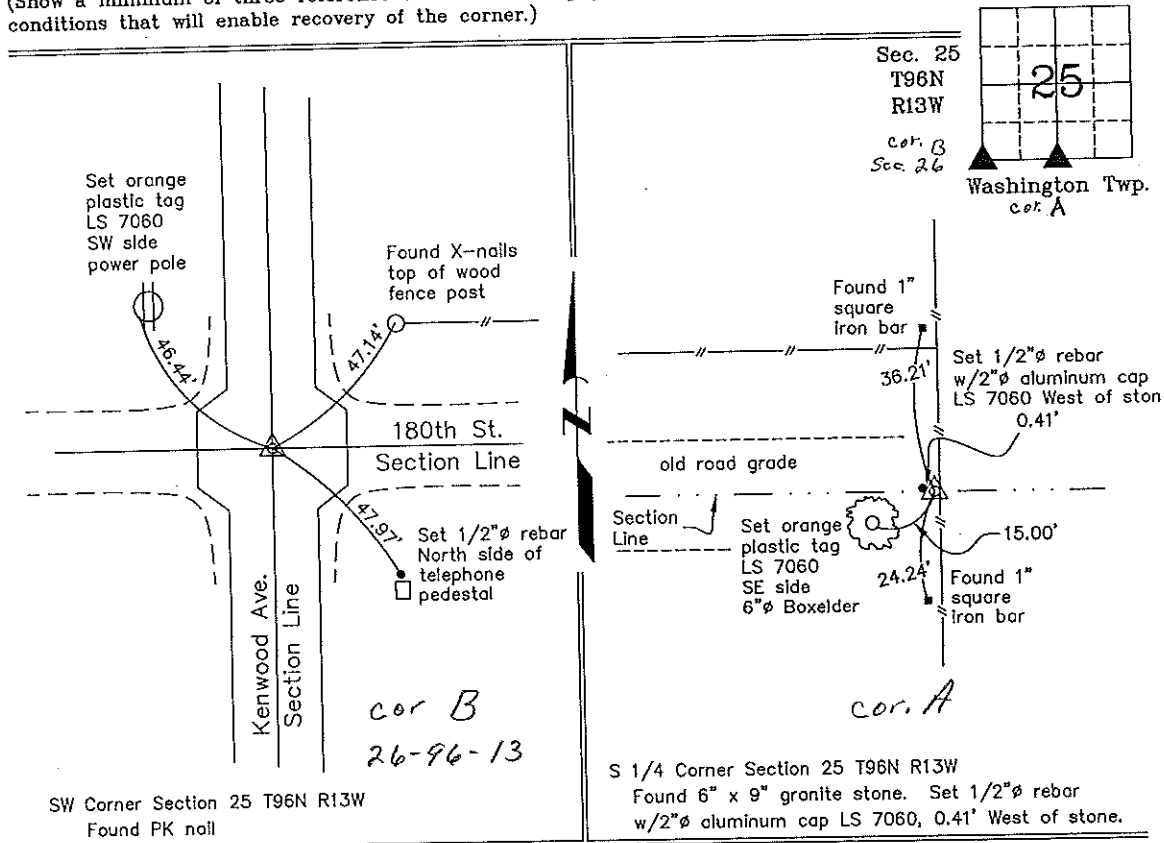
(Show reason for preparing this certificate, the evidence and detailed procedures used in establishing the corner positions and monumentation found or placed.)

Monument Description and Remarks: **SW Corner Section 25 T96N R13W:** Found PK nail with information obtained from the Chickasaw County Engineer's Office in the Field Book for Lower Washington Twp. Corner Ties, Section 26, Corner 'B'.  
**S 1/4 Corner Section 25 T96N R13W:** Found 6" x 9" granite stone with information obtained from the Chickasaw County Engineer's Office in the Field Book for Lower Washington Twp. Corner Ties, Section 25, Corner 'A'. Set 1/2"  $\phi$  rebar w/2"  $\phi$  aluminum cap LS 7060, 0.41' West of stone.

PLAN - VIEW

Project Number 00055.LS  
FR 48G PG. 48-50

(Show a minimum of three reference ties to durable physical objects, relevant monuments and physical conditions that will enable recovery of the corner.)



I hereby certify that this land surveying document was prepared and the related survey work was performed by me or under my direct personal supervision and that I am a duly licensed Land Surveyor under the laws of the State of Iowa.  
 Lyle G. TeKippe Date 4-20-00  
 License number 7080  
 My license renewal date is December 31, 2000.  
 Sheets covered by this seal: Individual

List Corners to be Indexed			
Corners	Section	Twp.	Range
SW	25	96N	13W
S 1/4	25	96N	13W

Entered 4-26-00

2000-0712

County Engineer's Copy