

Prepared by & Return to: Herold - Reicks Surveying, 18 East Main Street, New Hampton, IA 50659, Ph. 641-394-2725

### UNITED STATES PUBLIC LAND SURVEY CORNER CERTIFICATE

Land Survey Monuments situated in Section 36, Township 96 North, Range 13 West of the Fifth Principal Meridian, Chickasaw County, Iowa. 1.) Previously recorded in Bk. 146, Pg. 110 in the County Recorder's office. 2.) Not previously recorded in the County Recorder's office.

This certificate is being prepared in compliance with Iowa Code Chapter 355.11 because:

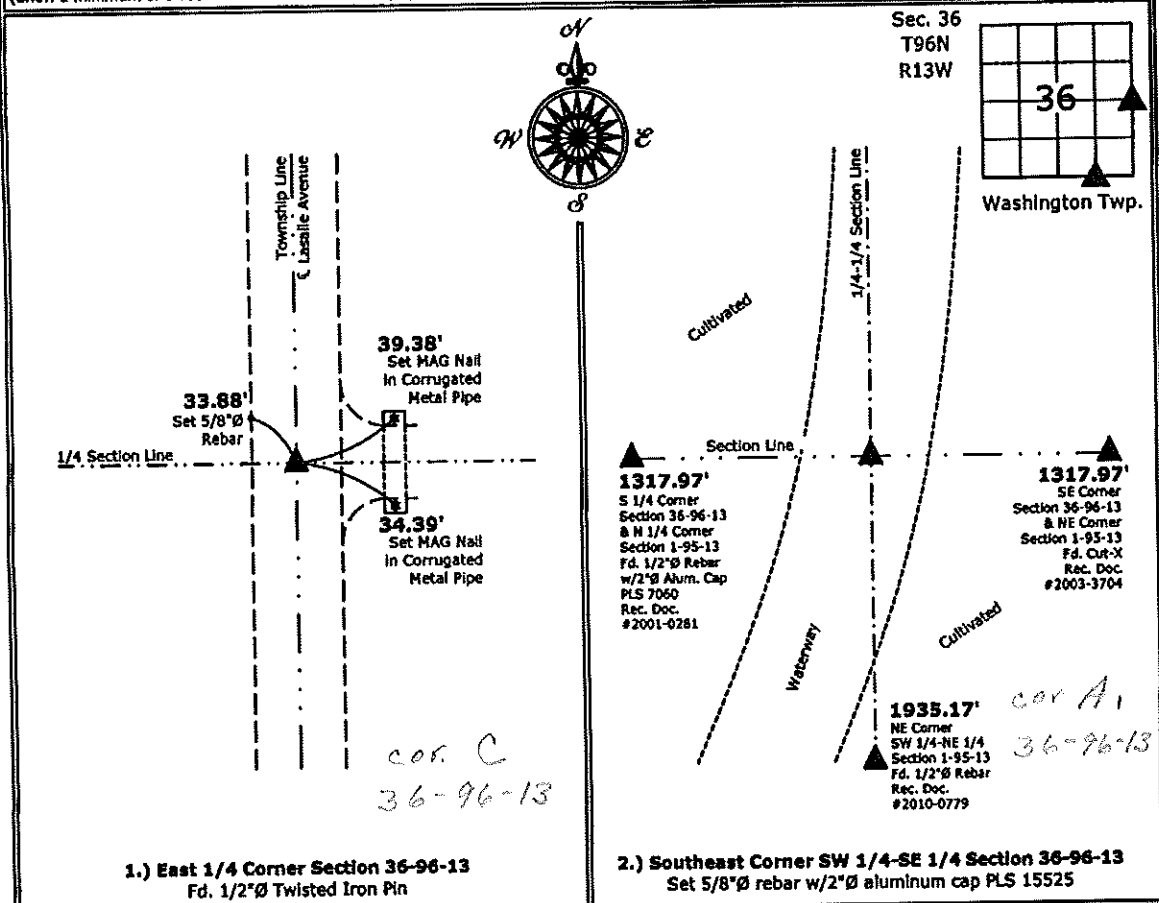
- 2  There is no certificate on file for this corner.
- There are no longer three valid ties of record.
- 1  There are changes to reference ties of record.
- There is change of monumentation of record.
- To clarify description of record monument (ties).

**Monument Description and Remarks:**

- 1.) **East 1/4 Corner:** Fd. 1/2"Ø Twisted Iron Pin from information obtained from previous Section Corner Certificate. No usable ties remained, set three new ties to update corner.
- 2.) **Southeast Corner SW 1/4-SE 1/4:** Set 5/8"Ø rebar w/2"Ø aluminum cap PLS 15525 equidistant and online between the South 1/4 and Southeast Corners of Section 36.

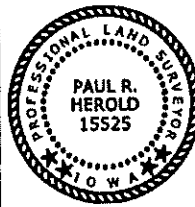
#### PLAN - VIEW

(Show a minimum of three reference ties to durable physical objects, relevant monuments and physical conditions that will enable recovery of the corner.)



1.) **East 1/4 Corner Section 36-96-13**  
 Fd. 1/2"Ø Twisted Iron Pin

2.) **Southeast Corner SW 1/4-SE 1/4 Section 36-96-13**  
 Set 5/8"Ø rebar w/2"Ø aluminum cap PLS 15525



I hereby certify that this land surveying document was prepared and the related survey work was performed by me or under my direct personal supervision and that I am a duly licensed Land Surveyor under the laws of the State of Iowa.

*Paul R. Herold* 9-21-12  
 Paul R. Herold Date:

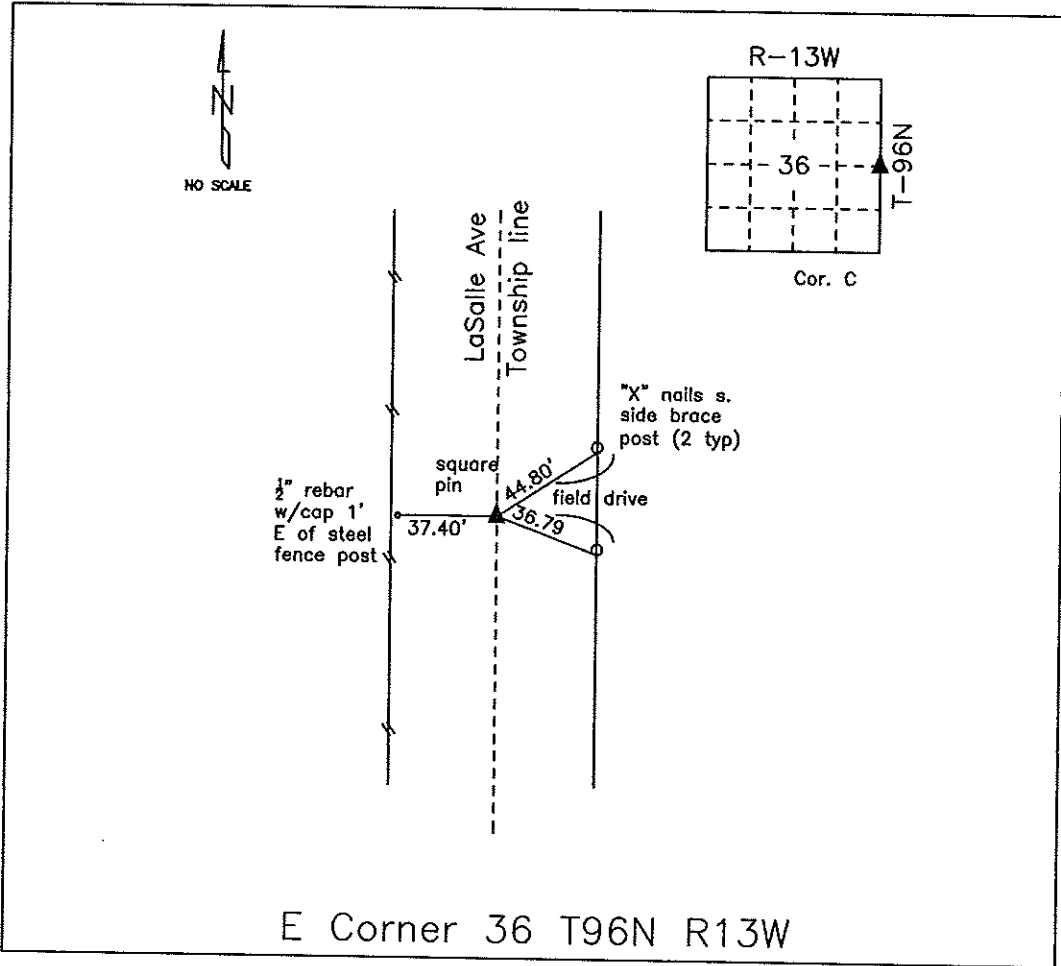
License number 15525  
 My license renewal date is December 31, 2012.  
 Sheets covered by this seal: Individual sheet only

List Corners to be Indexed			
Corners	Section	Twp.	Range
E 1/4	36	96	13
SE-SW-SE	36	96	13

Project Number: 2012-150  
 FB: Chickasaw County 4, Pg. 54

# COUNTY ENGINEER'S SECTION CORNER PRESERVATION RECORD

LAND SURVEY MONUMENT LOCATED IN SECTION 36, TOWNSHIP 96 N  
NORTH, RANGE 13 W, OF THE 5TH P.M. Chickasaw COUNTY, IOWA  
PREVIOUSLY RECORDED BOOK 146, PAGE 110



**MONUMENT DESCRIPTION AND NARRATIVE** found square pin

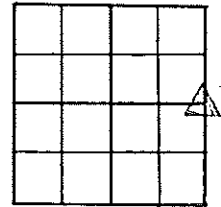
Previously recorded by Thomas Craft (PLS 7548) in Book 146, Page 110 as the SE corner of section  
36, T96N, R13W

All ties are slope chained

I AM NOT A REGISTERED LAND SURVEYOR UNDER THE LAWS OF THE STATE OF IOWA

JIM FOSTER CHICKASAW CO. DATE: 09/11/09

# SECTION CORNER RECORD



SECTION 36  
T 96 N, R 13 W

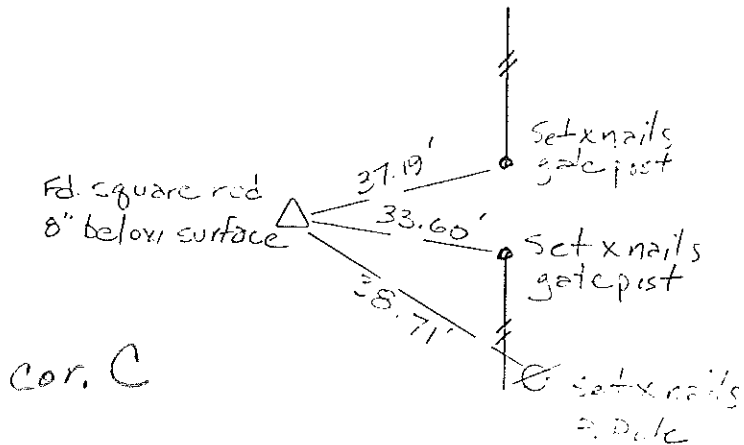
1. DESCRIPTION OF EVIDENCE FOUND.

Square rod 8" below surface

2. DESCRIPTION OF MONUMENT SET AND/OR NEW REFERENCE TIES SET.

Set x nails gate posts  
Set x nails p. pole

3. SKETCH OF AREA.



RLS \_\_\_\_\_ DATE 24 July 84

JENSEN, CARY & SHOFF  
CONSULTING ENGINEERS, INC.  
(319) 277-1022  
108 MAIN STREET, P.O. BOX 187  
CEDAR FALLS, IOWA 50613

Book 3073 Pg 14  
K