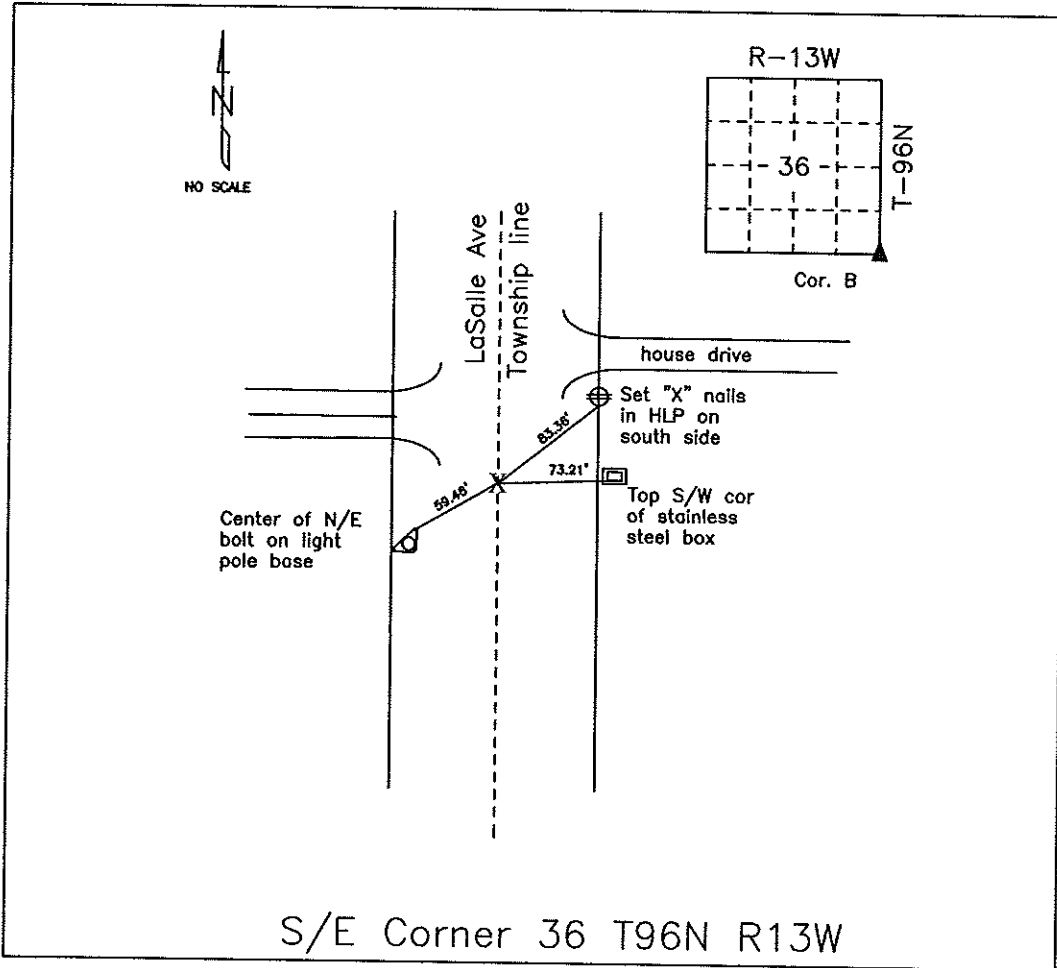


COUNTY ENGINEER'S SECTION CORNER PRESERVATION RECORD

LAND SURVEY MONUMENT LOCATED IN SECTION 36, TOWNSHIP 96 N
NORTH, RANGE 13 W, OF THE 5TH P.M. Chickasaw COUNTY, IOWA
PREVIOUSLY RECORDED DOT Project No. NHSX-63-8(44)--3H-19



MONUMENT DESCRIPTION AND NARRATIVE Found "X" cut in concrete mat

Previously recorded by Iowa DOT as S/E section corner P.I. of 36-96-13 for Sta. 3206+26.009 of plans
NHSX-63-8(44)--3H-19. The DOT found an iron pin prior to paving. Only one tie remained from 2001.

All ties are slope chained

I AM NOT A REGISTERED LAND SURVEYOR UNDER THE LAWS OF THE STATE OF IOWA

JIM FOSTER CHICKASAW CO. DATE: 09/11/09