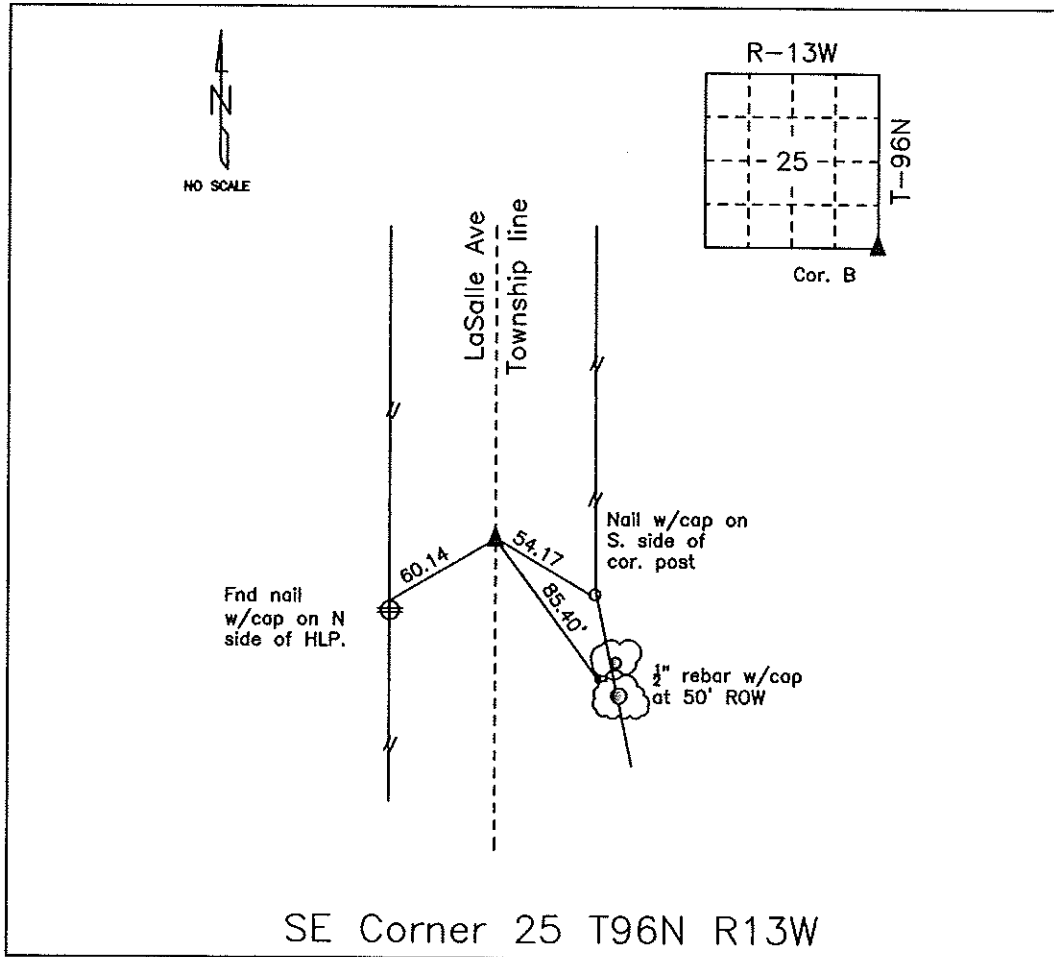


COUNTY ENGINEER'S SECTION CORNER PRESERVATION RECORD

LAND SURVEY MONUMENT LOCATED IN SECTION 25, TOWNSHIP 96 N
NORTH, RANGE 13 W, OF THE 5TH P.M. Chickasaw COUNTY, IOWA
PREVIOUSLY RECORDED BOOK 156, PAGE 463



MONUMENT DESCRIPTION AND NARRATIVE Found 1/2" pin with cap

Previously recorded by Lindsay Erdman (PLS 11442) in Book 156, Page 463 as the SE corner of section

25, T96N, R13W

All ties are slope chained

I AM NOT A REGISTERED LAND SURVEYOR UNDER THE LAWS OF THE STATE OF IOWA

JIM FOSTER CHICKASAW CO. DATE: 09/11/09