

COPY

FILED 2003-0742
RECORDER'S OFFICE
CHICKASAW COUNTY, IOWA

2003 MAR 12 AM 9 11

CINDY MESSERSMITH
COUNTY RECORDER

TeKIPPE ENGINEERING, P.C., 128 South Vine Street, West Union, Iowa 52175 Phone (563) 422-6131

UNITED STATES PUBLIC LAND SURVEY CORNER CERTIFICATE

OF

Land Survey Monuments situated in Section 3, Township 96 North, Range 13 West of the Fifth Principal Meridian, CHICKASAW County, Iowa.

Previously recorded in none in County Recorder's Office.
(book, page, document number, etc.)

(Show reason for preparing this certificate, the evidence and detailed procedures used in establishing the corner positions and monumentation found or placed.)

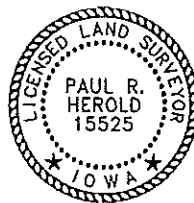
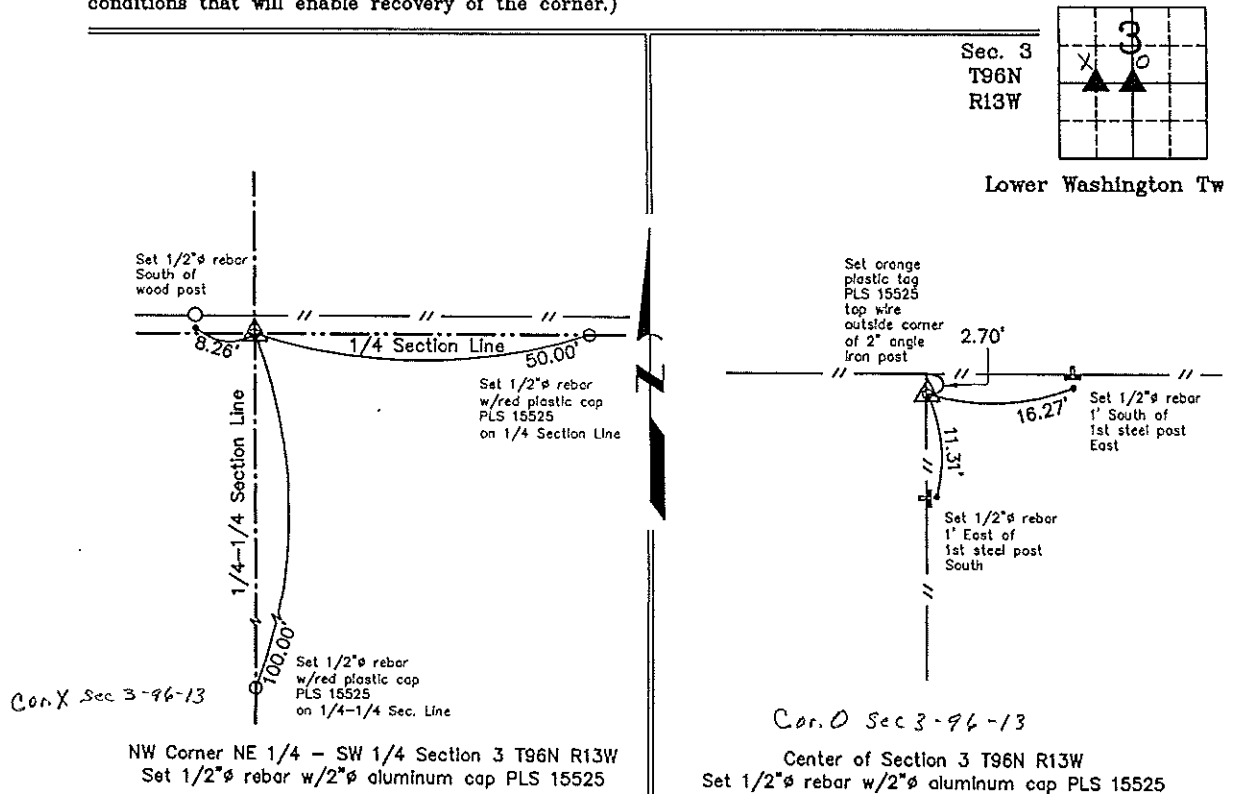
Monument Description and Remarks: NW Corner NE 1/4 - SW 1/4 Section 3 T96N R13W:
Set 1/2"Ø rebar w/2"Ø aluminum cap PLS 15525 equidistant and on line between the Center of the Section and the W 1/4 Corner. Monument was set after drilling a hole in a large red granite stone and placing the rebar w/cap in the hole.

Center of Section 3 T96N R13W: Set 1/2"Ø rebar w/2"Ø aluminum cap PLS 15525 at intersection of 1/4 Section Lines.

PLAN - VIEW

Project Number 03016.1S
FB. 48J PG. 62-65

(Show a minimum of three reference ties to durable physical objects, relevant monuments and physical conditions that will enable recovery of the corner.)



I hereby certify that this land surveying document was prepared and the related survey work was performed by me or under my direct personal supervision and that I am a duly licensed Land Surveyor under the laws of the State of Iowa.

Paul R. Herold 3-10-03
Paul R. Herold Date

License number 15525
My license renewal date is December 31, 2004.
Sheets covered by this seal: Individual

List Corners to be Indexed			
Corners	Section	Twp.	Range
NW-NE-SW	3	96N	13W
Center	3	96N	13W

Filed 3-12-03

X:\Section Corners\Sec. 0313-96-13\m.dwg

County Engineer
[Signature]