

Prepared by & Return to: Harold - Reicks Surveying, 10 East Main Street, New Hampton, IA 50659, Ph. 641-394-2725

UNITED STATES PUBLIC LAND SURVEY CORNER CERTIFICATE

Land Survey Monuments situated in Section 2, Township 96 North, Range 13 West of the Fifth Principal Meridian, Chickasaw County, Iowa. 1.) Previously recorded in Doc. #2003-0741 in the County Recorder's office. 2.) Not previously recorded in the County Recorder's office.

This certificate is being prepared in compliance with Iowa Code Chapter 355.11 because:

- There is no certificate on file for this corner.
- There are no longer three valid ties of record.
- There are changes to reference ties of record.
- There is change of monumentation of record.
- To clarify description of record monument (ties).

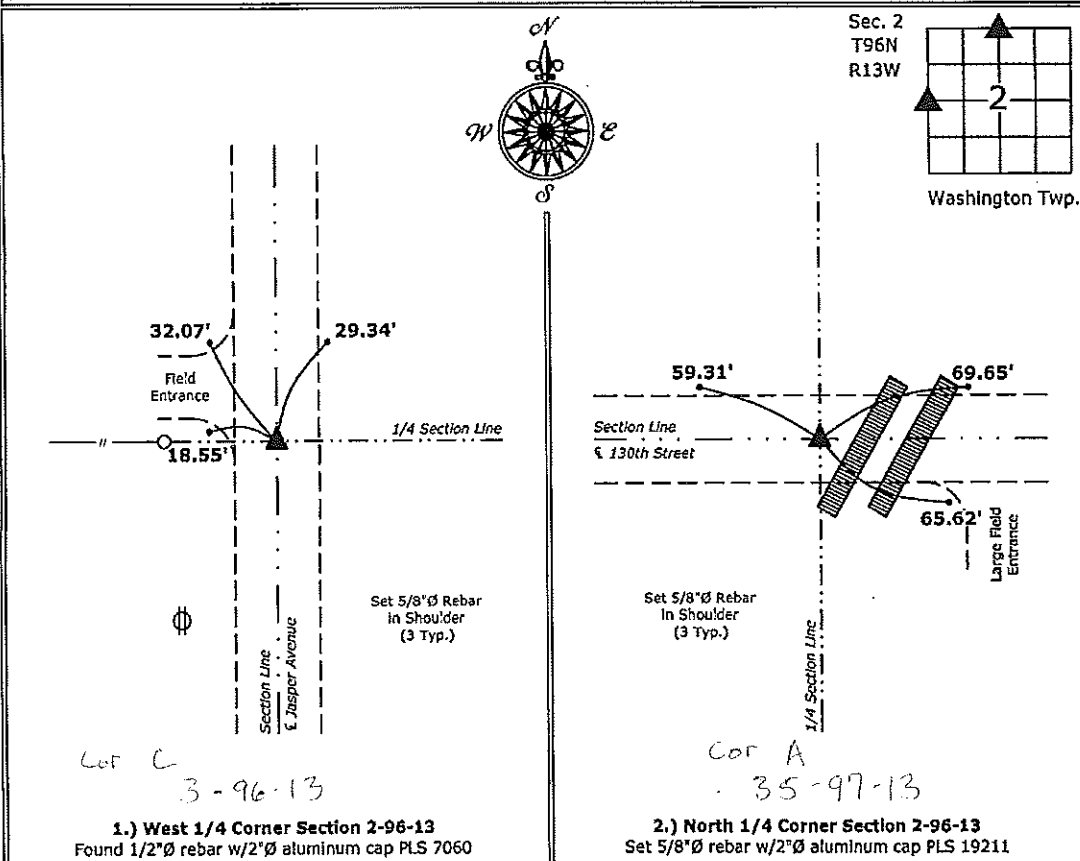
Monument Description and Remarks:

1.) West 1/4 Corner: Found 1/2"Ø rebar w/2"Ø aluminum cap PLS 7060 with information obtained from the previous Section Corner Certificate. Previous Section Corner Certificate stated (1/2"Ø rebar w/2"Ø aluminum cap PLS 15525).

2.) North 1/4 Corner: Set 5/8"Ø rebar w/2"Ø aluminum cap PLS 19211 by extending a line from the South 1/4 Corner through a North-South fence near the Center of Section and intersecting a line from the Northwest to the Northeast Corners of Section 2. There are no records of the perpetuation of a monument at this Corner.

PLAN - VIEW

(Show a minimum of three reference ties to durable physical objects, relevant monuments and physical conditions that will enable recovery of the corner.)



1.) West 1/4 Corner Section 2-96-13
 Found 1/2"Ø rebar w/2"Ø aluminum cap PLS 7060

2.) North 1/4 Corner Section 2-96-13
 Set 5/8"Ø rebar w/2"Ø aluminum cap PLS 19211



I hereby certify that this land surveying document was prepared by me or under my direct personal supervision and that I am a duly licensed Land Surveyor under the laws of the State of Iowa.

Kirk D. Reicks 11-27-13
 Kirk D. Reicks Date:
 License number 19211
 My license renewal date is December 31, 2014.
 Sheets covered by this seal: Individual sheet only

List Corners to be Indexed			
Corners	Section	Twp.	Range
W 1/4	2	96	13
N 1/4	2	96	13

Project Number: 2013-177
 FB: Chickasaw 6, Pgs. 7-8

COPY

FILED 2003-0741

RECORDER'S OFFICE

CHICKASAW COUNTY, IOWA

Fee \$6.00

2003 MAR 12 AM 9 10

CINDY MESSERSMITH
COUNTY RECORDER

TEKIPPE ENGINEERING, P.C., 128 South Vine Street, West Union, Iowa 52175 Phone (563) 422-5131

UNITED STATES PUBLIC LAND SURVEY CORNER CERTIFICATE

OF

Land Survey Monuments situated in Section 3, Township 96 North, Range 13 West of the Fifth Principal Meridian, CHICKASAW County, Iowa.

Previously recorded in none in County Recorder's Office.
(Book, page, document number, etc.)

(Show reason for preparing this certificate, the evidence and detailed procedures used in establishing the corner positions and monumentation found or placed.)

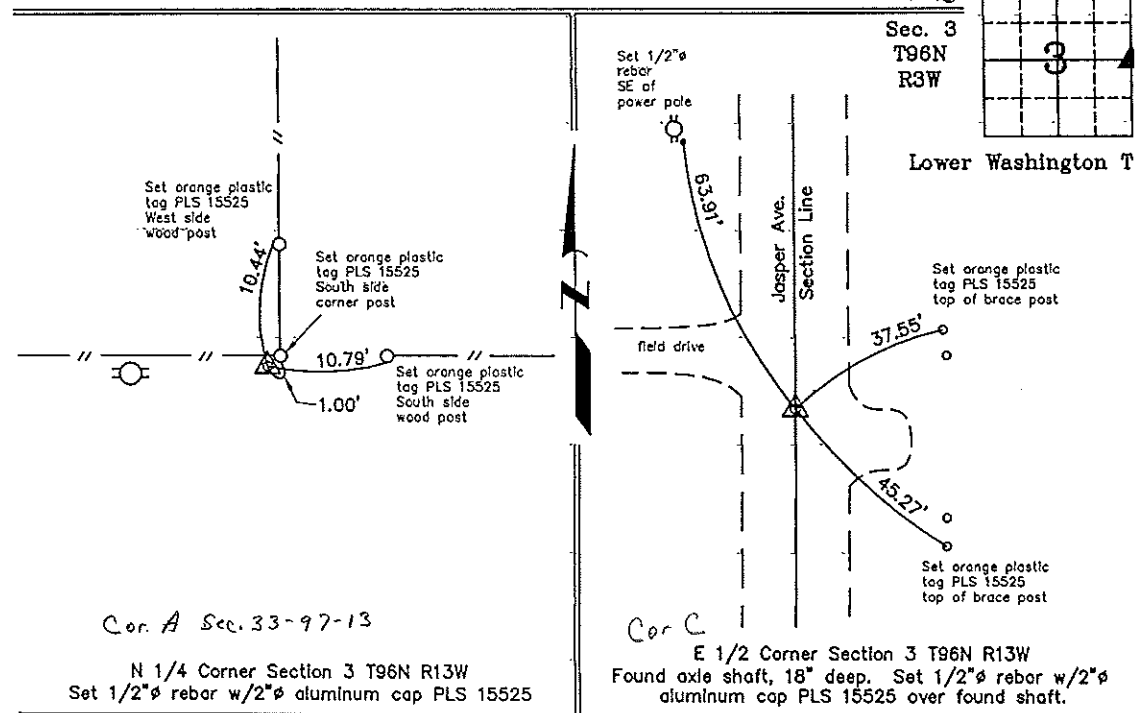
Monument Description and Remarks: N 1/4 Corner Section 3 T96N R13W: Set 1/2"Ø rebar w/2"Ø aluminum cap PLS 15525 at existing fence corner after comparing distance and bearing to the NE and NW Corners.

E 1/4 Corner Section 3 T96N R13W: Found axle shaft, 18" deep, with information obtained from the Chickasaw County Engineer's Office in Field Book Washington Twp. Corner Ties, Section 3, Corner 'C', and with information obtained from a Survey and Plat made by L.P. Erdman recorded in the Chickasaw County Recorder's Office July 7, 1977 in Deeds Book 114, Page 319. Set 1/2"Ø rebar w/2"Ø aluminum cap PLS 15525 over found axle shaft.

PLAN - VIEW

Project Number 03018.LS
FB. 46J PG. 62-65

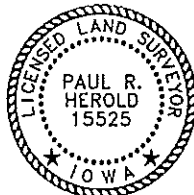
(Show a minimum of three reference ties to durable physical objects, relevant monuments and physical conditions that will enable recovery of the corner.)



Cor. A Sec. 33-97-13

N 1/4 Corner Section 3 T96N R13W
Set 1/2"Ø rebar w/2"Ø aluminum cap PLS 15525

Cor. C
E 1/2 Corner Section 3 T96N R13W
Found axle shaft, 18" deep. Set 1/2"Ø rebar w/2"Ø aluminum cap PLS 15525 over found shaft.



I hereby certify that this land surveying document was prepared and the related survey work was performed by me or under my direct personal supervision and that I am a duly licensed Land Surveyor under the laws of the State of Iowa.

Paul R. Harold 3-10-03
Paul R. Harold Date

License number 15525
My license renewal date is December 31, 2004.
Sheets covered by this seal: Individual

List Corners to be Indexed			
Corners	Section	Twp.	Range
N 1/4	3	96N	13W
E 1/4	3	96N	13W

Filed 3-12-03

X:\Section Corners\Sec. 0313-96-13co.dwg

County Engineer's
Mr.