

COPY

FILED 2003-0743  
RECORDER'S OFFICE  
CHICKASAW COUNTY, IOWA

2003 MAR 12 AM 9 12

CINDY MESSERSMITH  
COUNTY RECORDER

TeKIPPE ENGINEERING, P.C., 128 South Vine Street, West Union, Iowa 52175 Phone (563) 422-6131

UNITED STATES PUBLIC LAND SURVEY CORNER CERTIFICATE

OF

Land Survey Monuments situated in Section 3, Township 96 North, Range 13 West of the Fifth Principal Meridian, CHICKASAW County, Iowa.

Previously recorded in none in County Recorder's Office.  
(book, page, document number, etc.)

(Show reason for preparing this certificate, the evidence and detailed procedures used in establishing the corner positions and monumentation found or placed.)

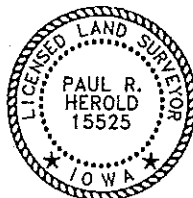
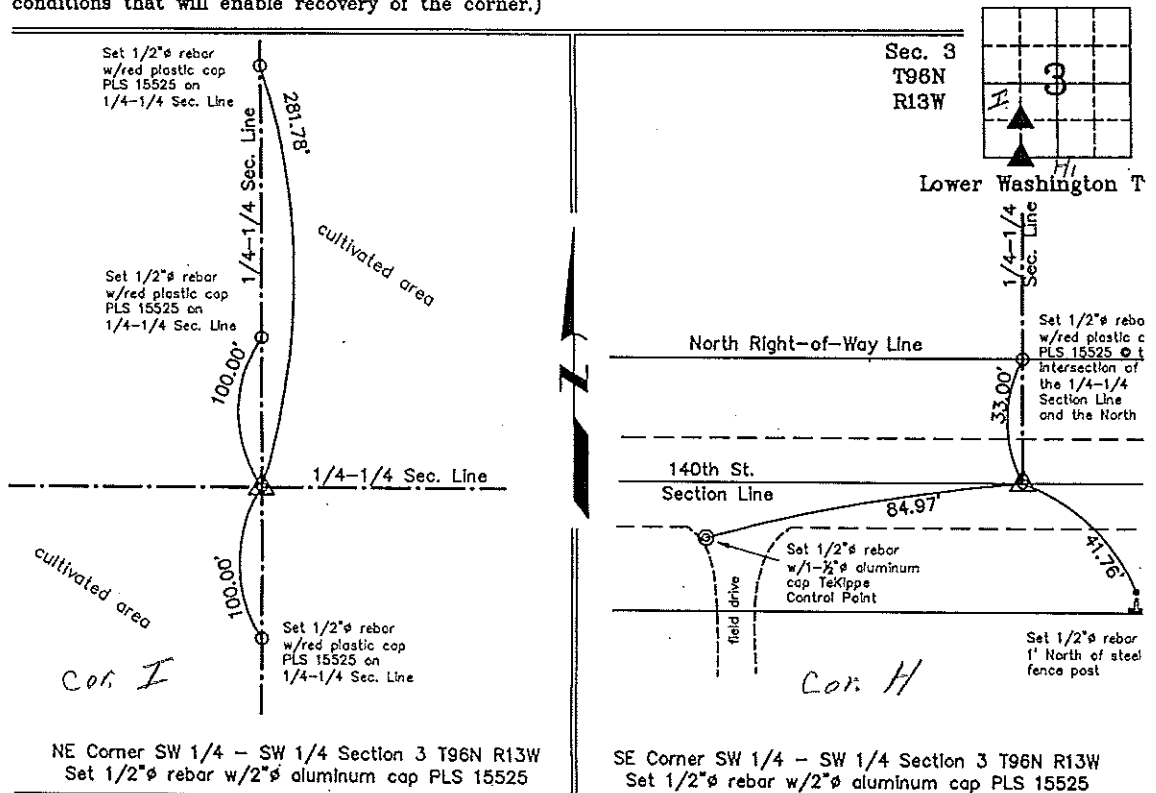
Monument Description and Remarks: NE Corner SW 1/4 - SW 1/4 Section 3 T96N R13W:  
Set 1/2"Ø rebar w/2"Ø aluminum cap PLS 15525 at the intersection of 1/4-1/4 Section  
Lines after the standard mathematical subdivision of the SW 1/4.

SE Corner SW 1/4 - SW 1/4 Section 3 T96N R13W: Set 1/2"Ø rebar w/2"Ø aluminum  
cap PLS 15525 equidistant and on line between the S 1/4 Corner and the SW Corner.

PLAN - VIEW

Project Number 03016.LS  
FB. 46J PG. 62-65

(Show a minimum of three reference ties to durable physical objects, relevant monuments and physical conditions that will enable recovery of the corner.)



I hereby certify that this land surveying document was prepared and the related survey work was performed by me or under my direct personal supervision and that I am a duly licensed Land Surveyor under the laws of the State of Iowa.

*Paul R. Herold* 3-10-03  
Paul R. Herold Date  
License number 15525  
My license renewal date is December 31, 2004.  
Sheets covered by this seal: Individual

List Corners to be Indexed			
Corners	Section	Twp.	Range
NE-SW-SW	3	96N	13W
SE-SW-SW	3	96N	13W

*Filed 3-12-03*

X:\Section Corners\Sec. 0313-96-13qv.dwg

*County Engineer's*  
*Paul*